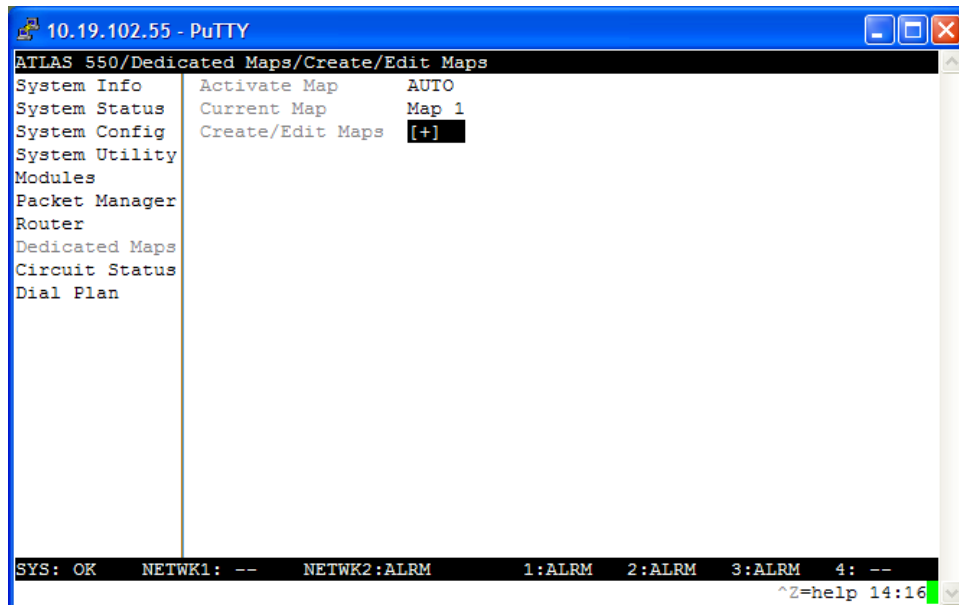


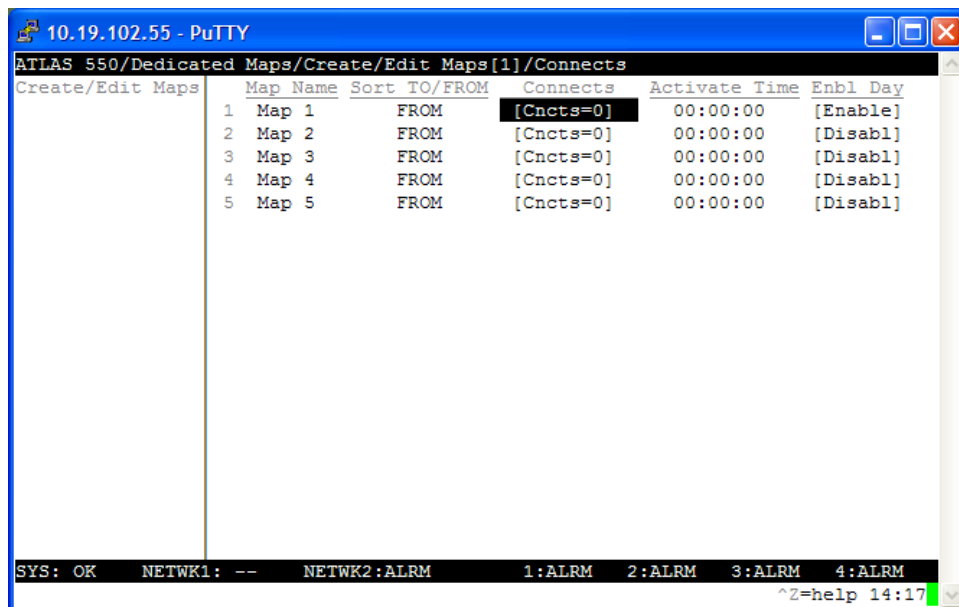
Configuring Dedicated Maps (for E&M) on the Atlas

The Atlas can map any DS0 from any port on any module to any DS0 on any other port on any other module. This is accomplished thru what is called a Dedicated Map. The most common applications are DACSing circuits and performing CSU/DSU multiplexing functionality. In this example, we will be configuring a dedicated map for some E&M ports in an Atlas 550.

1. From the **Dedicated Maps** menu, arrow over and down to **Create/Edit Maps** and hit **Enter**.

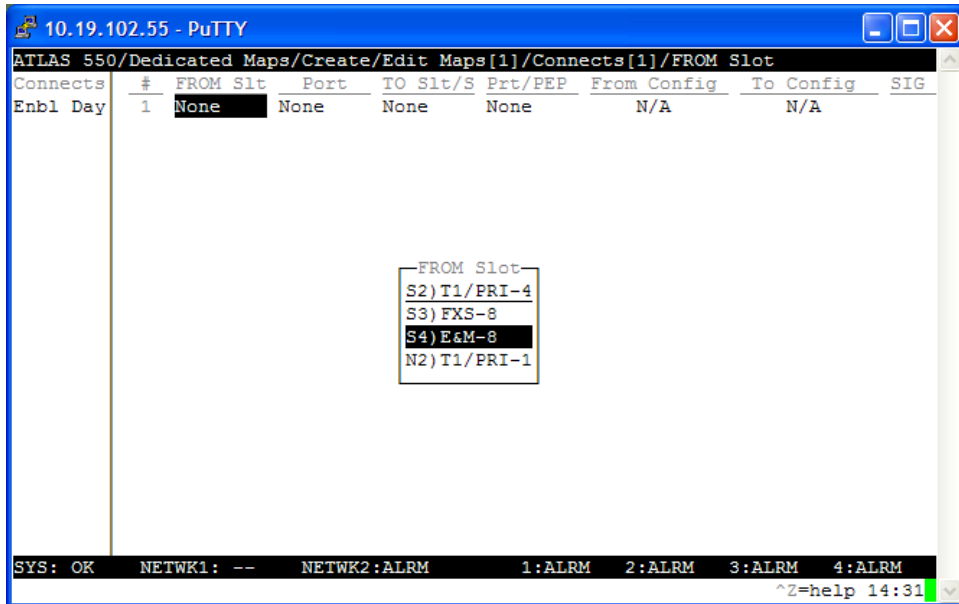


2. Arrow over to the **Connects** column for Map 1 and hit **Enter**.

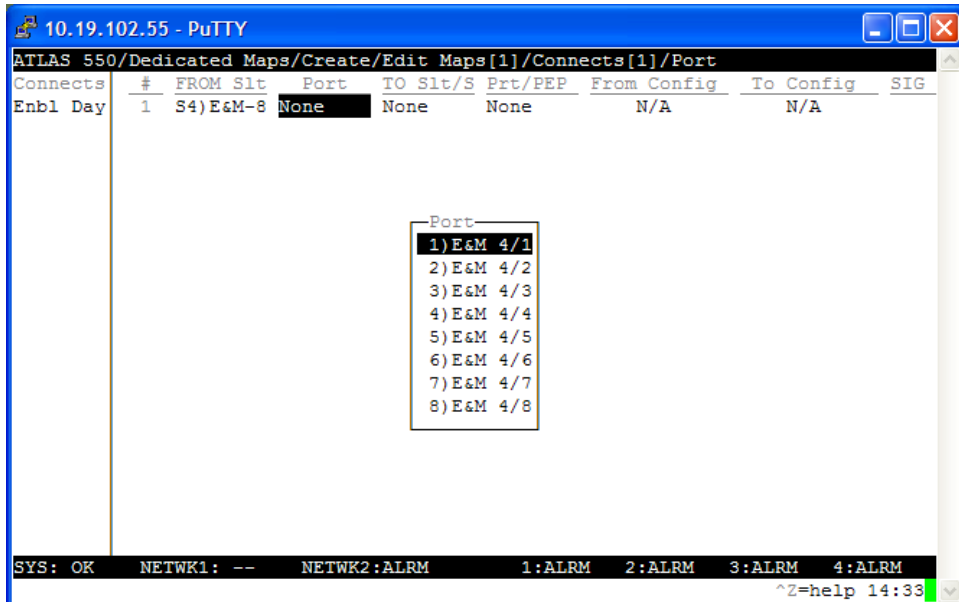


3. Arrow over to the right. This will create a new line.
4. Arrow over to the **FROM Slot** column and hit **Enter**. Now arrow down to select your E&M module and hit **Enter**.

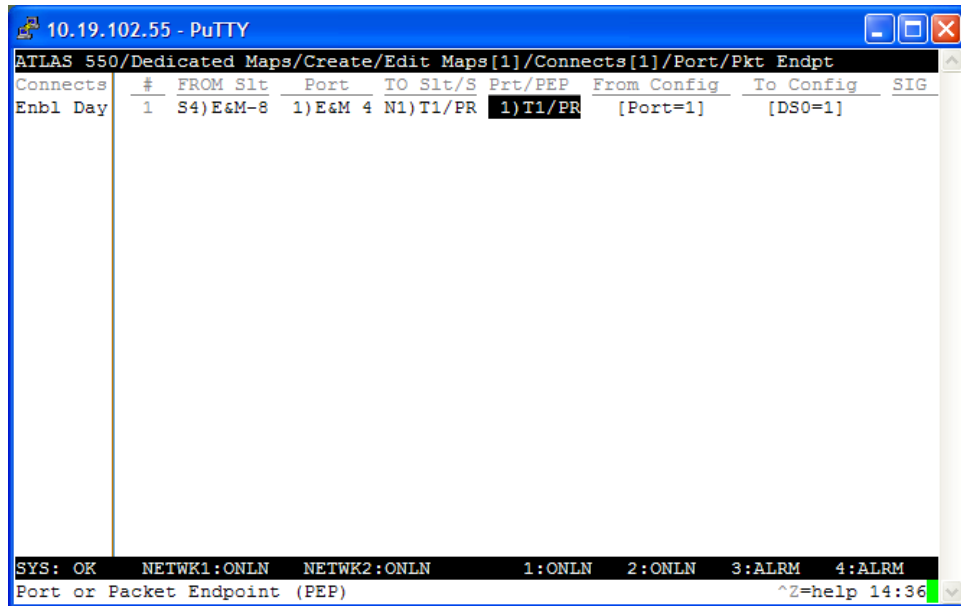
Note: You can only configure analog voice interfaces under the FROM Slot/Port field. Packet Endpoints and Packet Voice entries must be in the TO Slot/Port field.



5. In the same manner, select the E&M port you wish to map.

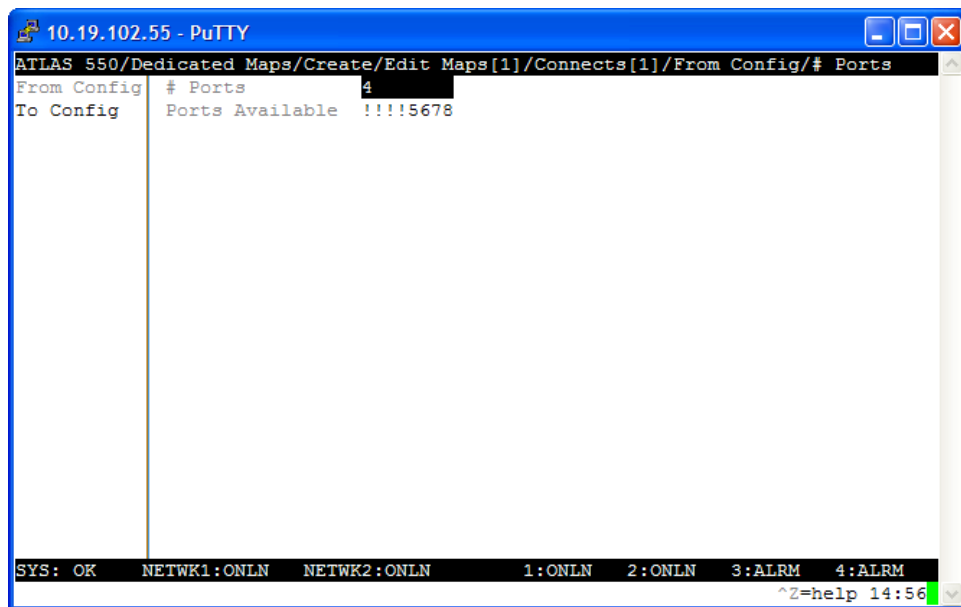


6. Next, you'll need to select the module and port in the **TO Slt/S** and **Prt/PEP** columns. In this example, we chose the T1/PRI module in Network 1 (N1).



7. Arrow over to the **From Config** column and hit **Enter**. This is where you will specify the number of ports you're mapping. If you're only doing one port to one DS0, you won't have to change anything. For this example, we're going to be mapping 4 ports. So, we arrow over to the **# Ports** field and hit **Enter**. Type a **4** and hit **Enter**. Note that the **Ports Available** field now shows that ports 1-4 are now being used. For more on that, arrow down one and use the Extended Help (Ctrl-A).

Note: There is a functional limit of 4 ports per map entry. However, for best performance, we recommend you configure no more than 2 ports per map entry.



8. Now arrow back to the **To Config** and you will notice that the **1st DS0** is set to 1. Note the *'s in the **DS0s Available** field. If you're using the first 4 DS0s for your E&M circuits, you won't need to change anything. If you need a different range, then you'll need to change the 1st DS0 accordingly.

```

10.19.102.55 - PuTTY
ATLAS 550/Dedicated Maps/Create/Edit Maps[1]/Connects[1]/To Config
From Config 1stDS0 1
To Config DS0s Available ****56789012345678901234
          T1 Trouble Code Service Off

SYS: OK  NETWK1:ONLN  NETWK2:ONLN  1:ONLN  2:ONLN  3:ALRM  4:ALRM
^Z=help 14:58
  
```

9. This completes the mapping configuration for 4 E&M ports to the first 4 DS0s on the T1 on the Network 1 Module. Remember that changes to your dedicated maps do not take effect until you back all the way out to the main menu.

```

10.19.102.55 - PuTTY
ATLAS 550/Dedicated Maps/Create/Edit Maps[1]/Connects[1]
Connects
Enbl Day
# FROM Slt Port TO Slt/S Prt/PEP From Config To Config SIG
1 S4)E&M-8 1)E&M 4 N1)T1/PR 1)T1/PR [Ports=1-4] [DS0=1]

SYS: OK  NETWK1:ALRM  NETWK2:ONLN  1:ONLN  2:ONLN  3:ALRM  4:ALRM
INS/DEL ^Z=help 15:05
  
```

If you have any questions, feel free to contact ADTRAN Technical Support by phone at 1-888-423-8726 or email support@adtran.com.