



# Octal BRI/U

## ATLAS 800 Series Module

### Product Features

- Eight Basic Rate ISDN U-Interfaces
- LT mode and NT mode support
- ANSI T1.601 compliant
- Compliant with Lucent 5ESS, Nortel DMS100, and National ISDN
- Near-end and Far-end block error monitoring
- Maximum distance of 18,000 feet
- Occupies a single slot in the ATLAS chassis
- Hot swappable
- Industry-leading five-year North American warranty

**The ADTRAN® ATLAS™ includes an advanced access architecture for switching dial-up calls to specific ports or DS0s.** The Octal Basic Rate ISDN (BRI) module contains eight ISDN U-Interfaces and combines with other ATLAS components to implement an ISDN access switch. The Octal BRI module can connect to the ISDN network (NT mode), or it can emulate the ISDN network to other ISDN access devices (LT mode) that support the U-Interface, such as terminal adapters and network termination units.

As a component in an ATLAS access switching application, the Octal BRI module can consolidate multiple Basic Rate ISDN (BRI) connections onto T1/PRI access lines. The module also supports BRI-to-BRI and BRI-to-PRI switching. In addition, ATLAS converts between ISDN D-Channel (PRI or BRI) and T1 robbed bit signaling, allowing non-ISDN equipment to access a more efficient PRI or

BRI facility. Moreover, the module's call filtering feature allows you to program on a per-user basis, the call types that will be answered and originated.

Single B-Channel ISDN calls can be directed to synchronous V.35 ports operating at 56 kbps or 64 kbps. For asynchronous applications, ISDN calls can be routed to EIA-232 ports on the Async-232 module.

The Octal BRI module can be configured through a variety of mechanisms, including Telnet or VT100 emulation. SNMP management is supported for alarm and event reporting.

The Octal BRI module includes an extensive array of diagnostic tools to assist in identifying and correcting network problems including a built-in Self-Test utility, local and remote loopback testing for B1, B2, and 2B+D, and performance monitoring to ensure the quality of the ISDN line.



ADTRAN, Inc.

Attn: Enterprise Networks  
901 Explorer Boulevard  
Huntsville, AL 35806

P.O. Box 140000  
Huntsville, AL 35814-4000

256 963-8000 voice  
256 963-8699 fax  
256 963-8200 fax back

**General Information**  
800 9ADTRAN  
info@adtran.com  
www.adtran.com

**Pre-Sales  
Technical Support**

800 615-1176 toll-free  
application.engineer@adtran.com  
www.adtran.com/support

**Where to Buy**  
877 280-8416 toll-free  
channel.sales@adtran.com  
www.adtran.com/where2buy

**Post-Sales  
Technical Support**

888 423-8726  
support@adtran.com  
www.adtran.com/support

**ACES Installation &  
Maintenance Service**

888 874-ACES  
aces@adtran.com  
www.adtran.com/support

**International Inquiries**

256 963 8000 voice  
256 963-6300 fax  
international@adtran.com  
www.adtran.com/international

**For the regional office  
nearest you, visit:**

www.adtran.com/where2buy



ADTRAN is an  
ISO 9001: 2000 certified supplier.



ADTRAN is a  
TL 9000 3.0 certified supplier.

61200186L2-8C June 2006  
Copyright © 2004 ADTRAN, Inc.  
All rights reserved.

# Octal BRI/U

## ATLAS™ 800 Series Module

### Product Specifications

#### ISDN Interface

- ANSI T1.601-1992 2B1Q U-Interface

#### Physical Interface

- 8-Pin Modular RJ45

#### BRI Line Rate

- 2B+D, 160 kbps full duplex

#### U-Interface Distance

- 18,000 feet with 1,300 ohm resistance design

#### Switch Compatibility

- Lucent 5ESS, Nortel DMS-100, National ISDN

#### Termination Modes

- LT (Network Emulation)
- NT (DCE)

#### Diagnostics

- Self-test
- B1, B2, & 2B+D Local and Remote Loopbacks

#### Performance Monitoring

- Near-End Block Errors (NEBES),  
& Far-End Block Errors (FEBES)

#### Agency Approvals

- FCC Part 15, Class A, FCC Part 68, UL,  
Canadian UL (CUL), Industry Canada CS-03

#### Environment

- **Operating:** 0 to 45°C (32 to 113°F)
- **Storage:** -20 to 70°C (-4 to 158°F)
- **Relative Humidity:** Up to 95%, non-condensing

#### Power

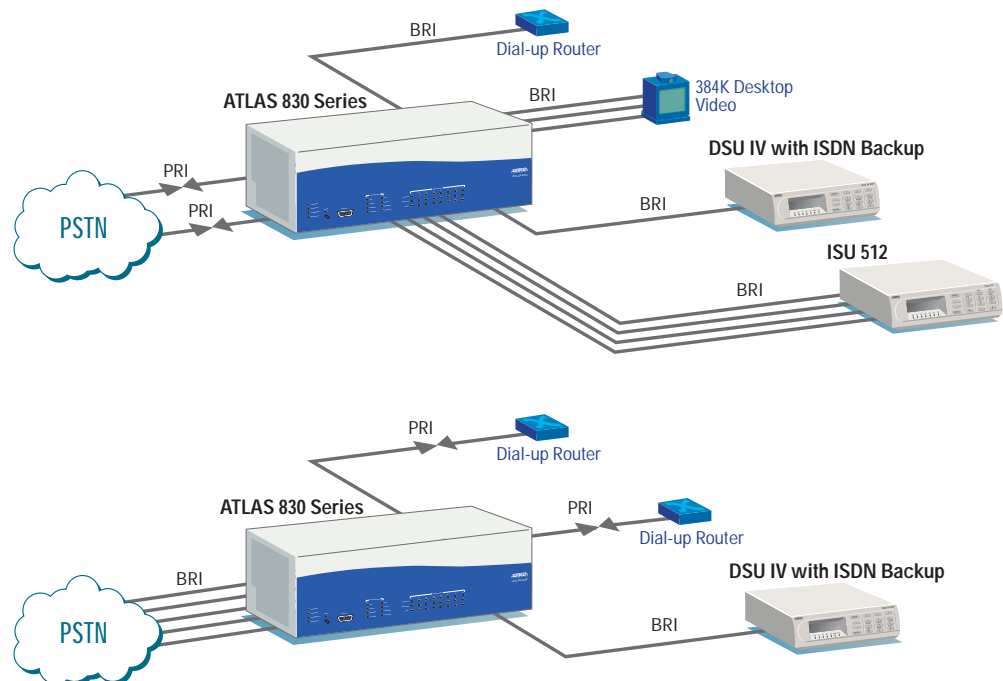
- 7.5 Watts

#### Product Includes

- Eight RJ45 to RJ11 Cables (7 feet)
- User Manual

### Ordering Information

Equipment	Part #
Octal BRI/U Module	1200186L2



Specifications subject to change without notice. ATLAS is a trademark of ADTRAN, Inc. ADTRAN is a registered trademark of ADTRAN, Inc. All registered trademarks and trademarks mentioned in this publication are the property of their respective owners.