



HDLC

ATLAS 800^{PLUS} and ATLAS 890 Option Module

Product Features

- 128 HDLC controllers
- 8.192 Mbps total bandwidth
- Typically used in large public and private frame relay networks
- Required for PRI over T3 applications in the ATLAS 800^{PLUS}
- Flash upgradable
- Hot swappable
- Industry-leading five-year North American warranty

Certain ADTRAN® ATLAS™ 800^{PLUS} and ATLAS 890 applications require a large number of High-level Data Link Control (HDLC) controllers. When an application requires more HDLC controllers than what is being provided by the ATLAS chassis, the HDLC module is used to add 128 HDLC controllers. The application determines whether an HDLC Module is necessary. An HDLC controller is required to process any of the following:

A Frame Relay Link: Every Frame Relay link in an ATLAS 800^{PLUS} requires one HDLC controller. For example, a single T1 connection to the public Frame Relay network requires one HDLC controller. In a private Frame Relay network, each DS0 in a T1 may represent a single Frame Relay link, in which case twenty-four HDLC controllers would be required.

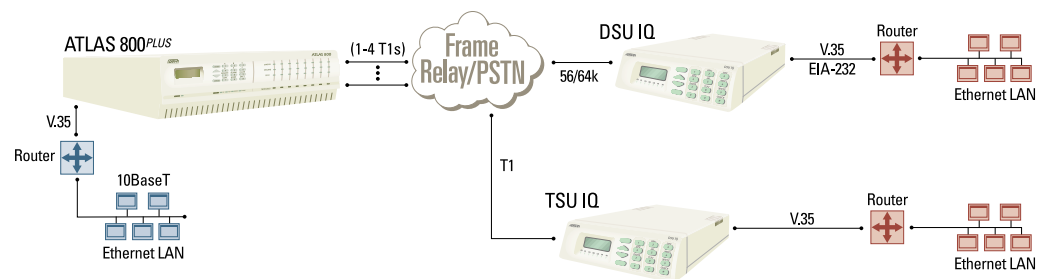
Note: Frame Relay links can be found on the DTE interface as well as the network inter-

face. If the ATLAS 800^{PLUS} is passing Frame Relay out individual V.35 ports, then each of these V.35 ports is counted as a Frame Relay link and requires an HDLC controller.

An ISDN B Channel: Only used if the call is processed by the ATLAS 800^{PLUS}, as in the case of remote access applications. For remote access applications, one HDLC controller is required for every B channel call that is terminated by ATLAS.

When the ATLAS 800^{PLUS} does not terminate the ISDN calls (for example, a PRI-to-T1 conversion), HDLC controllers are not needed for the B channels, just for the D channel.

Note: ISDN calls that are directed to synchronous V.35 ports at 56 or 64 kbps do not require HDLC processing of the B channels.





ADTRAN, Inc.

Attn: Enterprise Networks
901 Explorer Boulevard
Huntsville, AL 35806

P.O. Box 140000
Huntsville, AL 35814-4000

256 963-8000 voice
256 963-8699 fax
256 963-8200 fax back

General Information

800 9ADTRAN
info@adtran.com
www.adtran.com

Pre-Sales

Technical Support

800 615-1176 toll-free
application.engineer@adtran.com
www.adtran.com/support

Where to Buy

877 280-8416 toll-free
channel.sales@adtran.com
www.adtran.com/where2buy

Post-Sales

Technical Support

888 423-8726
support@adtran.com
www.adtran.com/support

ACES Installation & Maintenance Service

888 874-ACES
aces@adtran.com
www.adtran.com/support

International Inquiries

256 963 8000 voice
256 963-6300 fax
international@adtran.com
www.adtran.com/international

For the regional office nearest you, visit:

www.adtran.com/where2buy



ADTRAN is an ISO 9000: 2000 certified supplier.



ADTRAN is a TL 9000 3.0 certified supplier.

61200222L1-8C November 2001
Copyright © 2004 ADTRAN, Inc.
All rights reserved.

HDLC

ATLAS 800^{PLUS} and ATLAS 890 Option Module

Product Specifications

Capacity

HDLC Controllers

- 128

Total Bandwidth

- 8.192 Mbps

Agency Approvals

- FCC Part 15, Class A
- UL 1950 and Canadian UL (CUL)

Environment

Operating

- 0° to 45° C (32° to 113° F)

Storage

- -20° to 70° C (-4° to 158° F)

Relative Humidity

- Up to 95%, non-condensing

Power

- 11 Watts

Product Includes

- User Manual

Compatibility

- Requires ATLAS 800^{PLUS} or ATLAS 890 base unit

Ordering Information

Equipment	Part #
HDLC Module	1200222L1

Specifications subject to change without notice. ATLAS is a trademark of ADTRAN, Inc. ADTRAN is a registered trademark of ADTRAN, Inc. All registered trademarks and trademarks mentioned in this publication are the property of their respective owners.