



Modem-24

ATLAS 830 and ATLAS 890 Module

Product Features

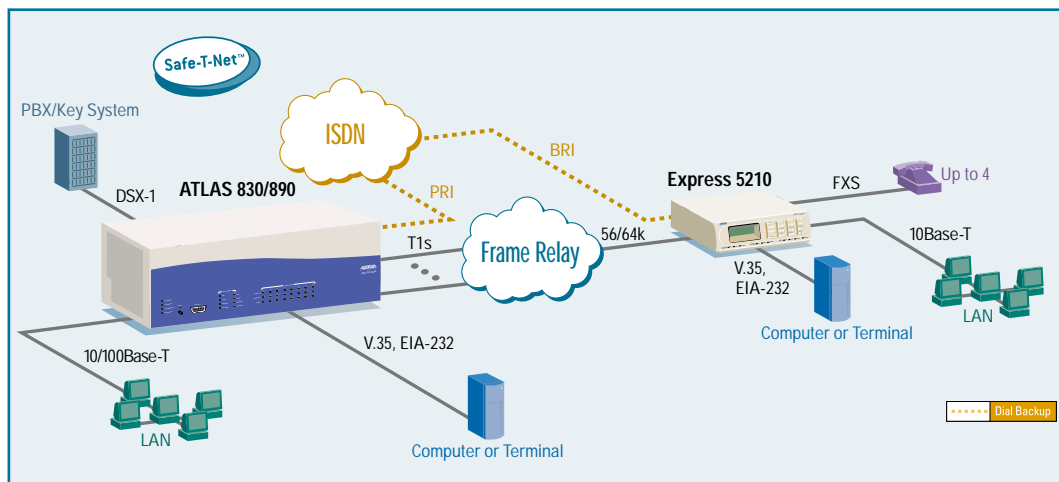
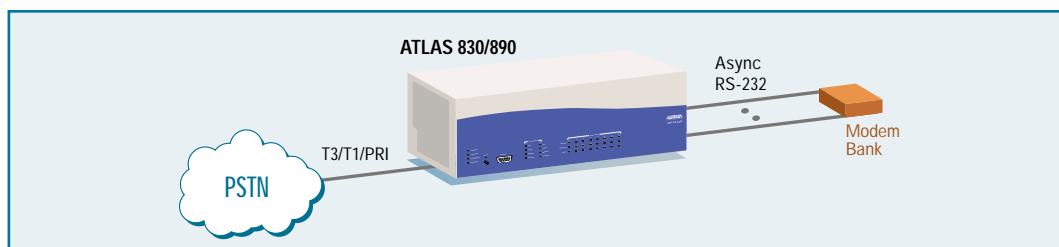
- Supports twenty four V.90 or 56k modem calls and sixteen ISDN calls
- V.90 and K56flex™ compatible modems
- Flash upgradable
- Occupies a single slot in the ATLAS 830 and ATLAS 890 chassis
- Async-232 Module provides physical interfaces
- Hot-swappable
- Industry-leading five-year North American warranty

The ADTRAN® Modem-24 module is a high-capacity card for the ATLAS™ 830 and ATLAS 890 Integrated Access Systems, capable of simultaneously processing 24 V.90 modem calls and 16 ISDN B-channel calls.

Modem or ISDN calls are presented to ATLAS 830 and ATLAS 890 via one or more Primary Rate ISDN (PRI), Basic Rate ISDN (BRI), or T1 circuits. The Modem-24 module combines With the Async-232 Module to enable dial-up access for up to forty-eight users in a single chassis.

The Modem-24 module can be configured through a variety of mechanisms, including Telnet or VT100 emulation. SNMP management is supported for alarm and event reporting.

The Modem-24 module expands ATLAS 830 and ATLAS 890 to integrate remote access with the dedicated bandwidth management and switched access functions already supported.





ADTRAN, Inc.

Attn: Enterprise Networks
901 Explorer Boulevard
Huntsville, AL 35806

P.O. Box 140000
Huntsville, AL 35814-4000

256 963-8000 voice
256 963-8699 fax
256 963-8200 fax back

General Information
800 9ADTRAN
info@adtran.com
www.adtran.com

**Pre-Sales
Technical Support**
800 615-1176 toll-free
application.engineer@adtran.com
www.adtran.com/support

Where to Buy
877 280-8416 toll-free
channel.sales@adtran.com
www.adtran.com/where2buy

**Post-Sales
Technical Support**
888 423-8726
support@adtran.com
www.adtran.com/support

**ACES Installation &
Maintenance Service**
888 874-ACES
aces@adtran.com
www.adtran.com/support

International Inquiries
256 963 8000 voice
256 963-6300 fax
international@adtran.com
www.adtran.com/international

**For the regional office
nearest you, visit:**
www.adtran.com/where2buy



ADTRAN is an
ISO 9001: 2000 certified supplier.



ADTRAN is a
TL 9000 3.0 certified supplier.

61200181L1-8G January 2004
Copyright © 2004 ADTRAN, Inc.
All rights reserved.

Modem-24

ATLAS 830 and ATLAS 890 Module

Product Specifications

Modulation Support

- V.90, K56flex (56 kbps), V.34 bis, V.34, V.32 bis, V.32, V.22 bis, V.22, V.21, Bell 212, Bell 103

Digital Call Support

- 56 kbps, 64 kbps

Error Correction

- MNP 1-4, V.42

Data Compression

- MNP 5, V.42 bis

Agency Approvals

- FCC Part 15, Class A, UL, and Canadian UL (CUL)

Power

- 15 Watts

Environment

Operating Temperature

- 0° to 45°C, (32° to 113°F)

Storage Temperature

- -20° to 70°C, (-4° to 158°F)

Relative Humidity

- Up to 95%, non-condensing

Product Includes

- User manual

Ordering Information

Equipment	Part #
Modem-24 Module	1200782L1
Async-232 Module	1200182L1



The image above shows an ATLAS 850 configured with both the Modem-24 module and the Async-232 module.

Specifications subject to change without notice. ATLAS and Safe-T Net are trademarks of ADTRAN, Inc. ADTRAN is a registered trademark of ADTRAN, Inc. All registered trademarks and trademarks mentioned in this publication are the property of their respective owners.