

# DSU III DBU

DEDICATED DSU/CSU WITH SWITCHED BACKUP



Automatically converts to switched mode upon failure of dedicated service

Stand alone or SMART 16 shelf-mount DDS versions

Four backup options available:  
4-wire SW56, 2-wire SW56,  
V.32 bis/V.42 bis, and 1B+D ISDN

Synchronous or asynchronous  
(including 57.6 kbps) modes  
of operation

Both EIA-232C and V.35  
DTE interfaces

DTE-to-service rate matching feature,  
allows slower DTE devices to  
communicate over higher rate  
service offerings

Supports tail circuit operation with  
internal slack data buffer

Manual and automatic dialing  
capability

Auto answer of incoming calls

Standard 5 year warranty

The ADTRAN DSU III DBU, a high-performance Data/Channel Service Unit (DSU/CSU), provides an interface between the Digital Data Service (DDS) and the customer's Data Terminal Equipment (DTE) while providing automatic switched backup of the dedicated circuit. There are four backup options: 4-wire Switched 56, 2-wire Switched 56, V.32 bis/V.42 bis, and 1B+D ISDN. When the DSU III DBU is configured for dedicated service with switched backup, the user may select options to qualify a dedicated line failure. Upon line failure recognition, the DSU initiates connection to the remote unit over the switched network. The unit can automatically or manually revert to the restored DDS circuit.

The DSU III DBU supports synchronous operations at rates of 2.4, 4.8, 9.6, 19.2, 38.4, and 56 kbps and asynchronous data rates of 2.4 to 19.2 kbps and 57.6 kbps. The DTE interface can be selected as either EIA-232 or V.35 for all data rates. Another feature is DTE-to-service rate matching, for dedicated and switched backup modes, that allows slower rate DTE equipment to communicate over a higher speed digital line. In the dial backup mode, dialing may be accomplished automatically (with stored numbers) or manually.

The unit responds to standard loopback commands from the telephone company central office. The front panel displays the built-in test results including V.54 remote loopback, with 2047 and 511 BERT test patterns, and DDS stress patterns 1-4. Automatic service rate detection and pair reversal detection aid installation.

The front panel also has a two-line by 16-character LCD display, full numeric keypad, and seven LEDs. The shelf-mount versions may be configured using the SMART 16 shelf controller card with a locally or remotely attached VT 100 terminal or by using a DATAMATE. The stand alone and SMART 16 units can be configured using "AT" or V.25 bis commands.

**ADTRAN**



### CORPORATE OFFICE

901 Explorer Boulevard  
Huntsville, Alabama 35806  
(800) 827-0807  
Local (205) 971-8000  
Fax (205) 971-8699

### SALES OFFICES

Pasadena, CA  
(800) 788-5408  
Local (818) 577-5400

Denver, CO  
(303) 220-4777

Atlanta, GA  
(800) 332-6945  
Local (404) 806-9788

Chicago, IL  
(708) 851-6699

Kansas City, MO  
(913) 663-3939

St. Louis, MO  
(314) 256-4433

New York, NY  
(203) 261-3554

Philadelphia, PA  
(610) 559-6000

Dallas, TX  
(214) 869-7699

Washington D.C.  
(703) 777-3037

Canada  
(416) 805-9937

### ORDERING INFORMATION

Equipment	Part Number
DSU III DBU (4-wire)	1200125L1
DSU III DBU RM (4-wire)	1200125L2
DSU III DBU (V.32 bis)	1200125L3
DSU III DBU (2-wire)	1200125L4
DSU III DBU RM (2-wire)	1200125L4
DSU III DBU (ISDN)	1200125L4
DSU III DBU RM (ISDN)	1200125L4



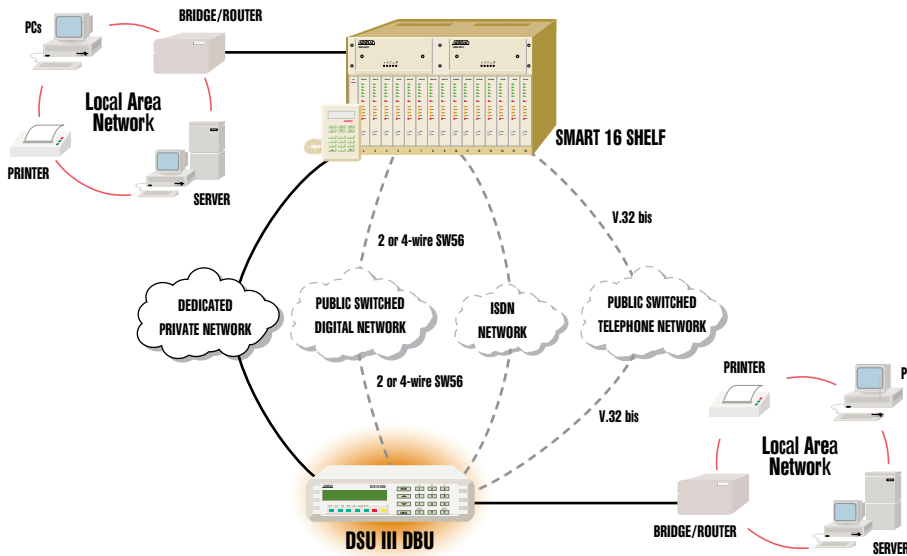
ADTRAN is an ISO 9001 registered company.

61202.013L2-8H  
May 1995

Specs subject to change without notice  
Printed in U.S.A.



Printed on recycled paper  
©ADTRAN, Inc. 1995



## SPECIFICATIONS

### OPERATING MODES

Dedicated DDS  
Dedicated DDS with automatic switched-backup

**SWITCHED BACKUP**  
Automatic or Manual  
4-wire SW 56  
2-wire SW 56  
V.32 bis/V.42 bis  
ISDN (1B+D)

### DTE RATES PROVIDED

DTE rates match service rates

DTE-to-Loop rate matching in both dedicated and switched backup modes

**SYNCHRONOUS RATES**  
2.4, 4.8, 9.6, 19.2, 38.4, and 56 kbps

**ASYNCHRONOUS RATES**  
2.4, 4.8, 9.6, 19.2, and 57.6 kbps

### DTE INTERFACES PROVIDED

Both EIA-232 and V.35 electrical and physical DTE Interfaces

### LINE REQUIREMENTS

**LOOP TRANSMISSION PARAMETERS**  
as defined in:

AT&T PUB 62310: Dedicated DDS  
AT&T PUB 41468: Switched 56  
SPRINT TS 0046: Switched 56  
Receiver Sensitivity -45dB @ all rates

**LINE INTERFACE**  
RJ-48S, 4-wire, full duplex

### ENVIRONMENT

**OPERATING**  
0°C to 50°C (32°F to 122°F)

**STORAGE**  
-20°C to 70°C (-4°F to 158°F)

**RELATIVE HUMIDITY**  
Up to 95%, non-condensing

### FCC APPROVAL

FCC part 15, Class A and Part 68

### PHYSICAL

**DIMENSIONS**  
Stand alone: 2.25" H, 8.75" W, 10.25" D  
Rackmount: 1.00" H, 6.75" W, 10.5" D

**WEIGHT**  
Stand alone: 3 lbs  
Rackmount: 1.5 lbs

**POWER**  
Stand alone: 115 VAC, 60 Hz, 8 Watts

**PACKAGING**  
Stand-alone  
Rackmount

### DIAGNOSTICS

**NETWORK**  
CSU and DSU loopbacks

**USER**  
Local DTE and Loop, Remote V.54

**TEST PATTERNS**  
2047, 511, DDS, Stress Patterns 1-4