



Express L1.5

HDSL Campus Connectivity

Product Features

- HDSL remote access at 1.5 Mbps
- RFC 1490 Frame Relay encapsulation for virtual dedicated access
- IP and IPX routing
- Concurrent bridging
- Internet and central site LAN access via Frame Relay
- Campus connectivity
- Frame Relay or PPP mode
- Six levels of security
- NIC/HUB switch eliminates need for cross-over cables
- SNMP management
- Extensive logs provide operational feedback
- PAP, CHAP, EAP, Radius, Caller-ID, password protection
- Five-year warranty

The ADTRAN Express L1.5 is an HDSL bridge/router that connects LAN segments or provides remote access to a computer or network over two twisted pairs of copper.

The ADTRAN Express L1.5 is designed to work back-to-back as a cost-effective LAN extension device.

The Express L1.5 provides a cost-effective campus connectivity solution. When used in a leased copper setting, the Express L1.5 delivers 1.536 Mbps bi-directionally over two twisted pairs of copper. The Express L1.5 is also capable of transmitting at sub-rates ranging from 128 kbps to 1.536 Mbps. This solution can be used to extend a LAN or provide remote access to a single user or LAN segment. When used in the sub-rate mode, the Express L1.5 can be used with a single pair of twisted copper.

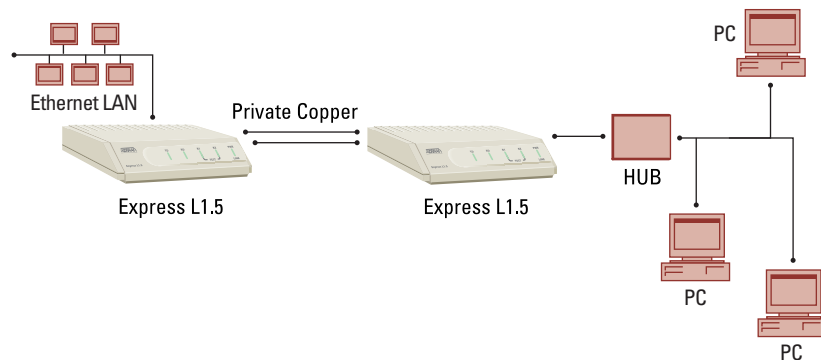
Six levels of security in the Express L1.5 provide a wide selection of security options. Network Address Translation (NAT) allows a

single IP address to be downloaded through Dynamic Host Configuration Protocol (DHCP) to the Express L1.5. Up to ten users can have a private IP network address downloaded from the L1.5.

The Express L1.5 can route IP and IPX packets and bridge all other protocols. Routing and bridging can be performed independently or concurrently. The Express L1.5 can operate in the Frame Relay mode providing up to ten PVCs or in a PPP mode over the LAN.

Five LEDs provide constant feedback about the L1.5's operation. A unique slide switch on the rear panel eliminates the need for separate cables when connecting to a HUB or NIC card. Extensive logs are provided to monitor the operation of the Express L1.5.

Telnet, SNMP, and a serial EIA-232 port provide multiple methods of configuration and management.





ADTRAN, Inc.

Attn: Enterprise Networks
901 Explorer Boulevard
Huntsville, AL 35806

P.O. Box 140000
Huntsville, AL 35814-4000

256 963-8000 voice
256 963-8699 fax
256 963-8200 fax back

General Information
800 9ADTRAN
info@adtran.com
www.adtran.com

**Pre-Sales
Technical Support**

800 615-1176 toll-free
application.engineer@adtran.com
www.adtran.com/support

Where to Buy
877 280-8416 toll-free
channel.sales@adtran.com
www.adtran.com/where2buy

**Post-Sales
Technical Support**
888 423-8726
support@adtran.com
www.adtran.com/support

**ACES Installation &
Maintenance Service**
888 874-ACES
aces@adtran.com
www.adtran.com/support

International Inquiries
256 963 8000 voice
256 963-6300 fax
international@adtran.com
www.adtran.com/international

**For the regional office
nearest you, visit:**
www.adtran.com/where2buy



Printed in the U.S.A.
61202192L2-8B June 2002
©2002 ADTRAN, Inc. All rights reserved.

Express L1.5

HDSL Campus Connectivity Product Specifications

Network Interface

- RJ-45 for ISDN Basic Rate HDSL 1.5 Mbps

LAN Interface

- Ethernet 10 Base-T (RJ-45)
- IEEE 802.3

Routing and Bridging

- IP Routing
- IPX Routing
- IEEE 802.1D MAC Bridging and Spanning Tree Filtering Capabilities

Protocols

IP

- TCP, RIP V1 and V2, UDP, ICMP, DHCP, ARP, UDP Relay, SYSLOG

IPX

- IPX, RIP, SAP

PPP

- LCP, IPCP, BCP, IPXCP

Network Address Translation

- DHCP for IP address assignment

Frame Relay

- RFC 1490 Frame Relay Encapsulation

Packet Filtering

- Pattern, IP, IPX, Bridge

Security

- PAP, CHAP, EAP, Radius, Caller-ID, Password Protection

Configuration

- VT100 terminal interface
- **Local:** EIA-232 interface
- **Remote:** Telnet or SNMP MIB-II, Enterprise MIB

Diagnostics and Maintenance

- Loopbacks
- Ping Utility
- FLASH Upgradable— Local and Remote
- Telnet Client and Server
- TFTP Client and Server
- DHCP/Boot Server, SNMP V1 MIB II, Enterprise MIB, TRAPS
- Performance Logs

Physical

Size

- 1.5" H, 6.25" D, 9" W

Weight

- 9.5 ounces

Power

- 115 vAC, 60Hz, 8W

Environmental

Operating Temperature

- 0° C to 50° C
- 32° F to 122° F

Storage Temperature

- -20° C to 70° C
- -4° F to 158° F

Relative Humidity

- Up to 95% non-condensing

Product Includes

- Express L1.5
- 110 V Wall Mount Power Supply
- 6-Foot CAT-5 10Base-T Cable
- 6-Foot RJ-45 Cable
- ADTRAN Utility Software
- User Manual

Ordering Information

Equipment	Part #
Express L1.5, data only	1202192L2



Express L1.5 Back

Specifications subject to change without notice. All registered trademarks and trademarks mentioned in this publication are the property of their respective owners.