

# Express L128T

## ISDN Remote Access Device

### Product Features

- ISDN Remote Access featuring IP and IPX Routing and Bridging
- Dial up the Internet, ISDN terminal adapters, and popular central site LAN access servers
- Data transfers up to 128 kbps without compression
- hi/fn<sup>®</sup> (formerly Stac<sup>®</sup>) LZS<sup>™</sup> Compression achieves even higher data rates
- Express L128T provides two analog phone ports for your telephone, FAX, or modem
- L128T supports custom calling features (not supported in all countries)
- Network Address Translation translates private network addresses to the Internet
- 2x64 dialing allows routing to separate locations at the same time
- Standard five-year warranty

The ADTRAN Express L128T is an ISDN remote access device featuring IP/IPX routing and bridging. An Ethernet connection provides networking for multiple computers over one Basic Rate ISDN line. For low-cost, high-speed remote connectivity to corporate networks, the L128T is designed for telecommuting, SOHO, and Internet access applications. The L128T provides two analog phone ports for connecting a telephone, FAX, or analog modem.

The Express L128T provides routing for IP and IPX packets and bridging for other LAN protocols and can perform these functions concurrently and individually. Extensive filtering capabilities allow for controlling bridged traffic, conserving bandwidth, and securing the local LAN. Dial-on-demand allows connections to automatically be established and disconnected based on thresholds and user demand.

With its ethernet interface, the Express L128T provides high-speed connectivity that outperforms lower speed EIA-232 devices, such as traditional analog modems and terminal adapters. The combination of ISDN and Multilink PPP provides superior

performance at 128 kbps. For even higher data rates, the unit supports hi/fn<sup>®</sup> (formerly STAC<sup>®</sup>) LZS<sup>™</sup> compression as a standard feature. Additionally, the Express L128T compression operates with the Ascend<sup>®</sup> compression used by many Internet service providers.

IP addresses come at a premium. The Express L128T uses Network Address Translation to help conserve IP addresses. Network Address Translation allows the Express L128T to simultaneously translate small private network addresses to a single IP address which is dynamically assigned.

IDSL applications such as Frame Relay over ISDN are tailor-made for the Express L128T. When used with ADTRAN FramePort 144 products at a central site, the Express L128T provides a powerful cost-effective IDSL/Frame Relay solution at 128 kbps or 144 kbps.

In dial mode, the Express L128T is capable of dialing the entire bandwidth to a single location or to two separate locations simultaneously, giving each destination 64 kbps of bandwidth.

*(Continued next page.)*

## ISDN Remote Access Device

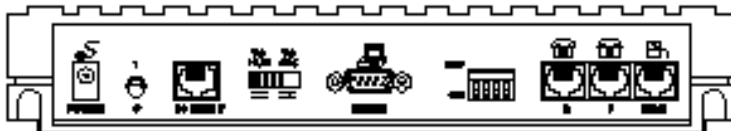
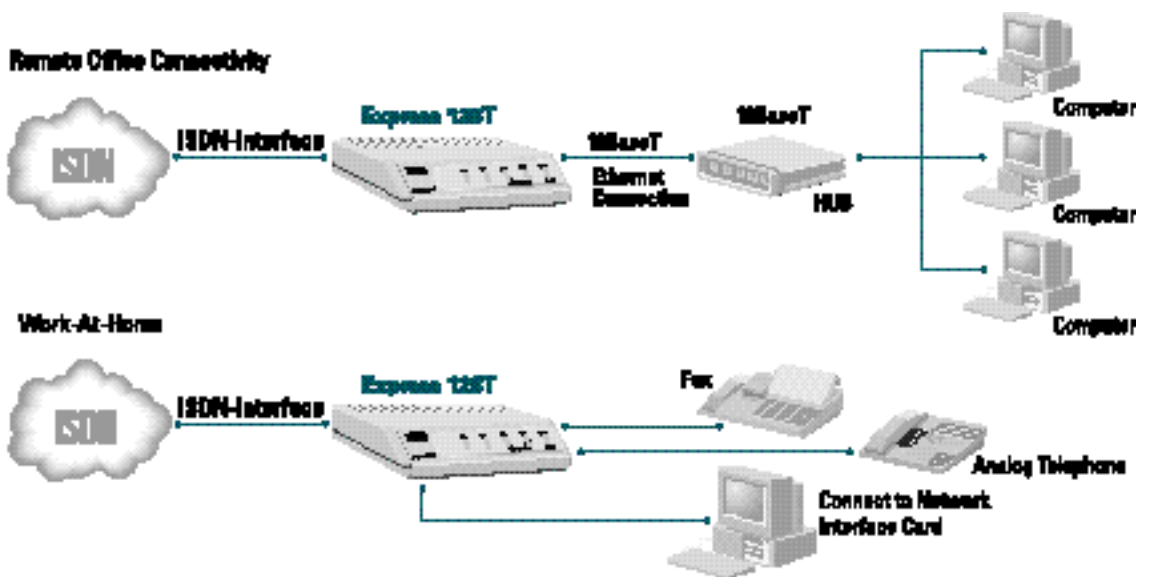
For telecommuting applications, the Express L128T provides two analog phone ports for connecting your telephone, FAX machine, or analog modem in addition to the ethernet connection for data transmissions. Over one ISDN line, you can talk on the phone and transmit data simultaneously. When transmitting data at a maximum throughput over both B channels, the Express L128T automatically detects calls on the analog port. Upon detection, the unit adjusts the speed of the data call to one B channel and accepts the analog/voice call on the other. Upon completion of the analog/voice call, the Express L128T automatically resumes data transfer over both B channels. It also supports

custom calling features provided by your telephone company, such as call waiting, call forwarding, hold, transfer and conference calling (not supported in all countries).

You can configure the unit with AdVision, or any VT 100 terminal emulation package, and an easy to use VT 100 menu system accessed through a EIA-232 maintenance port. Telnet sessions over the LAN or WAN interface provide an additional means of configuration. The Express L128T addresses the need for network security by supporting server and client password protection, PAP, CHAP and EAP. In addition, the Express L128T supports SNMP management using MIB II over the LAN and WAN interfaces.

### Application Examples

*Remote office connectivity and work-at-home with the Express 128T*



**Express L128T**  
Back panel

## Product Specifications

### Network Interface

- RJ-45 for ISDN Basic Rate ST-interface 128,000 bps

### Dial Modes

- **Dial:** 128,000 bps, 2 x 64,000 bps

### Leased Modes

- 128,000 bps, 2 x 64,000 bps

### ISDN Standards

- AT&T 5ESS®, VN3, ITR6, TPH1962, NTT, KDD, Euro-ISDN, NEC, TDX10, TDX1B

### LAN Interface

- Ethernet 10BaseT (RJ-45)
- IEEE 802.3

### Routing and Bridging

- IP Routing
- IPX Routing
- IEEE 802.1D MAC Bridging and Spanning Tree Filtering Capabilities

### Protocols

- **IP:** TCP, RIP V1 & V2, UDP, ICMP, ARP, UDP Relay, SYSLOG
- **IPX:** IPX, RIP, SAP, SPOOFING, and SAP Filtering, PPP
- **PPP:** LCP, IPCP, BCP, IPXCP, CCP, BAP, BACP, Multilink
- Network Address Translation
- **Frame Relay:** RFC 1490
- **Packet Filtering:** Pattern IP, IPX, Bridge

### WAN Optimization

- Dial-on-Demand
- Dynamic Bandwidth Management

### Compression

- CCP with LZS™ compression
- Compatible with Ascend® compression
- Compatible with Windows® 95 compression

### Security

- PAP, CHAP, Radius, Password Protection, EAP

### Analog Port (L128T only)

- Two RJ-11 REN = 4
- Rings up to 4 phones within 100 feet
- Supports Custom Calling features, Message Waiting (not supported in all countries)

### Certifications

- CISPR 22 Class B, EN 55022 Class B, EN 50082-1 (IEC 801-2,3,4), UL, CUL, CSA, CS03, EN60950, I-CTR 3, CE MARK

### Configuration

- VT100 terminal interface
- **Local:** EIA-232 interface
- **Remote:** Telnet or SNMP MIB-II and Enterprise MIB

### Diagnostics and Maintenance

- Loopbacks
- Ping Utility
- FLASH Upgradable Locally and Remotely
- TELNET Client & Server
- TFTP Client & Server
- DHCP/Boot Server, SNMP V1 MIB II, Enterprise MIB, TRAPS
- Performance Logs

### Physical Dimensions

#### Size

- 1.5" H, 6.25" D, 9" W

#### Weight

- 9.5 oz

#### Power

- 115 vAC, 60Hz, 8W
- 230 vAC, 50Hz, 8W

### Environmental

#### Operating Temperature

- 0°C to 50°C, 32°F to 122°F

#### Storage Temperature

- -20°C to 70°C, -4°F to 158°F

#### Relative Humidity

- Up to 95%, non-condensing

### Product Includes

- Express L128T
- 110 V Wall Mount Power Supply
- User Manual
- 6 Foot CAT-5 10-Base-T Cable
- 6 Foot RJ-45 Cable
- ADTRAN Utility Software

## Ordering Information

Equipment	Part #
Express L128T w/ Two Analog Ports	1202070L3
Express L128T w/ US Power Supply	4202070L1
Express L128T w\ European Power Supply	4202070L2
Express L128T w\ Australian Power Supply	4202070L3
Express L128T w\ British Power Supply	4202070L4

ISDN Ordering Codes are available to aid in ordering ISDN lines for this product



ADTRAN, Inc.  
Attention:  
International Department  
901 Explorer Boulevard  
Huntsville, Alabama 35806  
USA

[www.adtran.com](http://www.adtran.com)

Asia Pacific—Beijing, China  
8610 8857-6415 voice  
8610 8857-6417 fax  
[sales.china@adtran.com](mailto:sales.china@adtran.com)

Asia Pacific—Hong Kong  
852 2824-8283 voice  
852 2824-8928 fax  
[sales.asia@adtran.com](mailto:sales.asia@adtran.com)

Asia Pacific—Melbourne,  
Australia  
61 3 9658-0500 voice  
61 3 9658-0599 fax  
[sales.asia@adtran.com](mailto:sales.asia@adtran.com)

Canada—Ontario  
1 416 290-0585 voice  
1 416 296-1259 fax  
[sales.ontario@adtran.com](mailto:sales.ontario@adtran.com)

Canada—Quebec  
1 877 923-8726 toll free  
1 514 940-2888 voice  
1 514 940-2890 fax  
[sales.quebec@adtran.com](mailto:sales.quebec@adtran.com)

Canada—Other Provinces  
1 877 923-8726 toll free  
[sales.canada@adtran.com](mailto:sales.canada@adtran.com)

European Headquarters—  
Zürich, Switzerland  
41 43 211-6030 voice  
41 43 211-6020 fax  
[sales.europe@adtran.com](mailto:sales.europe@adtran.com)

Germany  
49 6007 930-203 voice  
49 6007 930-204 fax  
[sales.germany@adtran.com](mailto:sales.germany@adtran.com)

Latin America/Caribbean  
1 954 474-4424 voice  
1 954 474-1298 fax  
[sales.latin@adtran.com](mailto:sales.latin@adtran.com)

Mexico  
1 256 963-8240 voice  
1 256 963-6300 fax  
[sales.mexico@adtran.com](mailto:sales.mexico@adtran.com)

Northern Europe/Russia—  
London, United Kingdom  
44 1252 626-730 voice  
44 1252 617-850 fax  
[sales.northeurope@adtran.com](mailto:sales.northeurope@adtran.com)

U.S. Headquarters  
1 256 963-8000 voice  
1 256 963-6300 fax  
1 256 963-8200 fax back  
[international@adtran.com](mailto:international@adtran.com)



ADTRAN is a  
ISO 9001 registered company.



ADTRAN is a  
TI 9000 registered company.

Printed in the U.S.A.  
I1202070L3-8B June 2002  
©2002 ADTRAN, Inc. All rights reserved.

Specifications subject to change without notice. Windows is a registered trademark of Microsoft Corporation. Ascend is a registered trademark of Ascend Communications, Inc. Expert ISDN is a trademark of ADTRAN, Inc. LZS is a trademark of hi/fn. All registered trademarks and trademarks mentioned in this publication are the property of their respective owners.