



Express 5110

Frame Relay Access

Product Features

- Network Connection via 56/64k DDS DSU/CSU or external FT1 DSU/CSU
- RFC 1490 encapsulation for IP and LLC2
- SDLC local port spoofing
- IP support using SLIP, PPP-async, PPP-sync, with routing
- Frame relay concentrator mode which allows two frame relay devices to utilize a single network interface
- Prioritization scheme which ensures proper SNA response times in mixed protocol environment
- Frame relay management using ANSI, ITU, or LMI formats
- Easy to use VT100 interface for configuration
- Industry-leading five-year North American warranty

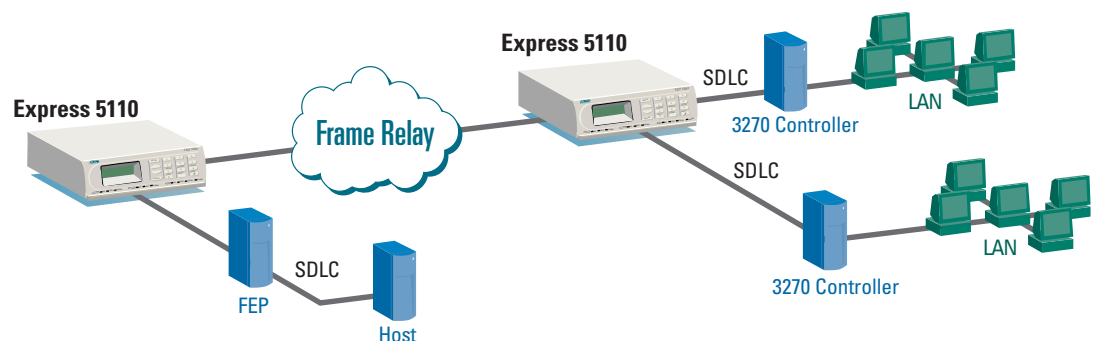
The ADTRAN Express 5110® is a stand-alone frame relay access device (FRAD) that provides a cost-effective means of transporting multi-protocol data over frame relay networks. The Express 5110 provides an easy-to-use interface for customers migrating existing services or developing new applications for operation over frame relay networks.

The Express 5110 provides two independent DTE interfaces for connecting non-frame relay devices to the frame relay network. The DTE ports support synchronous data rates from 2.4 to 512 kbps and asynchronous data rates from 2.4 to 38.4 kbps. Both EIA-232 and V.35 physical interfaces are available for connection to the customer's DTE equipment. The Express 5110's concentrator feature allows the connection of two frame relay devices to a single frame relay network interface.

The Express 5110 can be used with the integral 56/64 DDS DSU/CSU or an external DSU/CSU may be connected to the DCE interface. The DCE port supports network speeds up to 512 kbps and includes both EIA-232 and V.35 DCE interfaces.

The unit supports SNA, SDLC, SLIP, IP, PPP (both synchronous and asynchronous), frame relay, BOP, and asynchronous protocols. The DTE ports can be configured independently, providing support for multi-protocol applications.

Complete control, configuration, and diagnosis are available through a 16-position keypad and a two-line by 16-character LCD display. A VT100 terminal configuration and control mode is also available through the control port. Remote access is also available through inband Telnet. Flash download capability is implemented for installation of new features and enhancements.





ADTRAN, Inc.

Attn: Enterprise Networks
901 Explorer Boulevard
Huntsville, AL 35806

P.O. Box 140000
Huntsville, AL 35814-4000

256 963-8000 voice
256 963-8699 fax
256 963-8200 fax back

General Information
800 9ADTRAN
info@adtran.com
www.adtran.com

**Pre-Sales
Technical Support**
800 615-1176 toll-free
application.engineer@adtran.com
www.adtran.com/support

Where to Buy
877 280-8416 toll-free
channel.sales@adtran.com
www.adtran.com/where2buy

**Post-Sales
Technical Support**
888 423-8726
support@adtran.com
www.adtran.com/support

**ACES Installation &
Maintenance Service**
888 874-ACES
aces@adtran.com
www.adtran.com/support

International Inquiries
256 963 8000 voice
256 963-6300 fax
international@adtran.com
www.adtran.com/international

**For the regional office
nearest you, visit:**
www.adtran.com/where2buy



ADTRAN is an
ISO 9001:2000 certified supplier.



ADTRAN is a
TL 9000 3.0 certified supplier.

61202130L2-8D September 2003
Copyright © 2004 ADTRAN, Inc.
All rights reserved.

Express 5110

Frame Relay Access

Product Specifications

WAN Interface

- DDS
- **Data Rates:** 56 and 64 kbps
- **Line Interface:** RJ-48S, 4-wire
- **Receiver Sensitivity:** -45dB at all rates

DTE Interface

- **Asynchronous Rates:** 2.4 to 38.4 kbps
- **Synchronous Rates:** 2.4 to 512 kbps
- **Physical:** DB-25
- EIA-232
- V.35 with adapter cable

DCE Interface

- **Synchronous Rates:** 2.4 to 512 kbps
- **Physical:** DB-25
- EIA-232
- V.35 with adapter cable

Protocol Support

Concentrator

- Frame Relay

IBM Support

- SNA/SDLC with local spoofing
- SDLC/HDLC transparent
- SDLC-LLC2 translation
- Supports up to 20 SDLC PUs/port

LAN Protocol

- SLIP
- IP-PPP asynchronous or synchronous

Transparent

- Asynchronous transparent
- BOP transparent

Protocol Encapsulation

- IP (SLIP and PPP) and LLC2 protocols are encapsulated using RFC 1490 formats
- All other protocols use proprietary formats and require ADTRAN devices at each UNI

Configuration & Administration

- Local RS-232 craft interface
- Telnet
- Remote config
- Built in ping utility
- DSU and CSU loopbacks

Agency Approval

- **Emissions:** part 15 class A
- **Safety:** UL 1950, CUL
- **Telecom:** FCC part 68, industry Canada CS-03

Environment

Operating

- 0° to 50°C (32° to 122°F)

Storage

- -20° to 70°C (-4° to 158°F)

Relative Humidity

- Up to 95%, non-condensing

Physical

Dimensions

- 2.4" H, 8.0" W, 10.4" D

Weight

- 4.5 lbs

Power

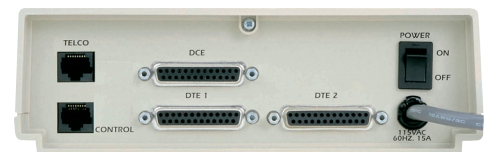
- 115 VAC, 60 Hz, 7 watts

Product Includes

- Express 5110
- DDS network cable
- RJ to DB-25 adapter and cable for control port
- User manual

Ordering Information

Equipment	Part #
Express 5110	1202130L2
V.35 Adapter Cable Male (6ft)	1200193L1
V.35 Adapter Cable Female (6ft)	1200194L1



Express 5110 Back

Specifications subject to change without notice. ADTRAN and Express 5110 are registered trademarks of ADTRAN, Inc. Openview is a registered trademark of Hewlett-Packard Company. NetView is a registered trademark of IBM, Inc. Solstice SunNet Manager is a trademark of Sun Microsystems, Inc. All registered trademarks and trademarks mentioned in this publication are the property of their respective owners.