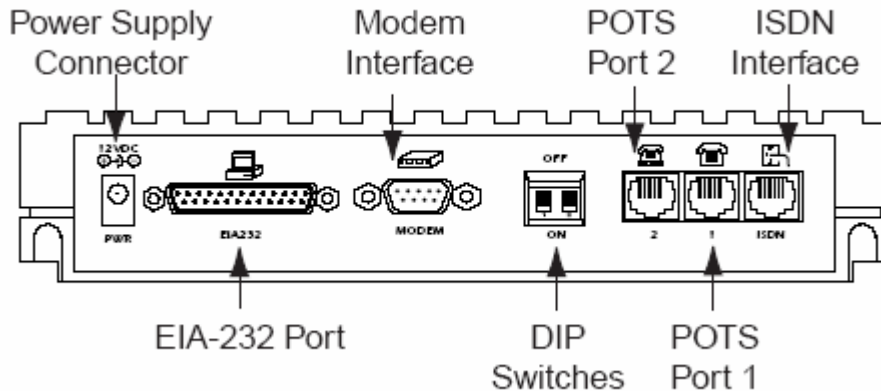


Express 3000 setup using the Express Configuration Wizard



Before you begin, connect your Express to your computer. Also connect your ISDN interface (line from the phone company) and power connector.

Use a serial connector to connect the Adtran to your computer's serial port. (Belkin part No. F2L088-10)

Once your modem is properly connected, restart your computer and proceed with the instructions.

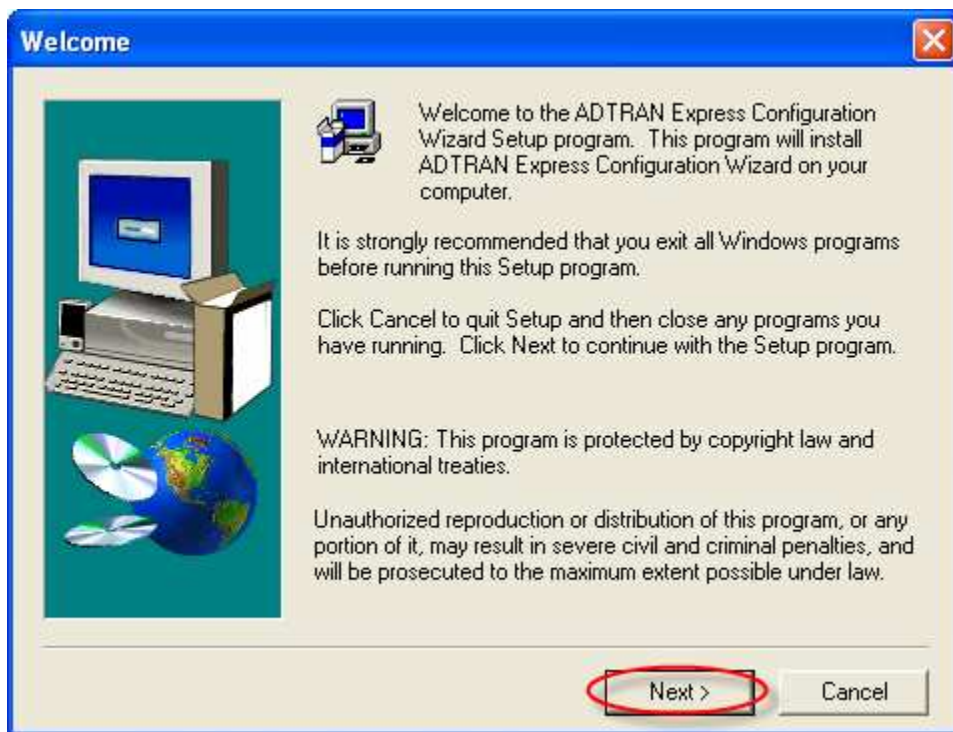
Description of ports:

EIA-232	Serial port that connects to your computer
Modem interface	This is used for a external 56K modem (usually not used)
DIP switches	Used to factory default the unit and set baud rate (for normal operation set both down to the on position)
POTS ports	Plain Old Telephone Service – used for phone use. Connect phones or faxes to these ports. If you use the internet and a phone, plug the phone into port 1 first.
ISDN interface	This is the ISDN connection to your telephone provider.

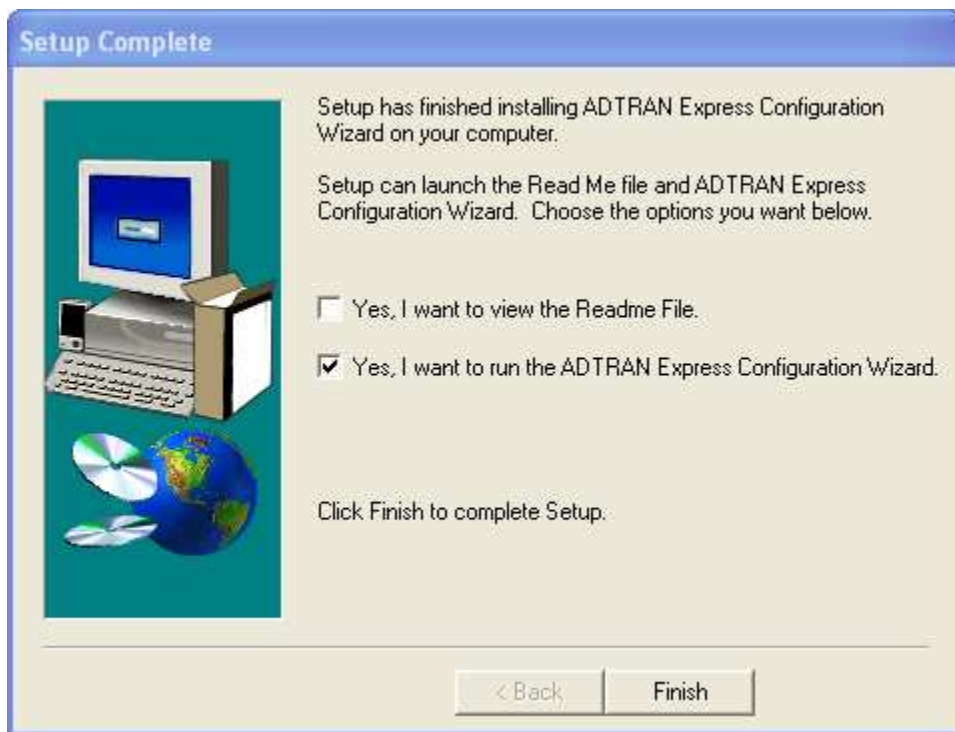


1. Insert Adtran Express 3000 CD-ROM into computer.
2. Click Install

Note: If you have already installed the Express 3000 software you can skip ahead.



3. Read instructions and click Next.



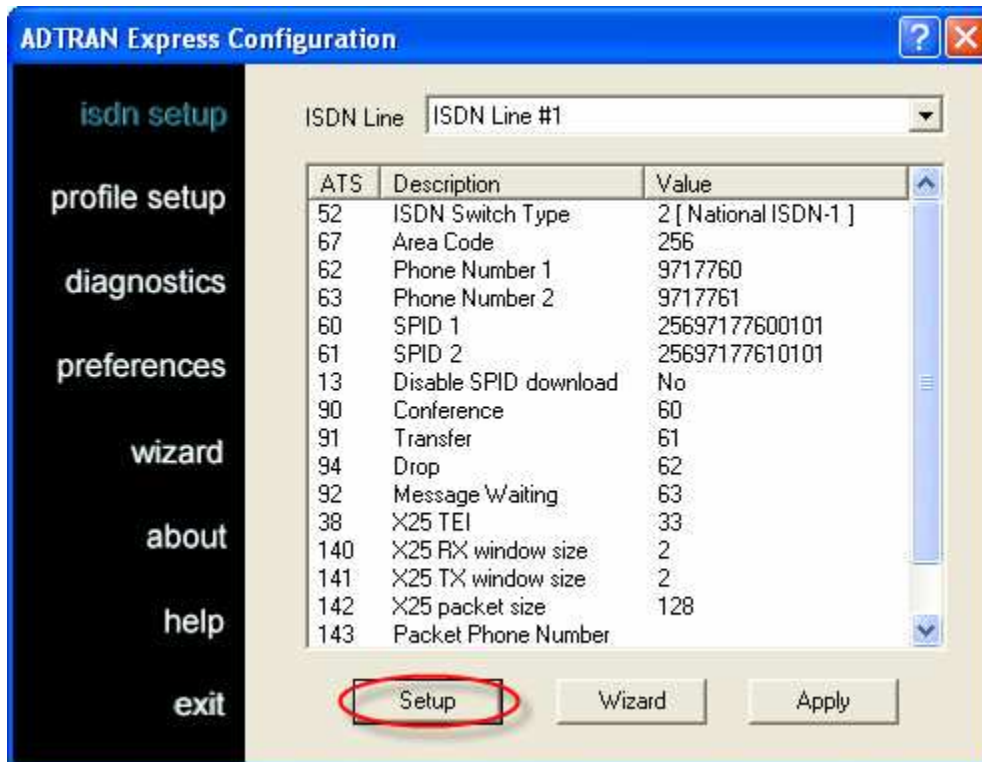
4. When you reach the last screen, make sure that the 2nd selection is checked.
5. Click Finish.
6. If your Express is connected to your computer the software will scan the device at this point.



7. Click Cancel, we do not want to use the Express Wizard.



Note: If you see this icon in your task bar, close it by right clicking and selecting exit. This will prevent you from opening the Adtran Express software.



7. Click on ISDN Setup.
8. Review the current settings. If no values are present for the Phone Number or SPID fields, click the Setup button at the bottom.

9. Insert the appropriate values for each field. This information should be provided to you by your telephone company.

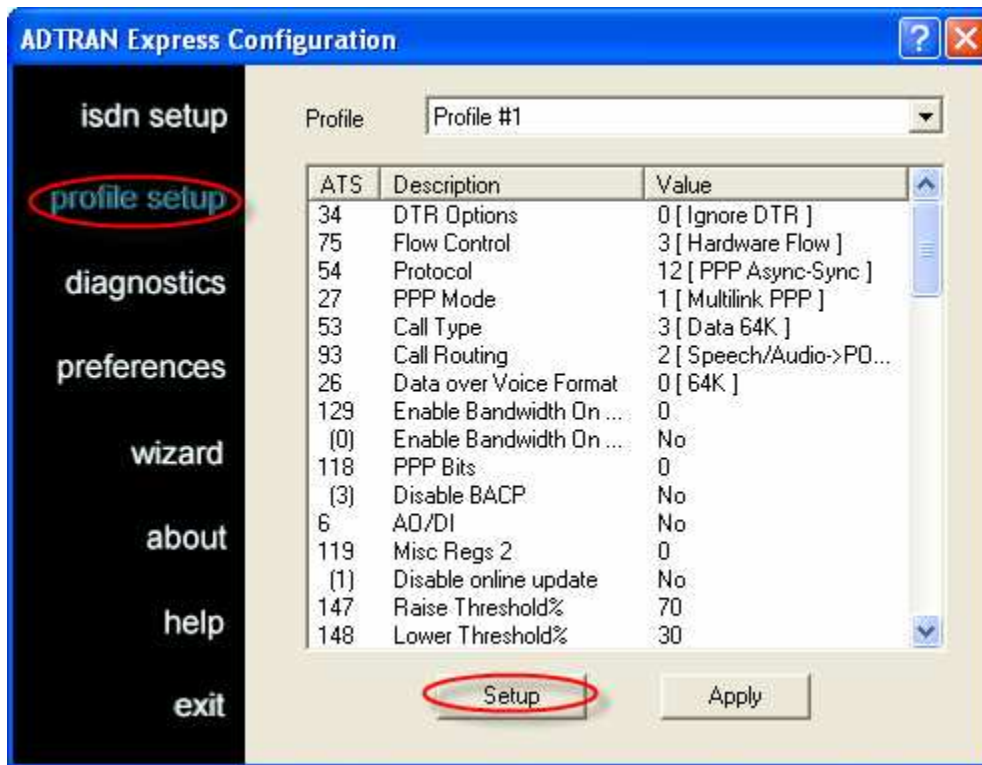
10. Check the “Disable SPID download” option.

Note: The most common switch type used is National ISDN-1. Your SPIDs will reflect this with the 0101 prefix on the end of each number.

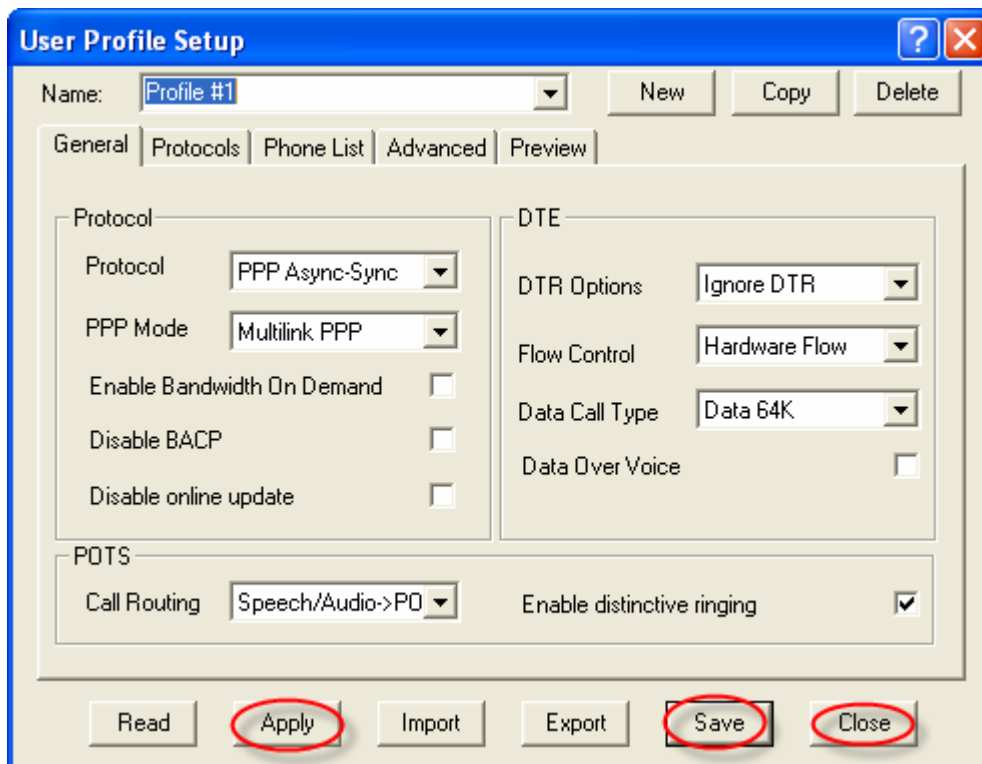
Note: Sometimes the Phone numbers are also referred to as LDNs.

Warning: Do not add the area code to the Phone numbers (LDNs), only add it to the SPIDs as shown in the example graphic.

11. Once complete, click Apply, Save than Close.



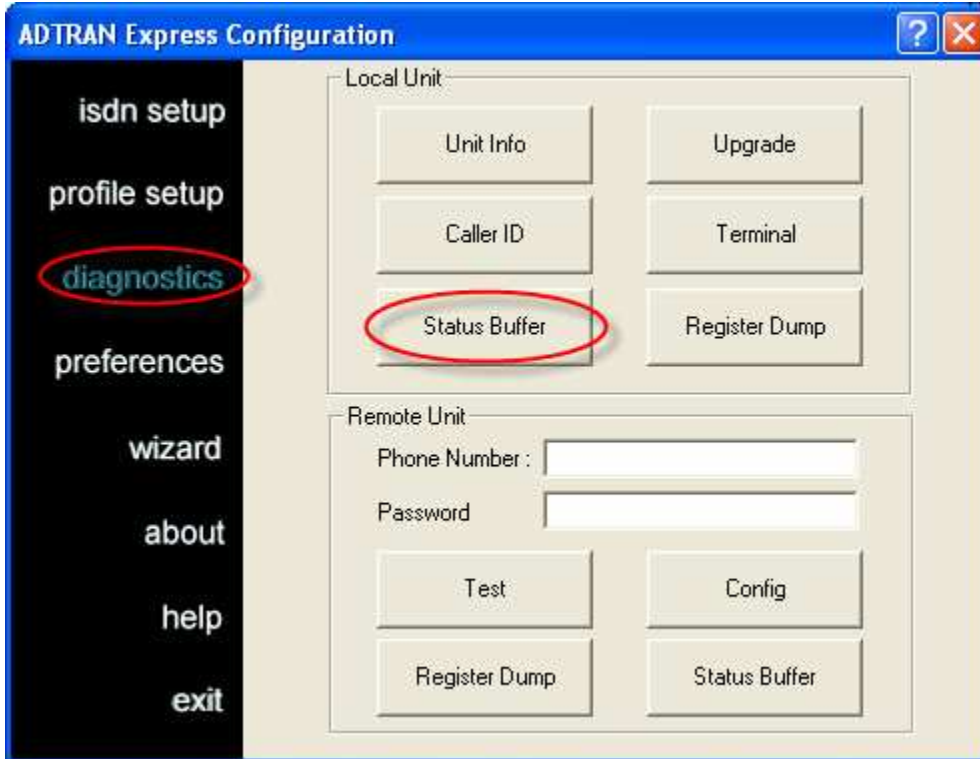
12. Now click on the “profile setup” and click on the Setup button.



13. Set your settings to match those in the graphic.

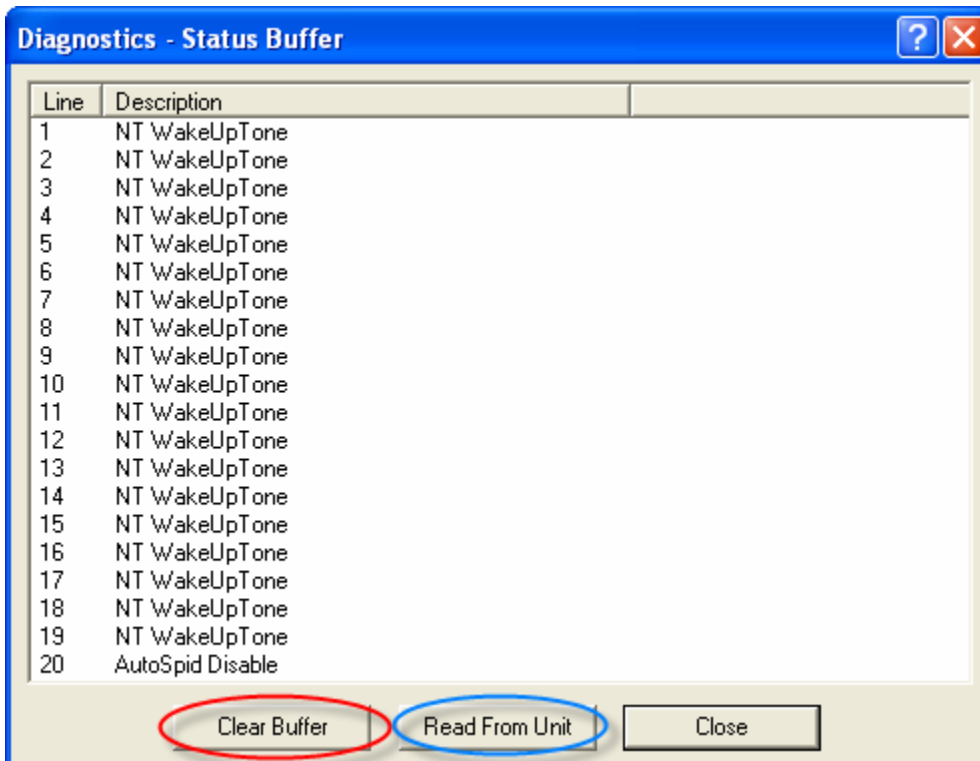
14. Click Apply, Save than Close.

Diagnostics in the Express 3000



15. Next click on the “diagnostics” section.

16. Click on the “Status Buffer” button.

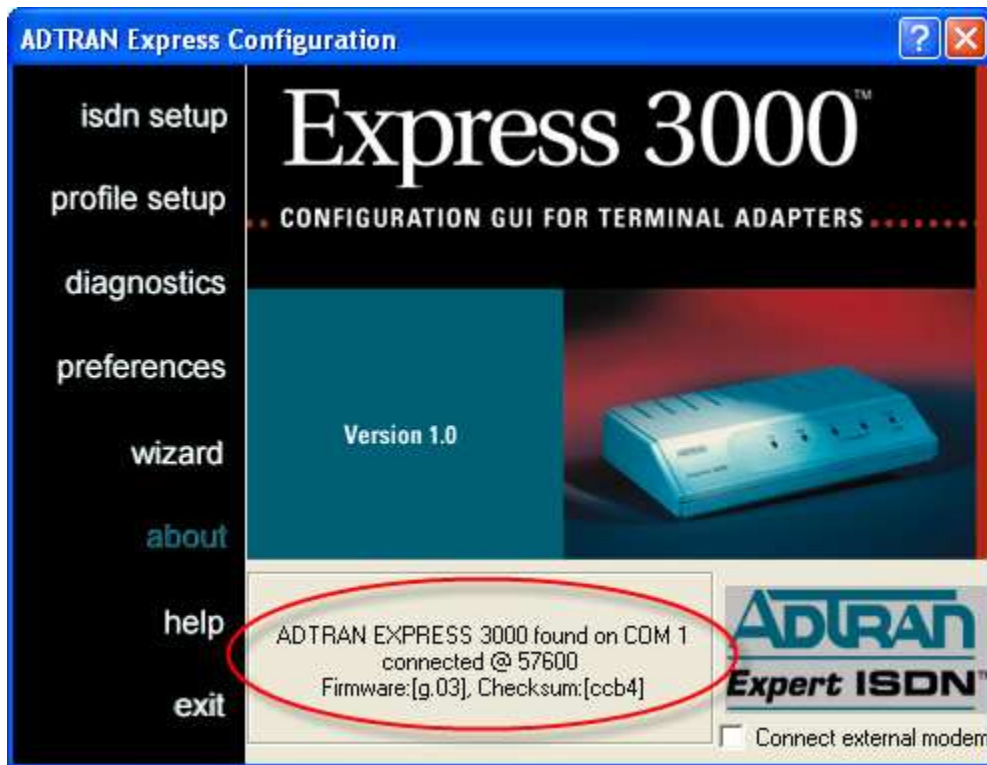


Note: The Status Buffer screen is often used in troubleshooting. Please take note of any information that may be here.

Take note to click the “Clear Buffer” button. This will clear the contents. After the buffer is cleared, disconnect the ISDN wire from the Express, then reconnect. Make a connection to our ISP from your PC, then click the “Read From Unit” button. This should show you information regarding your connection.

Note: Your display status may differ.

17. Click close.



17. Click on the “About” button on the side menu.

18. Note the firmware revision. The most recent version is g.03

(Please contact us at support@adtran.com or check our web site for firmware upgrade directions. Thanks!)