

**Express L128FP**  
**IDSL Router/Bridge**

**Part Number 1202070L4**

**Document Number 61202070L4-20A**

**May 1999**

**ADURAN**

**Trademarks:**

DMS-100 is a trademark of Northern Telecom, Inc.

Ethernet is a trademark of Digital Equipment Corporation, Intel Corporation, and Xerox Corporation.

Expert ISDN (patent number 5,715,241) is a trademark of ADTRAN, Inc.

Macintosh is a registered trademark of Apple Computer, Inc.

Novell, NetWare, and Internetwork Packet Exchange (IPX) are registered trademarks of Novell, Inc.

Windows is a registered trademark of Microsoft Corporation.

5ESS is a registered trademark of LUCENT.



901 Explorer Boulevard  
P.O. Box 140000  
Huntsville, AL 35814-4000  
(256) 963-8000

© 1999 ADTRAN, Inc.  
All Rights Reserved.  
Printed in U.S.A.

FCC regulations require that the following information be provided in this manual:

1. If this equipment causes harm to the telephone network, the telephone company may temporarily discontinue service. If possible, advance notification is given; otherwise, notification is given as soon as possible. The telephone company will advise the customer of the right to file a complaint with the FCC.
2. The telephone company may make changes in its facilities, equipment, operations, or procedures that could affect the proper operation of this equipment; advance notification and the opportunity to maintain uninterrupted service are given.
3. If experiencing difficulty with this equipment, please contact ADTRAN (see inside back cover) for repair and warranty information. The telephone company may require this equipment to be disconnected from the network until the problem is corrected or until it is certain the equipment is not malfunctioning.
4. This unit contains no user serviceable parts.

To ADTRAN service personnel: For continued protection against risk of fire, replace F1 with the same type and rating of fuse only: .2A, 250V.

## FEDERAL COMMUNICATIONS COMMISSION RADIO FREQUENCY INTERFERENCE STATEMENT:

This equipment has been tested and found to comply with the limits for a Class B digital device, pursuant to Part 15 of the FCC Rules. These limits are designed to provide reasonable protection against harmful interference when the equipment is operated in a commercial environment. This equipment generates, uses, and can radiate radio frequency energy and, if not installed and used in accordance with the instruction manual, may cause harmful interference to radio or TV reception. The user is encouraged to try to correct the interference by one or more of the following measures:

1. Reorient or relocate the receiving antenna.
2. Increase the separation between the equipment and receiver.
3. Connect the equipment into an outlet on a circuit different from that to which the receiver is connected.
4. Consult the dealer or an experienced radio/TV technician for help.

**WARNING**

*Change or modifications to this unit not expressly approved by ADTRAN will void the user's authority to operate the equipment.*

## ADTRAN YEAR 2000 (Y2K) READINESS DISCLOSURE

ADTRAN has established a Year 2000 program to ensure that our products and operations will correctly function in the new millennium. ADTRAN warrants that all products meet Year 2000 specifications regardless of model or revision. Information about ADTRAN's Year 2000 compliance program is available at the following:

Web Site	<a href="http://www.adtran.com">www.adtran.com</a>
Product Matrix	<a href="http://www.adtran.com/Y2Kfax.html">www.adtran.com/Y2Kfax.html</a>
Faxback Document Line	(256) 963-8200 <i>Y2K plans and product certifications are listed in the matrix</i>
Y2K Project Line	(256) 963-2200
E-mail	<a href="mailto:year2000@adtran.com">year2000@adtran.com</a>

## CANADIAN EMISSIONS REQUIREMENTS

This digital apparatus does not exceed the Class B limits for radio noise emissions from digital apparatus as set out in the interference-causing equipment standard entitled "Digital Apparatus," ICES-003 of the Department of Communications.

Cet appareil numérique respecte les limites de bruits radioélectriques applicables aux appareils numériques de Class B prescrites dans la norme sur le matériel brouilleur: "Appareils Numériques," NMB-003 édictée par le ministre des Communications.

## CANADIAN EQUIPMENT LIMITATIONS

Notice: The Canadian Industry and Science Canada label identifies certified equipment. This certification means that the equipment meets certain telecommunications network protective, operational, and safety requirements. The Department does not guarantee the equipment will operate to the user's satisfaction.

Before installing this equipment, ensure that it is permissible to be connected to the facilities of the local telecommunications company. The equipment must also be installed using an acceptable method of connection. In some cases, the company's inside wiring associated with a single-line individual service may be extended by means of a certified connector assembly (telephone extension cord). Compliance with the above conditions may not prevent degradation of service in some situations.

Repairs to certified equipment should be made by an authorized Canadian maintenance facility designated by the supplier. Any repairs or alterations made by the user to this equipment, or equipment malfunctions, may give the telecommunications company cause to request the user to disconnect the equipment.

Users should ensure for their own protection that the electrical ground connections of the power utility, telephone lines, and internal metallic water pipe system, if present, are connected together. This precaution may be particularly important in rural areas.



*Users should not attempt to make such connections themselves, but should contact the appropriate electric inspection authority, or an electrician, as appropriate.*

The **Load Number** (LN) assigned to each terminal device denotes the percentage of the total load to be connected to a telephone loop which is used by the device, to prevent overloading. The termination on a loop may consist of any combination of devices subject only to the requirement that the total of the Load Numbers of all devices does not exceed 100.

## **IMPORTANT SAFETY INSTRUCTIONS**

When using your telephone equipment, basic safety precautions should always be followed to reduce the risk of fire, electric shock and injury to persons. The precautions are listed below.

1. Do not use this product near water (for example, near a bath tub, wash bowl, kitchen sink or laundry tub, in a wet basement or near a swimming pool).
2. Avoid using a telephone (other than a cordless type) during an electrical storm. There may be a remote risk of electric shock from lightning.
3. Do not use the telephone to report a gas leak in the vicinity of the leak.
4. Use only the power cord, power supply, and/or batteries indicated in the manual. Do not dispose of batteries in a fire. They may explode. Check local codes for any special disposal instructions.

**SAVE THESE INSTRUCTIONS.**



# Table of Contents

---

Setting up the IDSL Line .....	Quick Start-1
<b>Chapter 1 Understanding IDSL and the Express L128FP ....</b>	<b>1-1</b>
The Express L128FP .....	1-1
Applications .....	1-1
Single User to Corporate LAN (Figure 1-2) .....	1-1
Frame Relay Connectivity to ADTRAN Frame Port 144 (Figure 1-3) .....	1-2
Small Office/Home Office (SOHO) to Corporate LAN (Figure 1-4) .....	1-3
Routing and Bridging with the Express L128FP .....	1-4
Factory Default .....	1-4
Bridging .....	1-5
IP Routing .....	1-5
IPX Routing .....	1-5
Concurrent Routing And Bridging .....	1-5
Network Address Translation Mode .....	1-6
Front Panel .....	1-7
Indicators .....	1-7
Rear Panel .....	1-7
Configuration .....	1-8
Security .....	1-9
<b>Chapter 2 Installation .....</b>	<b>2-1</b>
<b>Chapter 3 Terminal Menu Operation and Structure .....</b>	<b>3-1</b>
Terminal Menu Structure .....	3-1
Configuration .....	3-2
Status .....	3-2
Test .....	3-2
Logs .....	3-2
Utilities .....	3-2
Navigating the Terminal Menus .....	3-4
General Layout .....	3-4
Menu Path .....	3-4
Moving Around .....	3-4
Submenus [+] or [DATA] .....	3-4

Activation Field <+> .....	3-4
Editable Data Field .....	3-5
Read-Only Field .....	3-5
Navigation with the Keyboard .....	3-5
Security Levels .....	3-7
Configuration Menu .....	3-8
System Info .....	3-8
System Name .....	3-8
System Location .....	3-8
System Contact .....	3-9
Firmware Revision .....	3-9
System Uptime .....	3-9
Configuration/WAN .....	3-10
WAN/ISDN .....	3-10
ISDN/Clock Mode .....	3-10
IDSL/Channel Rate .....	3-11
IDSL/NEBEs .....	3-11
IDSL/FEBEs .....	3-11
WAN/L2 Protocol .....	3-11
Configuration/IP .....	3-12
IP/IP Address .....	3-12
IP/Subnet Mask .....	3-12
IP/Default Gateway .....	3-13
IP/Static Routes .....	3-13
Static Routes/Active .....	3-13
Static Routes/IP Address .....	3-13
Static Routes/Subnet Mask .....	3-13
Static Routes/Gateway .....	3-13
Static Routes/Hops .....	3-13
Static Routes/Private .....	3-14
IP/IP Router .....	3-14
IP Router/Mode .....	3-14
IP/RIP .....	3-14
IP/NAT .....	3-15
NAT/DHCP Mode .....	3-15
NAT/DHCP Renewal Time .....	3-16
NAT/Web Server .....	3-16
NAT/Default IP .....	3-16
IP/DNS .....	3-16
DNS/Domain Name .....	3-17

---

DNS/Server 1.....	3-17
DNS/Server 2.....	3-17
IP/UDP Relay.....	3-17
UDP Relay/Mode.....	3-17
UDP Relay/UDP Relay List.....	3-17
IP/Proxy ARP.....	3-18
Configuration/IPX.....	3-19
IPX/Mode.....	3-19
IPX/Network.....	3-19
IPX/Frame Type.....	3-20
IPX/Seed Status.....	3-20
IPX/RIP Timer.....	3-21
IPX/SAP Timer.....	3-21
Configuration/Bridge.....	3-21
Bridge/Mode.....	3-22
Bridge/WAN IP Bridge.....	3-22
WAN IP Bridge/Network.....	3-22
WAN IP Bridge/Netmask.....	3-23
WAN IP Bridge/Triggered.....	3-23
WAN IP Bridge/Proxy ARP.....	3-23
Bridge/WAN IPX Bridge.....	3-23
WAN IPX Bridge/Network.....	3-23
WAN IPX Bridge/Frame Type.....	3-24
WAN IPX Bridge/Seed Status.....	3-24
WAN IPX Bridge/Triggered.....	3-24
Configuration/Security.....	3-25
Security/Authentication.....	3-25
Security/Radius Server.....	3-26
Radius Server/Primary Server.....	3-26
Radius Server/Secondary Server.....	3-26
Radius Server/UDP Port.....	3-26
Radius Server/Secret.....	3-26
Radius Server/Retry Count.....	3-26
Security/PPP.....	3-27
Security/Filter Defines.....	3-27
Filter Defines /MAC Filter Defines.....	3-28
Filter Defines /Pattern Filter Defines.....	3-28
Filter Defines /IP Filter Defines.....	3-29
Filter Defines /IPX Filter Defines.....	3-30
Configuration/Frame Relay.....	3-32

Frame Relay/Maintenance Protocol .....	3-33
Frame Relay/Polling Frequency .....	3-33
Frame Relay/DLCI Mapping .....	3-33
DLCI Mapping/Active .....	3-34
DLCI Mapping/DLCI .....	3-35
DLCI Mapping/IP Map .....	3-35
DLCI Mapping/IPX Map .....	3-37
DLCI Mapping/Bridge Map .....	3-38
DLCI Mapping/Filters .....	3-39
Configuration/PPP Profile .....	3-42
PPP Profile/Authentication .....	3-42
Authentication/Tx Method .....	3-42
Authentication/Tx Username .....	3-43
Authentication/Tx Password .....	3-43
Authentication/Rx Username .....	3-43
Authentication/Rx Password .....	3-43
PPP Profile/IP .....	3-43
IP/Mode .....	3-43
IP/NAT .....	3-44
IP/Route .....	3-44
IP/RIP .....	3-45
PPP Profile/IPX .....	3-46
IPX/Mode .....	3-46
IPX/Remote Network .....	3-46
IPX/Triggered .....	3-47
IPX/Type 20 Packets .....	3-47
PPP Profile/Bridge .....	3-47
Bridge/Mode .....	3-47
PPP Profile/PPP .....	3-48
PPP/VJ Compression .....	3-48
PPP/Max Config .....	3-48
PPP/Max Timer .....	3-48
PPP/Max Failure .....	3-48
PPP Profile/Filters .....	3-49
Filters/WAN-to-LAN (In) .....	3-49
Filters/In Exceptions .....	3-50
Filters/LAN-to-WAN (Out) .....	3-51
Filters/Out Exceptions .....	3-51
Configuration/Management .....	3-52
Management/Telnet/Web .....	3-52

Telnet/Web/Server Access .....	3-52
Telnet/Web/User List .....	3-52
Management/SNMP .....	3-54
SNMP Access .....	3-54
SNMP/Communities .....	3-54
SNMP/Traps .....	3-55
Management/Maint Port .....	3-55
Maint Port/Password Protect .....	3-55
Maint Port/Password .....	3-55
Maint Port/Baud Rate .....	3-56
Maint Port/Data Bits .....	3-56
Maint Port/Parity .....	3-56
Maint Port/Stop Bits .....	3-56
Configuration/Terminal Mode .....	3-56
Status Menu .....	3-57
Status/Sessions .....	3-57
Sessions/PPP Session .....	3-57
Sessions/Frame Relay .....	3-58
Frame Relay/Port .....	3-58
Frame Relay/DLCI Table .....	3-59
Sessions/Spanning Tree .....	3-60
Status/ARP Cache .....	3-60
ARP Cache/IP Address .....	3-61
ARP Cache /MAC Address .....	3-61
ARP Cache/Time .....	3-61
Status/Bridge Table .....	3-61
Bridge Cache/MAC Address .....	3-61
Bridge Cache/Port .....	3-61
Bridge Cache/TTL .....	3-61
Status/IP Routes .....	3-61
IP Routes /IP Address .....	3-61
IP Routes /Netmask .....	3-62
IP Routes /Gateway .....	3-62
IP Routes /Port .....	3-62
IP Routes /Use .....	3-62
IP Routes/Flags .....	3-62
IP Routes/Hops .....	3-62
IP Routes/TTL .....	3-63
Status/IPX Routes .....	3-63
IPX Routes /Network .....	3-63

IPX Routes /Gateway .....	3-63
IPX Routes /Port .....	3-63
IPX Routes/Use .....	3-63
IPX Routes/Hops.....	3-63
IPX Routes/Ticks .....	3-64
IPX Routes/TTL .....	3-64
Status/IPX Servers.....	3-64
IPX Servers/Type.....	3-64
IPX Servers/Name.....	3-64
IPX Servers/Network .....	3-64
IPX Servers /Address .....	3-64
IPX Servers/Socket .....	3-64
IPX Servers/Hops .....	3-64
IPX Servers/TTL.....	3-65
Status/WAN Stats .....	3-65
Status/LAN Stats.....	3-65
Status/IP Stats .....	3-66
Test Menu .....	3-68
Test Menu/Echo Request .....	3-68
Logs Menu .....	3-69
Logs/Sys log Host .....	3-69
Logs/PPP Log .....	3-70
PPP Log/Active .....	3-70
PPP Log/Wrap .....	3-70
PPP Log/Level .....	3-70
PPP Log/View .....	3-70
PPP Log/Clear .....	3-70
Logs/Connection Log.....	3-70
Connection Log/Active.....	3-71
Connection Log/Wrap .....	3-71
Connection Log/Level.....	3-71
Connection Log/View.....	3-71
Connection Log/Clear.....	3-71
Logs/Network Log .....	3-71
Network Log/Active.....	3-71
Network Log/Wrap.....	3-72
Network Log/Level.....	3-72
Network Log/View.....	3-72
Network Log/Clear.....	3-72
Utilities Menu.....	3-73

---

Utilities/Ping .....	3-73
Utilities/Telnet Client .....	3-74
Utilities/Upgrade Menu .....	3-74
Upgrade/Transfer Method .....	3-74
Upgrade/TFTP Host .....	3-74
Upgrade/Filename .....	3-74
Upgrade/Status .....	3-75
Upgrade/Start Transfer .....	3-75
Upgrade/Abort Transfer .....	3-75
Upgrade/TFTP Server .....	3-75
Utilities/Exit .....	3-75
<b>Chapter 4 Specifications .....</b>	<b>4-1</b>
Specifications and Features .....	4-1
Network Interface .....	4-1
Ethernet Interface (LAN) .....	4-1
Display .....	4-1
Environmental .....	4-1
Physical .....	4-1
Power .....	4-1
<b>Appendix A Loop Status Messages .....</b>	<b>A-1</b>
<b>Appendix B Log Messages .....</b>	<b>B-1</b>
<b>Appendix C SNMP .....</b>	<b>C-1</b>
<b>Appendix D Connector Pinouts .....</b>	<b>D-1</b>
<b>Appendix E Terminal Mode Commands .....</b>	<b>E-1</b>
<b>Acronyms .....</b>	<b>Acronyms-1</b>
<b>Glossary .....</b>	<b>Glossary-1</b>
<b>Index .....</b>	<b>Index-1</b>





# List of Figures

---

Figure 1-1. Express L128FP . . . . .	1-1
Figure 1-2. Single User to Corporate LAN . . . . .	1-2
Figure 1-3. Frame Relay Connectivity to ADTRAN Frame Port 144 1-3	
Figure 1-4. SOHO to Corporate LAN . . . . .	1-3
Figure 1-5. Express L128FP Front Panel . . . . .	1-7
Figure 1-6. Express L128FP Rear Panel . . . . .	1-8
Figure 3-1. Top Level Terminal Menu. . . . .	3-3
Figure 3-2. Configuration/System Info Screen . . . . .	3-8
Figure 3-3. Configuration/WAN Screen. . . . .	3-10
Figure 3-4. Configuration/IP Screen . . . . .	3-12
Figure 3-5. Configuration/IPX Screen. . . . .	3-19
Figure 3-6. Configuration/Bridge Screen . . . . .	3-22
Figure 3-7. Configuration/Security Screen . . . . .	3-25
Figure 3-8. Configuration/Frame Relay Screen. . . . .	3-32
Figure 3-9. Configuration/PPP Profile Screen . . . . .	3-42
Figure 3-10. Configuration/Management Screen . . . . .	3-52
Figure 3-11. Status Screen . . . . .	3-57
Figure 3-12. Test Screen . . . . .	3-68
Figure 3-13. Logs Screen . . . . .	3-69
Figure 3-14. Utilities Screen . . . . .	3-73



# List of Tables

---

Table D-1. IBM/AT Style EIA-232 Interface .....	D-1
Table D-2. RJ-49C ISDN .....	D-1
Table D-3. 10BaseT Ethernet.....	D-2



# Quick Startup Guide

---

## SETTING UP THE IDSL LINE

The Express L128FP works over leased or “dry” copper provided by the local telephone company. See *Specifications* on page 4-1 for specifications on maximum distance.

1. Connect a VT 100 async terminal, or personal computer with a terminal emulator running 9600 N-8-1, to the **MAINTENANCE** port.
2. Hold down the **Control** key and press **R**; then press **Enter** to display the top menu.
3. Using the arrow keys and **Enter** key to navigate the menu, go to the **Configuration/WAN/ISDN** menu.
4. Set the rate of transfer that will be used. Both devices must be set at the same rate.
5. Use the left arrow key or the **Escape** key to go back up the menu tree. When asked to save ISDN parameters, type **y**.
6. Connect the IDSL line to the RJ-45 jack labeled **ISDN** on the rear panel. See *Connector Pinouts* on page D-1 for connector pinouts.
7. When the Loop LED(s) remain solid, the Express L128FP is in synchronization.
8. The Link LED will illuminate to indicate that PPP has successfully negotiated.



## Chapter 1 Understanding IDSL and the Express L128FP

---

IDSL is leased mode ISDN. ADTRAN provides a full line of IDSL products that are the price/performance leaders in the industry.

### THE EXPRESS L128FP

The Express L128FP is a standalone device that links two Local Area Networks (LANs) using a high-speed DSL two-wire line. The Express L128FP has a two-wire interface and operates up to 144 kbits per second.

Figure 1-1 on page 1-1 shows the Express L128FP.

The 10BaseT connector operates at 10 Mbps per second half duplex and accepts standard Ethernet packets encapsulated using IEEE 802.3 or Ethernet II (DIX). The maintenance port can connect to any asynchronous terminal emulating a VT 100 terminal for configuration.

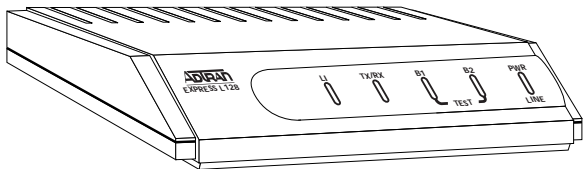


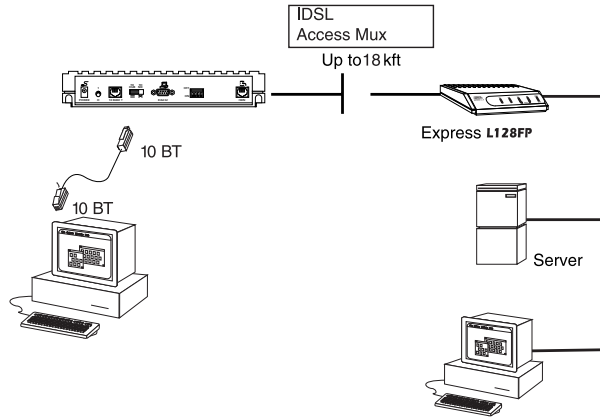
Figure 1-1. Express L128FP

## Applications

### Single User to Corporate LAN (Figure 1-2)

- Telecommuter/Home Office Access to the corporate LAN
- Single device access

- User Datagram Protocol (UDP) broadcasts are “relayed” to corporate LAN.
- Client device can obtain the Internet Protocol (IP) address dynamically using Dynamic Host Configuration Protocol (DHCP).
- Compatible with popular central site LAN access devices

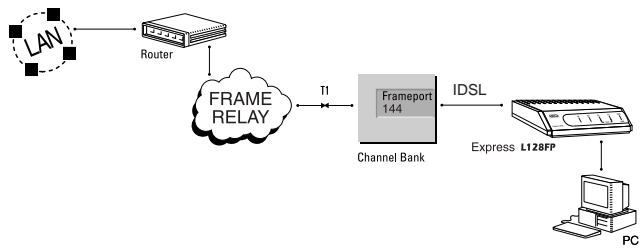


**Figure 1-2. Single User to Corporate LAN**

**Frame Relay Connectivity to ADTRAN Frame Port 144 (Figure 1-3)**

- Telecommuter/Home Office Access to the corporate LAN
- Access to any other router within the Frame Relay Network
- User Datagram Protocol (UDP) broadcasts are “relayed” to corporate LAN.
- FramePort 144 provides concentration of up to 96 IDSL interfaces into a single DS-1.

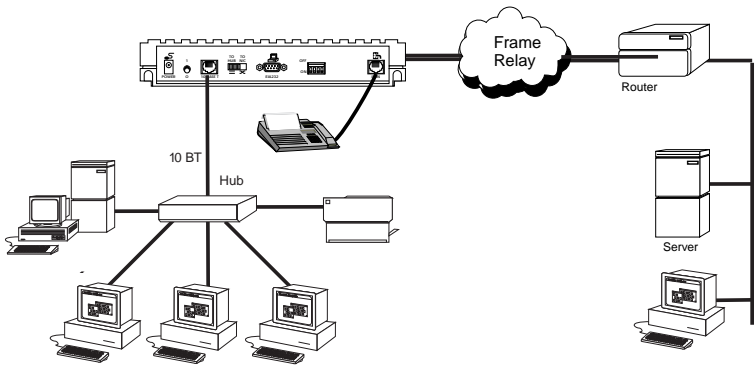




**Figure 1-3. Frame Relay Connectivity to ADTRAN Frame Port 144**

**Small Office/Home Office (SOHO) to Corporate LAN (Figure 1-4)**

- Connects the small office or home office to the corporate LAN
- Routes IP and Internet Packet Exchange (IPX) traffic from multiple devices to the corporate LAN
- Bridges all non-routed traffic (e.g., AppleTalk)
- Low cost alternative to buying a high-end router
- Compatible with popular central site LAN access devices



**Figure 1-4. SOHO to Corporate LAN**

The Express L128FP provides the following basic functions:

1. **LAN Bridge:** Bridging provides a point-to-point connection between two LANs. The bridge learning function scans the source and destination media access control (MAC) addresses of all packets on its local LAN and determines which packets should be transmitted over the IDSL link. Applications include connectivity between single user or small offices to corporate LANs.
2. **IP Router:** The Express L128FP can function as an IP router using the Routing Information Protocol (RIP) for advertising and learning routes among other routers. Static routes may also be entered into the routing table.
3. **IPX Router:** IPX routers and services can be exchanged between the Express L128FP and other devices using RIP and Service Advertising Protocol (SAP). Watch dog serialization filtering and spoofing can permit the ISDN to be idle during no application traffic periods.
4. **Network Address Translation (NAT):** Single networks can connect to the Internet with this function. The Express L128FP translates outgoing IP packets over the IDSL to the IP router at the Internet Service Provider. Many popular Internet applications are supported.
5. **PPP or Frame Relay:** The layer two protocol used to transfer packets can be PPP or Frame Relay (RFC 1490). PPP allows a point-to-point connection, whereas Frame Relay can provide up to ten permanent virtual circuits.

## Routing and Bridging with the Express L128FP

The Express L128FP is a Router and Transparent Learning Bridge. Its features can be easily configured and used once several basic concepts are understood.

### Factory Default

The Express L128FP comes from the factory configured for MAC Bridging with no filters or connection information defined. An IP address of 10.0.0.1 with a network mask of 255.255.255.0 is preloaded. The factory default layer two configuration is Auto Detect, which automatically detects PPP or Frame Relay.

## Bridging

In Bridge Mode, the Express L128FP can be used to connect two LAN segments. In this mode, all protocols are supported because they are transported across the IDSL link at the MAC layer. The Spanning Tree Algorithm can be used to guarantee a loop-free topology. MAC addresses are “learned” by each Express L128FP to prevent non-WAN packets from being bridged.

## IP Routing

The Express L128FP operates as an IP router when the **Configuration/IP/IP Router/Mode** option is configured to **On**. In PPP mode, the Express L128FP uses an IP unnumbered WAN interface; the IP address and mask assigned to the unit’s LAN interface apply to all routing and IP operations for the unit. In Frame Relay mode, each PVC can be specified as numbered or unnumbered links. If a default gateway is specified on the network of the Ethernet interface, the unit attempts to reach the gateway through that interface. If no default gateway is specified (i.e., 0.0.0.0) the WAN interface becomes the default gateway (recommended for remote applications when there are no other routers on the remote LAN).

## IPX Routing

Network routes and services are learned and advertised using Novell’s RIP and SAP.

## Concurrent Routing And Bridging

The Express L128FP can route IP and IPX as well as bridge non-IP/IPX packets simultaneously. The PPP profile will by default negotiate PPP network protocols to support the transmission and reception of IP, IPX, and Bridge packets. If the PPP peer does not accept a protocol, the Express L128FP will fall back to any combination of routing and bridging.

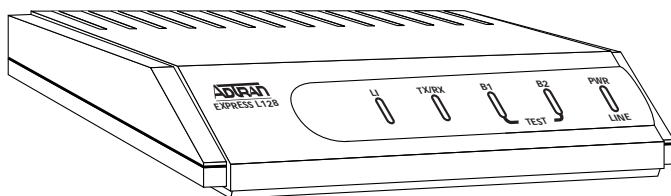
## Network Address Translation Mode

NAT is a special mode of operation in which the Express L128FP obtains a dynamically assigned IP address from the peer router (typically an Internet Service Provider). This allows a network of computers to appear as a single IP address.

NAT is enabled if the layer two protocol is PPP and the PPP profile has the IP parameter **NAT** set to **Yes**, or the layer two protocol is Frame Relay and a DLCI mapping has the **IP Map/Nat** parameter set to **Yes**. The network computer's IP stack may use DHCP to request an IP address, default gateway address, and domain name server addresses from the Express L128FP.

## Front Panel

Figure 1-5 shows the front panel of the Express L128FP. The indicators are divided into LAN functions, WAN functions, and Test functions.



**Figure 1-5. Express L128FP Front Panel**

### Indicators

<b>TX/RX</b>	Flashes when transmitting and receiving data on the 10BaseT connector.
<b>LI</b>	Link integrity. Illuminates when there is a good connection between the Express L128FP and the Hub/NIC card.
<b>PWR</b>	Flashes when the IDSL link (pins 4 and 5 on RJ-45) is not in sync. Solid when in sync.
<b>TEST 1, 2</b>	Illuminates solid when either PPP or Frame Relay has an active connection. Flashes when trying to establish a PPP or Frame Relay connection.

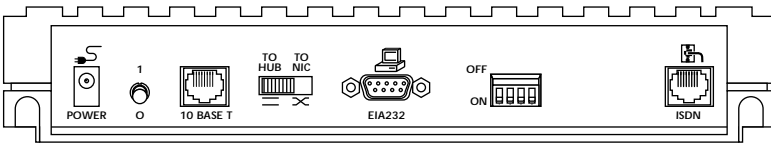
## Rear Panel

The Express L128FP has one RJ-45 jack, labeled **ISDN**, on the rear panel for network connection (Figure 1-6 on page 1-8).

The **OFF/ON** switch block is for factory default and firmware downloading. With switch 1 in the up or **OFF** position, the Express L128FP will immediately go into a download mode when power is enabled. Switch 1 must be in the down or **ON** position in order to boot up nor-

mally. Switch 2 in the up or **OFF** position will force the entire configuration to be factory defaulted.

The Express L128FP transfers data up to 144 kbps over a two-wire facility. This type of service is a permanent connection between end-points or between the unit and the Frame Relay cloud. It is sometimes referred to as a leased connection, a dedicated connection, a “nailed-up” connection, or a private circuit. Leased connection or leased line is used in this manual to represent these types of services.



**Figure 1-6. Express L128FP Rear Panel**

## Configuration

The Express L128FP is configured using a menu-based interface. This interface can be accessed via the maintenance port using any asynchronous VT 100 terminal or personal computer running a terminal emulation program, or via IP using a Telnet client program or web browser. To use the Telnet interface or web browser, the Express L128FP must first have an IP address programmed into it via the maintenance port. The factory default is 10.0.0.1.

## Security

Security on network devices is a major concern for almost anyone with a network. The Express L128FP provides many tools for securing the local network from hostile users. Connections can be authenticated using passwords. A RADIUS client can also be used.

The Telnet and web browser configuration can also be protected using the same authentication methods. Each menu item in the Express L128FP has a security level associated with it. A Telnet session is assigned a privilege level which determines which menu items are accessible to the Telnet client. See *Security Levels* on page 3-7 for more information on menu security levels.

Filters can be defined to prevent certain addresses or protocols from being transferred from LAN-to-WAN, WAN-to-LAN, or WAN-to-WAN.

As already mentioned, a web browser can be used to configure the Express L128FP. This is accomplished by entering **http://10.0.0.1** on any Windows Internet Explorer browser. If the Express L128FP's IP address has been changed from the factory default, then 10.0.0.1 should be replaced by that address.





## Chapter 2 Installation

---

After unpacking the unit, immediately inspect it for possible shipping damage. If damage is discovered, file a claim immediately with the shipping carrier; then contact the ADTRAN Repair and Return department.

### **IDSL NETWORK CONNECTION**

The Express L128FP supports leased operation. A single RJ-49C modular jack labeled **ISDN** on the rear panel provides connection to the network. Leased operation mode supports dedicated 2B1Q data service at rates up to 144 kbps by using a nailed up circuit, or a permanent connection between endpoints.

ISDN network connector pin assignments are given in Appendix D.

### **L128FP LOCAL AREA NETWORK CONNECTION**

The Express L128FP has a single 10BaseT connection port that provides half duplex 10 Mbps operation over a 4-wire twisted pair. Other types of Ethernet interfaces (i.e., AUI, 10Base2, etc.) can be accommodated by obtaining an appropriate converter.



## Chapter 3 Terminal Menu Operation and Structure

---

### TERMINAL MENU STRUCTURE

The Express L128FP uses a multilevel menu structure containing both menu items and data fields. All menu operations and data display in the terminal menu window. The Express L128FP is shipped in the Factory Default configuration. Connect any VT 100 or VT 220 type terminal emulator to the maintenance port. The default rate is 9600 baud 8-N-1. The terminal emulator can flow the Express L128FP off using software flow control. Hardware flow control is not used.

The opening menu (the Main menu, or top-level menu) is the access point to all other operations. Each Main menu item has several functions and submenus to identify and access specific parameters. Figure 3-1 on page 3-3 shows the top-level terminal menu.



*To edit items in the terminal menus, you must have the appropriate security level. Each menu description in this section indicates the required security level required for write access. The maintenance port is always at security level 0, giving full access to all configuration items.*

The Main menu contains the following options.

## > CONFIGURATION

The **Configuration** menu provides options to set up the operational configuration for the Express L128FP. See the section *Configuration Menu* on page 3-8 for detailed information on the available options.

## > STATUS

The **Status** menu provides options to review and monitor the status of the Express L128FP system. See the section *Status Menu* on page 3-57 for detailed information on the available options.

## > TEST

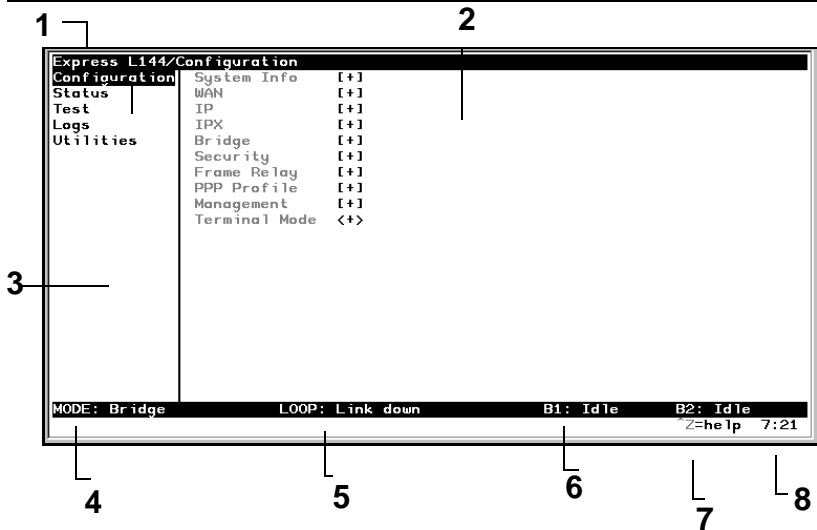
The **Test** menu can be used for performing diagnostic testing of the Express L128FP. See the section *Test Menu* on page 3-68 for detailed information on the tests available.

## > LOGS

The **Logs** menu can be used for viewing the operational logs for the Express L128FP. See the section *Logs Menu* on page 3-69 for detailed information on the available options.

## > UTILITIES

The **Utilities** menu provides tools for system diagnostics and upgrading the Express L128FP. See the section *Utilities Menu* on page 3-73 for detailed information on the available options.



- 1 **Menu Path** Describes the current position in the terminal menu structure.
- 2 **Right Pane** Lists available submenus. Additional submenus available through this pane are indicated by the [+] and [DATA] symbols.
- 3 **Left Pane** Lists available menus.
- 4 **Mode** Describes current operating mode.
- 5 **Loop Status** Displays current status of IDSL line.
- 6 **Rate Status** Displays current rate of connection.
- 7 **Navigation Help** Displays list of characters you can use to navigate the terminal menus (press **Control-Z**).
- 8 **Time** Displays the current time.

**Figure 3-1. Top Level Terminal Menu**

## NAVIGATING THE TERMINAL MENUS

The following sections provide information on how to navigate through the terminal menus.

### General Layout

When you first start a terminal mode session, the screen shown in Figure 3-1 on page 3-3 displays. The screen is divided into left and right panes. The left pane shows the current list of submenus, while the right pane shows the contents of a selected submenu.

### Menu Path

The top line of the display shows this session's current position (path) in the menu tree. Figure 3-1 on page 3-3 shows the top menu level with the cursor on the Configuration submenu, so the path display shows **Express L128FP/Configuration**.

### Moving Around

Press **Tab** or the right arrow key to move the cursor from the left pane to the right pane. Press **Tab** or the left arrow key to move the cursor from the right pane back to the left pane. Use the up and down arrows to move around within each pane. Press **Enter** to activate a menu. Press the left arrow key or the **Escape** key to go back up the menu. The following options display throughout the menus.

#### Submenus **[+]** or **[DATA]**

Menus that display **[+]** or **[DATA]** indicate that more items are available when selected.

#### Activation Field **<+>**

Menus that display **<+>** indicate that an action is to be taken, such as activating a test.

## Editable Data Field

A highlighted menu item indicates that you can enter data in that field.

## Read-Only Field

An underlined field is a display field that contains read-only information.

## Navigation with the Keyboard

You can use different keystrokes to navigate through the terminal menu. Press **Control-Z** to activate a pop-up screen with the available keystrokes. The following section provides a list of the available keystrokes and the results:

### General Navigation

- |                   |  |
|-------------------|--|
| <b>H</b>          | Returns to the home screen.  |
| <b>J</b>          | Jumps between two menu items. Press <b>J</b> while on a menu item of interest, and you will jump back to the main screen. Go to another menu item of interest, Press <b>J</b> , and you will jump back to the screen that was displayed the first time you pressed <b>J</b> . Press <b>J</b> anytime you want to jump between these items. |
| <b>Arrow Keys</b> | Selects items and moves between the left and right panes. The left arrow key allows you to go back up the menu.  |
| <b>Enter</b>      | Activates an item or moves into submenu.   |
| <b>Escape</b>     | Cancels an edit. Allows you to go back up the menu. Also will dismiss the pop-up help screens.   |
| <b>Tab</b>        | Moves between the left and right panes.  |
| <b>A</b>          | Moves to the top of a screen.  |
| <b>Z</b>          | Moves to the bottom of a screen.   |
| <b>Backspace</b>  | Ascends one menu level.  |

## Session Management

- Control-L** Logs out of the session.
- Control-S** Invalidates the password entry and returns to the login screen. The Password prompt will display.
- Control-R** Refreshes the screen. To save time, only the portion of the screen that has changed is refreshed. This option should be necessary only if the display picks up incorrect characters.

## Configuration

- F** Restores factory default settings. This setting restores the factory defaults based on the location of the cursor. Entire submenus can be factory defaulted.
- C** Copies selected items to the clipboard. The amount of information you can copy depends on the cursor location when you press **C**. For example, if the cursor is over an editable field, only that item is copied. If the cursor is over the index number of a list, then all of the items in the row of the list are copied. For example, if the cursor is over the **Num** field in the Frame Relay Mapping screen, all of the information associated with the Map entry is copied.
- P** Pastes the item stored in the clipboard, if the information is compatible. You must confirm all pastes except those to a single editable field.
  - >** For certain types of fields, when you paste information into the field, the value increments by 1.
  - <** For certain types of fields, when you paste information into the field, the value decrements by 1.
- I** Inserts a new item in a list. For example, add a new item to the Connection List by pressing **I** while the cursor is over the index number.
- D** Deletes a list item. For example, delete an item from the Connection List by pressing **D** while the index number is active.



## Security Levels

Each menu item on the configuration screens has an associated security level. The security level ranges from 0 (highest security level) to 5 (lowest security level). This level determines whether a Telnet session can access that menu item. The Telnet session is assigned a security level set by the user. Passwords can only be accessed as security level 0. The maintenance port is always at security level 0.

The security levels are assigned as follows:

### Level

- 0 Access all parameters including passwords
- 1 Access all parameters except passwords
- 2 Access all parameters except passwords and authentication methods
- 3 Access all parameters except passwords, authentication methods, and IDSL parameters
- 4 Access only test and status menus
- 5 Access status menus only

## > CONFIGURATION MENU

### » System Info

The **System Info** menu provides basic information about the unit and displays data fields for editing information. *Figure 3-2* displays the submenus available under this menu item.

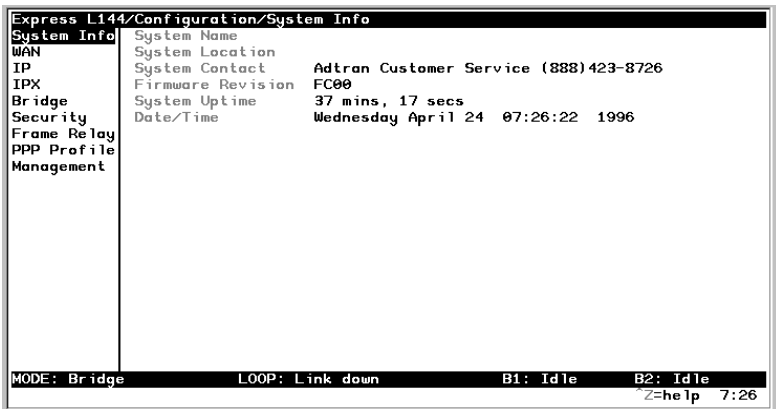


Figure 3-2. Configuration/System Info Screen

### »» System Name

Write security: 3; Read security: 5

Provides a user-configurable text string for the name of the Express L128FP. This name can help distinguish between different installations. You can enter up to 31 alpha-numeric characters in this field, including spaces and special characters (such as an under bar). The system name is also used for PPP authentication and IPX service name.

### »» System Location

Write security: 3; Read security: 5

Provides a user configurable text string for the location of the Express L128FP. This helps to keep track of the physical location of the unit.

You can enter up to 31 alpha-numeric characters in this field, including spaces and special characters (such as an under bar).

»» **System Contact**

Write security: 3; Read security: 5

Provides a user-configurable text string for the contact name. This field can contain a name, phone number, or e-mail address of a person responsible for the Express L128FP. You can enter up to 31 alpha-numeric characters in this field, including spaces and special characters (such as an under bar).

»» **Firmware Revision**

Read security: 5

Displays the current firmware revision level of the Express L128FP. This field is a read-only field.

»» **System Uptime**

Read security: 5

Displays the length of time the Express L128FP has been running since power up or reset. This field is a read-only field.

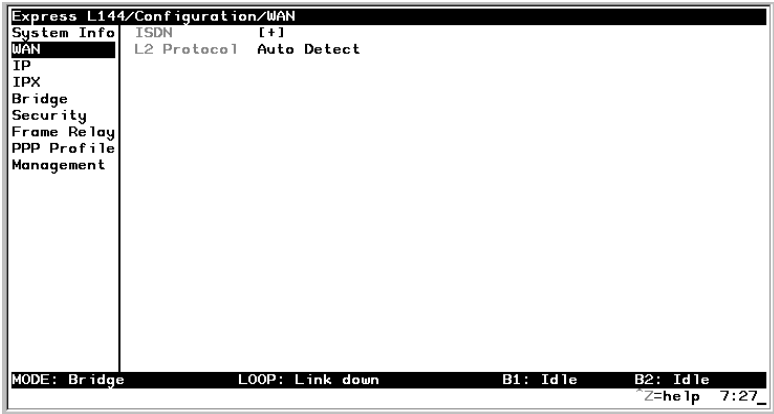
»» **Date/Time**

Write security: 3; Read security: 5

Displays the current date and time as programmed in the real time clock. This field can be edited. Enter the time in 24-hour format (such as 23:00:00 to represent 11:00 p.m.). Enter the date in mm-dd-yyyy format (for example, 09-30-1999).

## » Configuration/WAN

The **WAN** menu is used to set up the ISDN parameters for the Express L128FP. *Figure 3-3* shows the **WAN** menu.



**Figure 3-3. Configuration/WAN Screen**

### »» WAN/ISDN

Write security: 2; Read security: 5

Selects the mode the IDSL line is in.

### ISDN/Clock Mode

Write security: 2; Read security: 5

The Express L128FP can operate as a slave or a master.

**IDSL/Channel Rate**

Write security: 2; Read security: 5

Determines the rate at which data is transferred over the IDSL link. Possible rates are 64K, 128K, and 144K, or Auto. When **Auto** is selected, the Express L128FP will determine the rate to use.

**IDSL/NEBEs**

Read security: 5

This contains the number of Near-End-Block-Errors (NEBEs) that have been detected by the Express L128FP's IDSL circuitry. Continuous errors can indicate a line problem, but a burst at one time is normal.

**IDSL/FEBEs**

Read security: 5

This contains the number of Far-End-Block-Errors (FEBEs) that have been detected by the IDSL circuitry on the other end of the link. Continuous errors can indicate a line problem, but a burst at one time is normal.

**»» WAN/L2 Protocol**

Write security: 3, Read security: 5

This parameter specifies the layer 2 data link layer transport used. When selected as **PPP**, the Express L128FP will negotiate PPP over the IDSL interface. This is used mainly for campus wiring applications. Parameters for controlling the PPP negotiation are in the **Configuration/PPP Profile** menu. **Frame Relay** should be selected when the Express L128FP is connected to a Frame Relay switch. The **Configuration/WAN/Frame Relay** menu is used for controlling the Frame Relay parameters. When **Auto Detect** (def) is selected, the Express L128FP will look at the incoming packets in order to determine what layer 2 protocol to use.

## » Configuration/IP

The IP menu is used to set up the IP parameters for the Express L128FP. Any general IP-related configuration item is under this menu. *Figure 3-4* shows the IP menu.

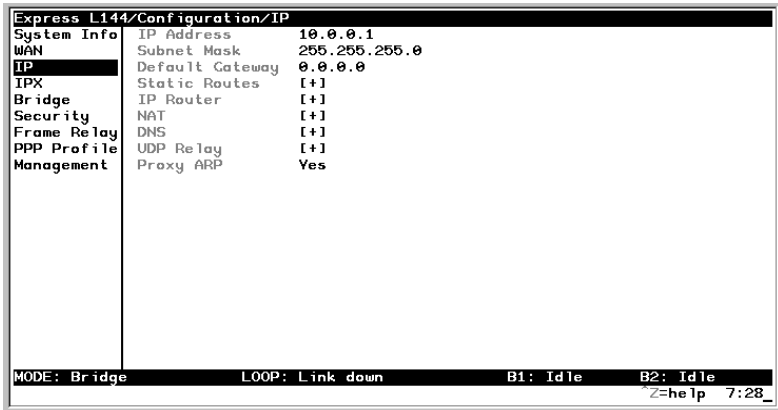


Figure 3-4. Configuration/IP Screen

### »» IP/IP Address

Write security: 2; Read security: 5

The IP address assigned to the Express L128FP's Ethernet port is set here. This address must be unique within the network. Factory default is 10.0.0.1.

### »» IP/Subnet Mask

Write security: 2; Read security: 5

The IP network mask to be applied to the Express L128FP's Ethernet port is set here. Factory default is 255.255.255.0.

### »» IP/Default Gateway

Write security: 3; Read security: 5

The default gateway is used by the Express L128FP for sending IP packets whose destination address is not found in the route table. If this address is all zeros, then the first WAN connection becomes the default gateway.

### »» IP/Static Routes

Static Routes can be inserted under this menu.

#### **Static Routes/Active**

Write security: 4; Read security: 5

Adds this static route entry to the IP routing table when set to **Yes** (def) and removes it (if it was previously added) if set to **No**.

#### **Static Routes/IP Address**

Write security: 4; Read security: 5

This is the IP address of the host or network address of the device being routed to.

#### **Static Routes/Subnet Mask**

Write security: 4; Read security: 5

This mask determines the bits in the previous IP address that are used. If this is to be a host route, it must be set to all ones (255.255.255.255).

#### **Static Routes/Gateway**

Write security: 4; Read security: 5

This is the IP address of the router to receive the forwarded IP packet.

#### **Static Routes/Hops**

Write security: 4; Read security: 5

This is the number of router hops required to get to the network or host. Maximum distance is 15 hops.

### **Static Routes/Private**

Write security: 4; Read security: 5

When set to **No**, the Express L128FP will advertise this static route using RIP. Otherwise, setting to **Yes** means that the route is kept private.

### **»» IP/IP Router**

The IP router is configured under this menu as follows.

### **IP Router/Mode**

Write security: 3; Read security: 5

When this option is set to **On**, the Express L128FP will advertise and listen to routes from other IP routers. If **Off** (def), the route table is still used but only static routes are used for routing IP packets and only the Ethernet port is used. IP packets can be sent over the WAN, but only when bridged.

### **IP/RIP**

Write security: 3; Read security: 5

The Routing Information Protocol (RIP) is supported by the Express L128FP. The following parameters are required for setting up the mode on the Ethernet port:

### **RIP/Mode**

Write security: 3; Read security: 5

This option turns RIP **On** or **Off** (def).

### **RIP/Protocol**

Write security: 3; Read security: 5

Version can be **V1** (def) or **V2**.



**RIP/Method**

Write security: 3; Read security: 5

- |                             |  |
|-----------------------------|--|
| <b>Split Horizon</b>        | Only routes not learned on the Ethernet port are advertised.   |
| <b>Poison Reverse (def)</b> | All routes are advertised, including routes learned from the Ethernet port. These routes are poisoned.                 |
| <b>None</b>                 | All routes are advertised, including routes learned from the Ethernet port. No attempt is made to poison these routes. |

**RIP/Direction**

Write security: 3; Read security: 5

- |                        |  |
|------------------------|--|
| <b>Tx and Rx (def)</b> | RIP advertisements are transmitted and listened to on the Ethernet port. |
| <b>Tx only</b>         | RIP advertisements are transmitted and not listened to.                  |
| <b>Rx only</b>         | RIP advertisements are listened to but not transmitted.                  |

**RIP/V2 Secret**

Write security: 0; Read security: 0

This is a text string used to authenticate advertised routes.

**»» IP/NAT**

The Network Address Translation general parameters are set up under this menu.

**NAT/DHCP Mode**

Write security: 3; Read security: 5

When this option is set to **On**, the Express L128FP acts as a DHCP server and will dynamically assign IP, network mask, default gateway, and DNS addresses to any device which transmits a broadcast DHCP request. The addresses assigned are based on the Express L128FP's own IP address and will be within the same network. This mode is most commonly used with the NAT functionality. The default is **Off**.

### **NAT/DHCP Renewal Time**

Write security: 3; Read security: 5

This is the number of hours that the DHCP server should allow the device before it is required to send a new DHCP request. The default is 15 hours, and 0 represents an infinite lease.

### **NAT/Web Server**

Write security: 3; Read security: 5

This is the IP address of a web server on the Ethernet network. When an active NAT connection is made to the Internet, any HTTP, FTP, or SMTP server requests from the WAN are translated and sent to this web server. Normally, communication across NAT must be initiated from the LAN side of the Express L128FP. Web Server allows a single machine on the NAT side to be accessed from the Internet side of NAT. This provides outside access to a web server, mail, or ftp server.

### **NAT/Default IP**

This is the IP address used by the Express L128FP for Network Address Translation when nothing is assigned during the PPP negotiation when PPP mode is active or when nothing is specified in the DLCI Mapping's Link IP Address.

## **»» IP/DNS**

The Domain Name Server parameters used by the Express L128FP are specified here. The DNS server addresses can be exchanged between PPP peers. When a connection occurs and IPCP is negotiated, the Express L128FP will get the DNS server addresses from the PPP peer. If the configured DNS server addresses (**Server 1** and **Server 2**) are all zeros, the addresses from the PPP peer are used. In NAT mode, the PPP peer's DNS addresses are always used. The DNS addresses set in **Server 1** and **Server 2** are offered to a PPP peer if requested.

### **DNS/Domain Name**

Write security: 3; Read security: 5

This is a text string used to represent the domain name used by the Express L128FP.

### **DNS/Server 1**

Write security: 3; Read security: 5

This is the IP address for the primary DNS device. It is the first server that domain name requests are sent.

### **DNS/Server 2**

Write security: 3; Read security: 5

This is the IP address for the secondary DNS device. It is used as a back-up in case the primary address does not respond to the request.

### **»» IP/UDP Relay**

The Express L128FP can be configured as a relay agent for UDP broadcast packets. Normally, a router will not forward UDP broadcast packets. However, many network applications use UDP broadcasts to configure addresses, host names, and other information. If hosts using these protocols are not on the same network segment as the servers providing the information, the client programs will not receive a response without enabling the UDP relay agent.

### **UDP Relay/Mode**

Write security: 3; Read security: 5

When this option is set to **On**, the Express L128FP will act as a relay agent.

### **UDP Relay/UDP Relay List**

Up to four relay destination servers can be specified in this list.

### ***UDP Relay List/Relay Address***

Write security: 3; Read security: 5

This is the IP address of the server that will receive the relay packet.

### ***UDP Relay List/UDP Port Type***

Write security: 3; Read security: 5

**Standard (def)** The following standard UDP protocols are relayed when set: DHCP, TFTP, DNS, NTP (Network Time Protocol, port 123). NBNS (NetBIOS Name Server, port 137), NBDG (NetBIOS Datagram, port 138), and BootP.

**Specified** When set, the UDP port (1 to 65535) can be specified in the UDP Port columns. (up to a maximum of three per server)

### ***UDP Relay List/UDP Ports 1, 2, and 3***

Write security: 3; Read security: 5

UDP Port 1, UDP Port 2, and UDP Port 3 are used for specifying UDP ports to be relayed. These fields only apply when **UDP Port Type** is set to **Specified**.

### **»» IP/Proxy ARP**

Write security: 4; Read security: 5

This feature allows the network portion of a group of addresses to be shared among several physical network segments. The ARP protocol itself provides a way for devices to create a mapping between physical (i.e., Ethernet) addresses and logical IP addresses. Proxy ARP makes use of this mapping feature by instructing a router to answer ARP requests as a “proxy” for the IP addresses behind one of its ports. The device which sent the ARP request will then correctly assume that it can reach the requested IP address by sending packets to the physical address that was returned to it. This technique effectively hides the fact that a network has been (further) subnetted. If this option is set to **Yes (def)**, when an ARP request is received on the Ethernet port the address is looked up in the IP routing table. If the forwarding port is not on the Ethernet port and the route is not the default route, the Express L128FP will answer the request with its own hardware address.

If set to **No**, the Express L128FP will only respond to ARP requests received for its own IP address.

## » Configuration/IPX

The IPX menu is used to set up the IPX parameters for the Express L128FP. Any general IPX-related configuration item can be found under this menu. *Figure 3-5* shows the IPX menu.

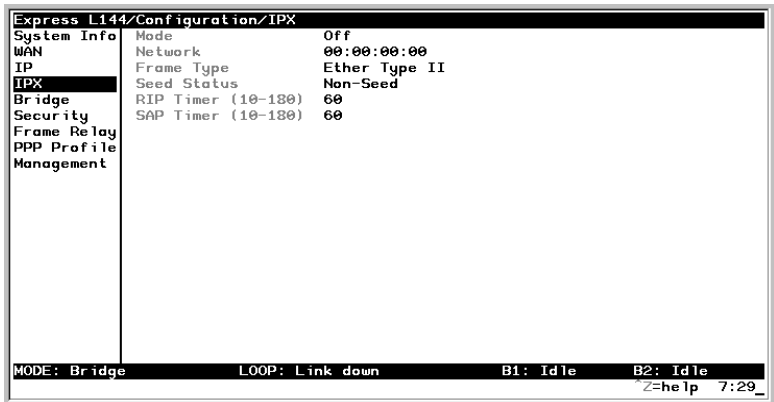


Figure 3-5. Configuration/IPX Screen

### »» IPX/Mode

Write security: 2; Read security: 5

When this option is set to **On**, the Express L128FP will route IPX. Setting it to **Off** (def) will disable all IPX functionality.

### »» IPX/Network

Write security: 2; Read security: 5

The IPX network address for the Ethernet port is set here. This is an eight-digit hexadecimal value that uniquely identifies the network segment of the Ethernet port. Accidental selection of an IPX network which is already in use on another network segment may cause hard-to-diagnose problems. IPX network numbers should be carefully tracked.

### »» IPX/Frame Type

Write security: 2; Read security: 5

The Express L128FP supports all four defined IPX frame types. The possible frame types are: **Ether Type II (def)**, **Ether 802.3 (Raw)**, **Ether 802.2**, or **Ether SNAP (802.2 SNAP)**. Only one frame type can be used at one time.

### »» IPX/Seed Status

Write security: 2; Read security: 5

The seed status defines what the Express L128FP is to do with the network information on the selected frame type during startup. There are three possible seeding selections specified:

**Seed** The Express L128FP will listen for an IPX network number being sent by another router (including Novell software routers residing on servers) on the Ethernet segment connected to this port and use this number if it exists. If it does not discover a number in use, the Express L128FP will use the configured IPX network number for the Ethernet segment.

**Non-Seed (def)** The Express L128FP will listen for an IPX network number being sent by another router (including Novell software routers residing on servers) on the Ethernet segment connected to this port and use this number if it exists. If it does not discover a number in use, the Express L128FP will wait indefinitely until a number is sent by another router on the Ethernet segment.

**Auto-Seed** The Express L128FP will listen for an IPX network number being sent by another router (including Novell software routers residing on servers) on the Ethernet segment connected to this port and use this number if it exists. If it does not discover a number in use, the Express L128FP will auto-generate a valid number using its routing tables.

**»» IPX/RIP Timer**

Write security: 3; Read security: 5

This value specifies how often the Express L128FP sends out IPX RIP packets on the network segment attached to the Ethernet port. The RIP packets sent contain routing information about the networks for which this Express L128FP is responsible. The default value is 60 seconds.

**»» IPX/SAP Timer**

Write security: 3; Read security: 5

This value specifies how often the Express L128FP sends out IPX SAP (Service Access Protocol) packets on the network segment attached to the Ethernet port. The SAP packets sent contain information about the services (such as servers, printers, etc.) for which this Express L128FP is responsible. The default value is 60 seconds.

**» Configuration/Bridge**

The Bridge menu is used to set up the bridge parameters for the Express L128FP. The bridging function runs at the Media Access Control (MAC) level which allows any protocol packets that run over Ethernet to be forwarded. Bridging can run concurrently with the IP and IPX routing. However, certain rules apply for when packets are bridged across a WAN connection. When IP routing is active, IP packets (which include ARP packets) are not bridged. When IPX routing is active, IPX packets are not bridged. Also, the WAN IP Bridge and WAN IPX Bridge menus allow the WAN connection to bridge packets to the Express L128FP but get routed as soon as they arrive at the unit. *Figure 3-6* shows the Bridge menu.



Figure 3-6. Configuration/Bridge Screen

### »» Bridge/Mode

Write security: 2; Read security: 5

When this option is set to **On** (def), the Express L128FP bridge function will be enabled. Setting it to **Off** will disable all bridge functionality.

### »» Bridge/WAN IP Bridge

When IP routing is active, the Express L128FP will allow another WAN device to bridge IP packets to it using PPP BCP. Normally, two IP routers would negotiate PPP IPCP to exchange IP packets. However, if a device can only support PPP BCP, IP packets are encapsulated by the device as bridge packets. The Express L128FP can treat the WAN IP Bridge as a virtual Ethernet port connected only to a WAN device which has negotiated PPP BCP. This menu allows the IP parameters for this virtual Ethernet to be set up.

### WAN IP Bridge/Network

Write security: 2; Read security: 5

This is the IP address of the virtual Ethernet port.



**WAN IP Bridge/Netmask**

Write security: 2; Read security: 5

This is the network mask to be applied to the virtual Ethernet port.

**WAN IP Bridge/Triggered**

Write security: 2; Read security: 5

When set to **Yes**, only IP RIP updates are sent when the routing table has changed. When set to **No** (def), updates are sent periodically.



*RIP version, method, and direction are determined by the Ethernet parameters set in the **Configuration/IP/IP Router/RIP** menu.*

**WAN IP Bridge/Proxy ARP**

If this option is set to **Yes** (def), the Express L128FP will proxy ARP on the bridge IP port. See the section *IP/Proxy ARP* on page 3-18 for an explanation of the proxy ARP function.

**»» Bridge/WAN IPX Bridge**

When IPX routing is active, the Express L128FP will allow another WAN device to bridge IPX packets to it using PPP BCP. Normally, two IPX routers would negotiate PPP IPXCP to exchange IPX packets. However, if a device can only support PPP BCP, IPX packets are encapsulated by the device as bridge packets. The Express L128FP can treat the WAN IPX Bridge as a virtual Ethernet port connected only to a WAN device which has negotiated PPP BCP. This menu allows the IPX parameters for this virtual Ethernet to be set up.

**WAN IPX Bridge/Network**

Write security: 2; Read security: 5

This is the network address of the virtual Ethernet port. See *IPX/Network* on page 3-19 for an explanation of the IPX network number.

### **WAN IPX Bridge/Frame Type**

Write security: 2; Read security: 5

This is the frame type used for the virtual Ethernet port. See *IPX/Frame Type* on page 3-20 for an explanation of the IPX frame type.

### **WAN IPX Bridge/Seed Status**

Write security: 2; Read security: 5

This is the seed status used for the virtual Ethernet port. See *IPX/Seed Status* on page 3-20 menu for an explanation of the IPX seed status.

### **WAN IPX Bridge/Triggered**

Write security: 2; Read security: 5

When set to **Yes**, only IPX RIP and SAP updates are sent when the routing or service table has changed. When set to **No** (def), updates are sent periodically.



*RIP and SAP periodic rates set for the Ethernet port (see *IPX/RIP Timer* on page 3-21 and *IPX/SAP Timer* on page 3-21) are used for the WAN IPX bridge port.*

## » Configuration/Security

The **Security** menu is used to set up the authentication parameters needed to authenticate PPP connection. Also, the filter defines are placed under this menu. *Figure 3-7* shows the Security menu.

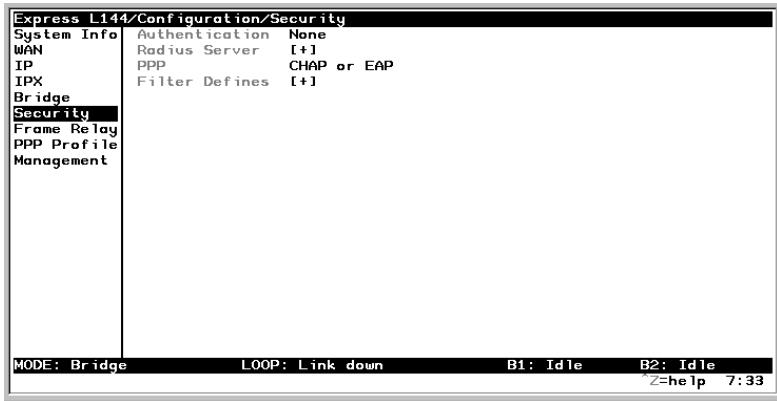


Figure 3-7. Configuration/Security Screen

### »» Security/Authentication

Write security: 1; Read security: 2

The method used for authenticating the PPP peer is selected here. The possible values are:

- None (def)** No attempt is made to authenticate the PPP peer.
- Radius** The Express L128FP will act as a RADIUS client and authenticate the PPP peer using the RADIUS server. The Radius server parameters must be set up properly for this to work.
- PPP Profile** The PPP profile is used to authenticate the PPP peer.

See *Configuration/PPP Profile* on page 3-42 for more information on authenticating.

## »» Security/Radius Server

The parameters for the radius server are configured in this menu. The RADIUS server can be used for authenticating a PPP peer (if defined under **Security/Authentication**) and for Telnet server sessions.

### **Radius Server/Primary Server**

Write security: 1; Read security: 2

This is the IP address of the first RADIUS server that the Express L128FP should attempt to communicate with when authenticating a PPP peer.

### **Radius Server/Secondary Server**

Write security: 1; Read security: 2

This is the IP address of the back-up RADIUS server that the Express L128FP should attempt to communicate with when the primary server does not respond.

### **Radius Server/UDP Port**

Write security: 1; Read security: 2

This is the UDP port that the Express L128FP should use when communicating with the RADIUS server. The default is 1645, which is the commonly used port.

### **Radius Server/Secret**

Write security: 0; Read security: 1

The RADIUS server and Express L128FP share this text string, which is used by the RADIUS sever to authenticate the Express L128FP that is the RADIUS client. The factory default is not to use a secret.

### **Radius Server/Retry Count**

Write security: 1; Read security: 2

This is the number of times the Express L128FP should send a request packet to the RADIUS server without a response before giving up. If the number of attempts to communicate with the primary server is equal to

the retry count, the secondary server (if defined) is tried. If the secondary server does not respond within the retry count, the PPP peer (or Telnet session) is not authenticated and is dropped. The default is 5.

### »» Security/PPP

Write security: 1; Read security: 2

The PPP peer can be authenticated using three standard methods: PAP (Password Authentication Protocol), CHAP (Challenge Handshake Protocol) and EAP (Extensible Authentication Protocol). The strength of the authentication is determined in the order EAP, CHAP, followed by PAP, where EAP is the strongest and PAP is the weakest. PAP is a clear-text protocol, which means it is sent over the PPP link in a readable format. Care must be taken not to allow highly sensitive passwords to become compromised using this method. CHAP and EAP use a one-way hashing algorithm which makes it virtually impossible to determine the password. EAP has other capabilities which allow more flexibility than CHAP.

The following selections are possible:

- |                               |   |
|-------------------------------|---|
| <b>PAP, CHAP or EAP (def)</b> | The Express L128FP will ask for EAP during the first PPP LCP negotiation and allow the PPP peer to negotiate down to CHAP or PAP.           |
| <b>CHAP or EAP</b>            | The Express L128FP will ask for EAP during the first PPP LCP negotiation and allow the PPP peer to negotiate down to CHAP but not PAP.      |
| <b>EAP</b>                    | The Express L128FP will only allow EAP to be negotiated. If the PPP peer is not capable of doing EAP, then the connection will not succeed. |

### »» Security/Filter Defines

The Express L128FP can filter packets based on certain parameters within the packet. The method used by the Express L128FP allows the highest flexibility for defining filters and assigning them to a profile. The filters are set up in two steps: (1) defining the packet types, and (2) adding them to a list under the PPP profile or DLCI map. See the section *DLCI Mapping/Filters* on page 3-39 for examples of how to set up

filter profiles. This menu is used to define the individual filter defines based on packet type.

### **Filter Defines /MAC Filter Defines**

Write security: 2; Read security: 3

The MAC filter is applied to bridge packets only. Bridge packets which are forwarded by the bridge functionality of the Express L128FP are defined here. Up to 32 MAC defines can be specified.

<b>Name</b>	Identifies the filter entry
<b>Src Addr</b>	48-bit MAC source address used for comparison. (hexadecimal format)
<b>Src Mask</b>	Bits in the MAC source address which are compared. (hexadecimal format)
<b>Dest Addr</b>	48-bit MAC destination address used for comparison. (hexadecimal format)
<b>Dest Mask</b>	Bits in the MAC destination address used for comparison. (hexadecimal format)
<b>MAC Type</b>	16-bit MAC type field used for comparison. (hexadecimal format)
<b>Type Msk</b>	Bits in the MAC type field used for comparison. (hexadecimal format)

### **Filter Defines /Pattern Filter Defines**

Write security: 2; Read security: 3

The pattern filter is applied to bridge packets only. That is any packet which is forwarded by the bridge functionality of the Express L128FP. Up to 32 pattern defines can be specified.

<b>Name</b>	Identifies the filter entry
<b>Offset</b>	Offset from beginning of packet of where to start the pattern comparison
<b>Pattern</b>	64 bits used for comparison. (hexadecimal format)
<b>Mask</b>	Bits in the pattern to be compared. (hexadecimal format)

**Filter Defines /IP Filter Defines**

Write security: 2; Read security: 3

The IP filter defines apply to any IP packet, whether it is routed or bridged. Up to 32 IP defines can be specified.

<b>Name</b>	Identifies the filter entry
<b>IP Src</b>	IP address compared to the source address. (dotted decimal format)
<b>Src Mask</b>	Bits which are used in the source comparison. (dotted decimal format)
<b>IP Dest</b>	IP address compared to the destination address. (dotted decimal format)
<b>Dest Mask</b>	Bits which are used in the destination comparison. (dotted decimal format)
<b>Src Port</b>	IP source port number used for comparison Range: 0 to 65535. (decimal format)
<b>Src Port Cmpr</b>	Type of comparison that is performed
<b>=</b>	means ports equal to
<b>not =</b>	means port not equal to
<b>&gt;</b>	means port greater than
<b>&lt;</b>	means port less than
<b>None</b>	means the source port is not compared
<b>Dst Port</b>	IP destination port number used for comparison Range: 0 to 65535. (decimal format)
<b>Dst Port Cmpr</b>	Type of comparison that is performed
<b>=</b>	means ports equal to
<b>not =</b>	means port not equal to
<b>&gt;</b>	means port greater than
<b>&lt;</b>	means port less than
<b>None</b>	means the destination port is not compared

<b>Proto</b>	Protocol used for comparison. Range: 0 to 255. (decimal format)
<b>Proto Cmpr</b>	Type of comparison that is performed
<b>=</b>	means protocols equal to
<b>not =</b>	means protocols not equal to
<b>&gt;</b>	means protocols greater than
<b>&lt;</b>	means protocols less than
<b>None</b>	means the protocol is not compared
<b>TCP Est</b>	
<b>Yes</b>	only when TCP established
<b>No</b>	only when TCP not established
<b>Ignore</b>	ignore TCP flags

**Filter Defines /IPX Filter Defines**

Write security: 2; Read security: 3

The IPX filter defines apply to any IPX packet whether it is routed or bridged. Also, any IPX encapsulation type will be accounted for. Up to 32 IPX defines can be specified.

<b>Name</b>	Identifies the filter entry (15 characters max)
<b>Src Net</b>	32-bit source network address
<b>Src Mask</b>	Bits in the source network address which are compared. (hexadecimal format)
<b>Dest Net</b>	32-bit destination network address
<b>Dest Mask</b>	Bits in the destination network address which are compared. (hexadecimal format)
<b>Src Socket</b>	16-bit value which is the source socket. Range: 0-65535.



<b>Src Socket Comp</b>	Type of comparison that is performed:
=	means socket equal to
<b>Not =</b>	means socket not equal to
>	means socket greater than
<	means socket less than
<b>None</b>	no comparison is done on source socket
<b>Dest Socket</b>	16-bit value which is the destination socket. Range: 0-65535.
<b>Dest Socket Comp</b>	Type of comparison that is performed:
=	means socket equal to
<b>Not =</b>	means socket not equal to
>	means socket greater than
<	means socket less than
<b>None</b>	no comparison is done on destination socket
<b>Type</b>	8-bit value which is the IPX type
<b>Type Comp</b>	Type of comparison that is performed:
=	means type equal to
<b>Not =</b>	means type not equal to
>	means type greater than
<	means type less than
<b>None</b>	no comparison is done on IPX type

## » Configuration/Frame Relay

Frame Relay is a connection-oriented service requiring circuits to be configured by your carrier to establish a physical link between two or more locations. Multiple virtual circuits (which appear as virtual point-to-point links) can be run through the same physical connection.

There are two types of virtual circuits supported in Frame Relay: Permanent Virtual Circuits (PVC) and Switched Virtual Circuit (SVC). PVCs are like dedicated point-to-point private lines. Since the physical connection is always there in the form of a leased line, call setup and tear down is done by a carrier via a network management system. SVCs require setup and tear down and are generally not available from Frame Relay carriers. Virtually all Frame Relay communications is done using PVCs. The Express L128FP supports PVCs only.

A number called the Data Link Connection Identifier (DLCI) identifies each virtual circuit within a shared physical channel.

Figure 3-8 shows the Frame Relay menu.

```

Express L144/Configuration/Frame Relay
System Info Maintenance Protocol Annex D
WAN Polling Frequency (5-30) 10
IP DLCI Mapping [+1
IPX Maintenance DLCI 901
Bridge BECN Timeout (msec) 1500
Security
Frame Relay
PPP Profile
Management

MODE: Bridge LOOP: Link down B1: Idle B2: Idle
Z=help 7:35

```

Figure 3-8. Configuration/Frame Relay Screen

**»» Frame Relay/Maintenance Protocol**

Write security: 3, Read security: 5

The Frame Relay maintenance protocol is used on the WAN port. The maintenance protocol is used to send link status and virtual circuit information between Frame Relay switches and other devices (such as routers) that communicate with them. Possible choices are listed below.

- |                      |  |
|----------------------|--|
| <b>Annex D (def)</b> | This is an ANSI standard and is the most commonly used standard in the US.   |
| <b>Annex A</b>       | This is the CCITT European standard.   |
| <b>LMI</b>           | This was developed by a vendor consortium and is also known as the “consortium” management interface specification. It is still used by some carriers in the U.S.                    |
| <b>Static</b>        | This should be selected when there is no Frame Relay switch in the circuit. The DLCIs are assigned in the DLCI Mapping and must be the same for the device it will communicate with. |

**»» Frame Relay/Polling Frequency**

Write security: 3, Read security: 5

This parameter is the interval that the Express L128FP polls the Frame Relay switch using the maintenance protocol selected above. The Express L128FP is required to poll the Frame Relay switch periodically to determine whether the link is active. The value is in seconds and ranges from 5 to 30 seconds with a default of 15 seconds.

**»» Frame Relay/DLCI Mapping**

This menu allows each DLCI to be mapped to a particular Frame Relay maintenance protocol. Each protocol parameter can be individually configured for each DLCI. By factory default, the DLCI map is empty.

When empty and a maintenance protocol other than static is used, the Express L128FP will poll the switch to determine which DLCIs are ac-

tive. These active DLCIs will attempt to determine the IP and IPX addresses on the other end of the virtual circuit using Inverse ARP (IARP). If there is a response, the network learned will be added to the router tables and the virtual circuit will be treated as an unnumbered interface. Bridge connections are made using bridge group 1.

When more than one DLCI mapping is listed, the Express L128FP will try to match the DLCIs learned from the Frame Relay switch with the DLCI values in the map. If there is a match, the protocols specified in the map are used. However, if an active DLCI is not in the list, it looks for an entry that has 0 in the DLCI field. This entry is considered the default entry to use when no match occurs. If this default entry is not present, the Express L128FP falls back to using IARP (as discussed in the previous paragraph) to determine the protocols to use with that particular virtual circuit. If a static maintenance protocol is used, at least one DLCI mapping must be specified.



*To insert a new profile, press the **I** key when over the **Num** column. A new inserted profile will always be set up with the default parameters. To copy parameters from an old profile to this newly inserted profile, use the copy (**C**) and paste (**P**) keys. Entire configuration trees can be copied with this method.*



*To delete an unused profile, use the **D** key when the cursor is over the number in the **Num** column. Once deleted, the profile is gone permanently as soon as the DLCI Mapping is saved. Items may be deleted when **DEL** appears below the status bar.*

### **DLCI Mapping/Active**

Write security: 3, Read security: 5

When this parameter is set to **Yes** (def), the mapping is used to determine the protocols used. If set to **No**, the Express L128FP will ignore the virtual circuit with this DLCI.

**DLCI Mapping/DLCI**

Write security: 3, Read security: 5

This is the DLCI associated with this virtual circuit. This value can range from 16 to 1007.

**DLCI Mapping/IP Map**

Write security: 3, Read security: 5

This menu represents the IP protocol mapping that is to take place for this DLCI.

***IP Map/Active***

Write security: 3, Read security: 5

When this is set to **Yes** (def), the Express L128FP will attempt to transport IP packets for this DLCI. A setting of **No** means that no IP traffic or route will be exchanged.

***IP Map/IARP***

Write security: 3, Read security: 5

When this is set to **Yes** (def), the Express L128FP will send Inverse ARP packets to determine the IP address on the other end of the virtual circuit. If the IARP is responded to, a route is placed in the IP route table. A setting of **No** means that the route address is to be assigned statically using the **IP Map/Far-End IP Address** parameter. The Express L128FP will always respond to Inverse ARP requests.

***IP Map/Far-End IP Address***

Write security: 3, Read security: 5

This is the IP address of the device on the other end of the virtual circuit. When this DLCI becomes active, the Express L128FP will add a route in the IP routing table.

### ***IP Map/IP Netmask***

Write security: 3, Read security: 5

The IP network mask to apply to the **Far-End IP Address** and **Link IP Address** is specified here.

### ***IP Map/Link IP Address***

Write security: 3, Read security: 5

The virtual circuit may require an IP address to be specified at this DLCI interface. This is called a numbered interface. This address is used by the Express L128FP to respond to Inverse ARP requests. If this IP address is left as 0.0.0.0, the link is treated as unnumbered and the Express L128FP responds to the Inverse ARP with its Ethernet IP address.

### ***IP Map/RIP Protocol***

Write security: 3, Read security: 5

The RIP protocol can be specified per DLCI. The possible selections are **Off** (meaning no RIP packets are listened to or sent), **V1** (def) (which is RIP version 1) or **V2** (which is RIP version 2).

### ***IP Map/RIP Method***

Write security: 3, Read security: 5

The way the RIP protocol sends out its advertisements is specified here:

<b>None</b>	All routes in the router table are advertised out this virtual circuit with no modification of the metrics.
<b>Split Horizon (def)</b>	Only routes not learned from this particular virtual circuit are advertised.
<b>Poison Reverse</b>	All routes are advertised, but the routes learned from this port are “poisoned” with an infinite metric.

**IP Map/RIP Direction**

Write security: 3, Read security: 5

This parameter allows the direction at which RIP advertisements are sent and listened to be specified.

- |                        |  |
|------------------------|--|
| <b>Tx and Rx (def)</b> | RIP advertisements are periodically transmitted and are listened to on this virtual circuit.     |
| <b>Tx Only</b>         | RIP advertisements are periodically transmitted but are not listened to on this virtual circuit. |
| <b>Rx Only</b>         | RIP is not transmitted on this virtual circuit but they are listened to.                         |

**IP Map/NAT**

The Express L128FP can perform Network Address Translation over a PVC. Setting this option to **On** will cause the Express L128FP to translate between the Ethernet addresses and the configured **Link IP Address**. Only one PVC may be used for translation at one time. If more than one IP Map is configured for NAT, the first PVC which is activated becomes the NAT port.

**DLCI Mapping/IPX Map**

This menu represents the IPX protocol mapping that is to take place for this DLCI.

**IPX Map/Active**

Write security: 3, Read security: 5

When this is set to **Yes** (def), the Express L128FP will attempt to transport IPX packets for this DLCI. A setting of **No** means that no IPX traffic or route will be exchanged.

### ***IPX Map/IARP***

Write security: 3, Read security: 5

When this is set to **Yes** (def), the Express L128FP will send Inverse ARP packets to determine the IPX network on the other end of the virtual circuit. If the IARP is responded to, a route is placed in the IPX route table. A setting of **No** means that the IPX network is to be assigned to the link statically using the IPX Map/Link Network parameter. The Express L128FP will always respond to Inverse ARP requests.

### ***IPX Map/Link Network***

Write security: 3, Read security: 5

This is the IPX network of the link or of the other device's LAN. When this DLCI becomes active, the Express L128FP will add a route to this network in the IPX routing table. This address is also used by the Express L128FP to respond to Inverse ARP requests. If this IPX address is left as 0, the link is treated as unnumbered and the Express L128FP responds to the Inverse ARP with its Ethernet IPX address.

### ***DLCI Mapping/Bridge Map***

This menu is used to permit bridging of packets over this DLCI. Each DLCI or virtual circuit must be assigned a bridge group. The bridge group treats all virtual circuits as one circuit. Bridge packets destined to be transmitted out a particular bridge group are copied and transmitted individually out each DLCI in the bridge group. However, incoming bridge packets received from one DLCI are not retransmitted out the other DLCIs in the same bridge group. Any device in the bridge group must transmit to each DLCI. This requires a fully meshed circuit, meaning each device has a virtual circuit to each other.

### ***Bridge Map/Active***

Write security: 3, Read security: 5

When this is set to **Yes** (def), the Express L128FP will bridge packets to and from this DLCI. Bridge packets are any packets that are not IP or IPX packets except when the router is turned off, in which case that



particular router's protocol packets are bridged. A setting of **No** means that no bridging will occur.

### ***Bridge Map/Bridge Group***

Write security: 3, Read security: 5

The bridge group that this DLCI is part of is specified here as **Group 1** or **Group 2**. These groups correspond to the spanning tree protocols Bridge Group 1 and Bridge Group 2.

### **DLCI Mapping/Filters**

The Express L128FP can block packets in and out of a PVC port by use of the filters. They are set up in two steps: 1) define the types of packets that would be of interest in the **Configuration/Security/Filter Defines** menu, and 2) set up the filter type and combination of defines that will cause a packet block.

### ***Filters/In from PVC***

Write security: 2; Read security: 5

The packets which come into the Express L128FP via this PVC can be filtered in three ways:

- |                       |  |
|-----------------------|--|
| <b>Disabled (def)</b> | Turns off packet input filtering. No incoming packets from this PVC are blocked.                               |
| <b>Block All</b>      | All incoming packets from this PVC are blocked except as defined in the <b>Filters/In Exceptions</b> list.     |
| <b>Forward All</b>    | All incoming packets from this PVC are not blocked except as defined in the <b>Filters/In Exceptions</b> list. |

**Filters/In Exceptions**

Write security: 2; Read security: 5

This is a list of up to 32 filter entries which can be combined using the operations field. The operations are performed in the order they appear on the list.

<b>Active</b>	Turns this entry active when set to <b>On</b> .
<b>Type</b>	Selects the filter define list to reference:
<b>MAC</b>	from the <b>Configuration/Security/Filter Defines/MAC Filter Defines</b> list.
<b>Pattern</b>	from the <b>Configuration/Security/Filter Defines/Pattern Filter Defines</b> list.
<b>IP</b>	from the <b>Configuration/Security/Filter Defines/IP Filter Defines</b> list.
<b>IPX</b>	from the <b>Configuration/Security/Filter Defines/IPX Filter Defines</b> list.
<b>Filter List Name</b>	Selects between filters defined in the list.
<b>Next Oper</b>	The next operation to use to combine with the next filter in the list:
<b>END</b>	the last filter to combination.
<b>AND</b>	logically AND this filter with the next filter in the list
<b>OR</b>	logically OR this filter with the next filter in the list.

***Filters/Out to PVC***

Write security: 2; Read security: 5

The packets which transmit out this PVC from the Express L128FP can be filtered in three ways:

- Disabled (def)** Turns off packet output filtering. No outgoing packets to this PVC are blocked.
- Block All** All outgoing packets to this PVC are blocked except as defined in the **Filters/Out Exceptions** list.
- Forward All** All outgoing packets to this PVC are not blocked except as defined in the **Filters/Out Exceptions** list.

***Filters/Out Exceptions***

Write security: 2; Read security: 5

This is a list of up to 32 filter entries. The setup is exactly the same as the **Filter/In Exceptions** list.

***Maintenance DLCI***

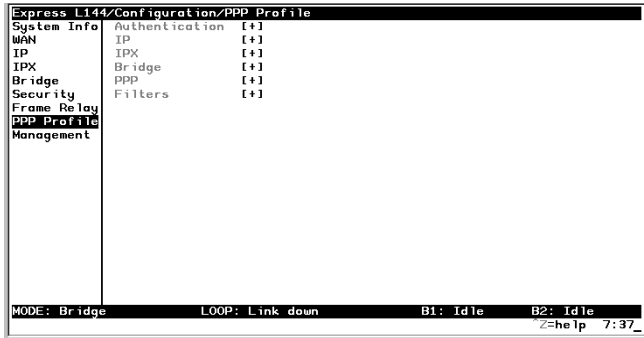
The Express L128FP can be configured from the WAN without having to preset a DLCI mapping or IP address. This value is the DLCI number used to open an IP session by the Express L128FP. Any IP packet arriving from the PVC is assumed to be for the Express L128FP's IP stack. The destination address in the packet is assigned as the PVC's link IP address. The source address is used to add a host route in the routing table. The default is 901, but any legal DLCI number can be used.

***BECN Timeout***

This value is expressed in milliseconds and represents the amount of time the Express L128FP will stop transmitting over a PVC which received a packet with the BECN bit set. The default is 1.5 seconds.

» **Configuration/PPP Profile**

The Express L128FP uses the PPP profile to specify the profile used when connected using PPP. *Figure 3-9* shows the PPP profile menu.



**Figure 3-9. Configuration/PPP Profile Screen**

»» **PPP Profile/Authentication**

The authentication menu contains the required parameters for the authentication of the PPP peer and for being authenticated by the PPP peer. Authentication is applied between the Express L128FP and the PPP peer as follows:

**Authentication/Tx Method**

Write security: 2; Read security: 3

This parameter specifies how the Express L128FP is to be authenticated by the PPP peer. There are four possible selections. See *Security/PPP* on page 3-27 for an explanation of the three PPP standard authentication types.

- None (def)**      The connection will not allow the PPP peer to authenticate it.
- PAP, CHAP or EAP**      The connection can be authenticated using PAP, CHAP or EAP.

- CHAP or EAP** The connection can be authenticated using CHAP or EAP only.
- EAP** The connection will only allow authentication by the peer using EAP.

**Authentication/Tx Username**

Write security: 1; Read security: 3

This is the username that is used when being authenticated by the PPP peer.

**Authentication/Tx Password**

Write security: 0; Read security: 1

This is the password or secret that is used when being authenticated by the PPP peer.

**Authentication/Rx Username**

Write security: 1; Read security: 3

This is the username used to authenticate the PPP peer.

**Authentication/Rx Password**

Write security: 0; Read security: 1

This is the password or secret that is used to authenticate the PPP peer.

**»» PPP Profile/IP**

The IP menu contains the parameters for exchanging IP data with the PPP peer.

**IP/Mode**

Write security: 3; Read security: 5

Setting to **On** will permit this connection profile to negotiate PPP IPCP with the PPP peer for exchanging of IP packets. The default is **Off**.

### **IP/NAT**

Write security: 3; Read security: 5

The Express L128FP can perform Network Address Translation. This feature is most widely used when connecting to the Internet. The Ethernet network can consist of private network numbers. When this profile is connected, all IP addresses on the Ethernet side are translated into the one real IP address negotiated with the PPP peer (ISP). Multiple stations on the Ethernet side can access the Internet simultaneously. See the section *IP/NAT* on page 3-15 for more global options. Setting this option to **On** will cause the Express L128FP to perform NAT. In the **Off** (def) position, the unit will route across the connection normally.

### **IP/Route**

The IP parameters are configured in this menu. Usually the Express L128FP will automatically discover the PPP peer's networks using PPP IPCP and/or RIP.

### **Route/IP/Net**

Write security: 3; Read security: 5

The PPP peer's IP address or network can be set here, if known. Leaving this at 0.0.0.0 means that the Express L128FP will determine the PPP peer's IP and network using the PPP IPCP.

### **Route/Netmask**

Write security: 3; Read security: 5

This network mask is applied to the **IP/NET** address for determining the PPP peer's network. If left as 0.0.0.0, a standard network mask is used.

### **Route/Force IP**

Write security: 3; Read security: 5

When set to **Yes**, the Express L128FP will force the PPP peer to use the IP address in the **IP/Net** for this profile as its WAN IP address. Normally this is set in the **No** (def) position.

### ***Link IP***

This is the IP address that is assigned to the PPP link when using numbered links. By default, no address is assigned and the PPP link is unnumbered.

### **IP/RIP**

The RIP parameters can be adjusted from their defaults under this menu.

#### ***RIP/Mode***

Write security: 3; Read security: 5

The Express L128FP performs RIP over the WAN connection when this is set to **On**.

#### ***RIP/Protocol***

Write security: 3; Read security: 5

The Express L128FP performs version 1, **V1** (def), or version 2, **V2**, of RIP on this WAN connection.

#### ***RIP/Method***

Write security: 3; Read security: 5

<b>Split Horizon</b>	Only routes not learned on the WAN connection are advertised.
<b>Poison Reverse (def)</b>	All routes are advertised, including routes learned from the WAN connection. These routes are poisoned.
<b>None</b>	All routes are advertised, including routes learned from the WAN connection. No attempt is made to poison these routes.

### ***RIP/Direction***

Write security: 3; Read security: 5

- |                        |   |
|------------------------|---|
| <b>Tx and Rx (def)</b> | RIP advertisements are transmitted and listened to on the WAN connection. |
| <b>Tx only</b>         | RIP advertisements are transmitted and not listened to.                   |
| <b>Rx only</b>         | RIP advertisements are listened to but not transmitted.                   |

### ***RIP/Triggered***

Write security: 3; Read security: 5

When set to **Yes**, only IP RIP updates are sent when the routing table has changed and learned routes are not “aged.” When set to **No** (def), updates are sent periodically.

### **»» PPP Profile/IPX**

The IPX menu contains the parameters for exchanging IPX data with the PPP peer.

### **IPX/Mode**

Write security: 3; Read security: 5

Setting to **On** will permit this connection profile to negotiate PPP IPX-CP with the PPP peer for exchanging of IPX packets.

### **IPX/Remote Network**

Write security: 3; Read security: 5

A non-zero value in this remote network number will allow the Express L128FP to add a route to the PPP peer’s network to the routing table.

The Express L128FP normally will treat the WAN network as an un-numbered link. This is usually referred to as being a “half-router.” However, a PPP peer which wants to assign a network address to the WAN link can do so, in which case the Express L128FP will go into “full-router” mode.



**IPX/Triggered**

Write security: 3; Read security: 5

When set to **Yes**, only IPX RIP and SAP updates are sent when the routing or service table has changed and learned routes are not “aged.” When set to **No** (def), updates are sent periodically based on the RIP and SAP timers set in **Configuration/IPX/RIP Timer** and **Configuration/IPX/SAP Timer**.

**IPX/Type 20 Packets**

Write security: 3; Read security: 5

For certain protocol implementations, like NetBIOS, to function in the NetWare environment, routes must allow a broadcast packet to be propagated throughout the IPX networks. The Type 20 IPX packet is used specifically for this purpose. This causes special handling of this packet by the Express L128FP. When a router receives this type of packet, it rebroadcasts it across all interfaces except the one it is received on and includes the network number of that interface in the data portion of the packet. The IPX Router Specification from Novell notes that Type 20 packets should not be propagated across slower links with bandwidths of less than 1Mbps (like ISDN). However, when set to **Pass** (def), the Express L128FP will allow these packets to propagate over the WAN connection. This facilitates dial-on-demand applications. When set to **Block**, all Type 20 packets are not propagated across the WAN connection.

**»» PPP Profile/Bridge**

The Bridge menu contains the parameters needed for exchanging bridged packets with the PPP peer.

**Bridge/Mode**

Write security: 3; Read security: 5

When set to **On** (def), the Express L128FP will attempt to negotiate PPP BCP with the PPP peer. Bridging can be used even in route mode only if the PPP peer cannot support certain PPP protocols for that particular routing protocol. See *Bridge/WAN IP Bridge* on page 3-22 and *Bridge/WAN IPX Bridge* on page 3-23 for further details.

## »» **PPP Profile/PPP**

The Express L128FP supports the IETF standards for the Point-to-Point Protocol. The PPP state machine running in the Express L128FP can be fine-tuned to support many applications that can be employed. The configurable items under this menu can be changed from their default values for special cases.

### **PPP/VJ Compression**

Write security: 3; Read security: 5

When this item is set to **On**, the Express L128FP will perform TCP/IP header compression known as Van Jacobson compression to the PPP peer. Normally, this is not necessary over ISDN connections and can be set to **Off** (def) to disable it.

### **PPP/Max Config**

Write security: 3; Read security: 5

This value is the number of unanswered configuration-requests that should be transmitted before giving up on a call. The possible values are 5, 10 (def), 15 and 20.

### **PPP/Max Timer**

Write security: 3; Read security: 5

This value is the number of seconds to wait between unanswered configuration-requests. The possible values are 1 sec, 2 secs (def), 3 secs, 5 secs and 10 secs.

### **PPP/Max Failure**

Write security: 3; Read security: 5

Due to the nature of PPP, configuration options may not be agreed upon between two PPP peers. This value is the number of configuration-naks that should occur before an option is configuration-rejected. This allows a connection to succeed that might otherwise fail. The possible values are 5 (def), 10, 15 and 20.

**»» PPP Profile/Filters**

The Express L128FP can block packets in and out of a WAN port by use of the filters. They are set up in two steps: 1) define the types of packets that would be of interest in the **Configuration/Security/Filter Defines** menu, and 2) set up the filter type and combination of defines that will cause a packet block.

**Filters/WAN-to-LAN (In)**

Write security: 2; Read security: 5

The packets which come into the Express L128FP can be filtered in three ways:

- Disabled (def)** Turns off packet input filtering. No incoming packets are blocked.
- Block All** All incoming packets from the WAN are blocked except as defined in the **Filters/In Exceptions** list.
- Forward All** All incoming packets from the WAN are not blocked except as defined in the **Filters/In Exceptions** list.

**Filters/In Exceptions**

Write security: 2; Read security: 5

This is a list of up to 32 filter entries which can be combined using the operations field. The operations are performed in the order they appear on the list.

<b>Active</b>	Turns this entry active when set to <b>On</b> .
<b>Type</b>	Selects the filter define list to reference:
<b>MAC</b>	from the <b>Configuration/Security/Filter Defines/MAC Filter Defines</b> list.
<b>Pattern</b>	from the <b>Configuration/Security/Filter Defines/Pattern Filter Defines</b> list.
<b>IP</b>	from the <b>Configuration/Security/Filter Defines/IP Filter Defines</b> list.
<b>IPX</b>	from the <b>Configuration/Security/Filter Defines/IPX Filter Defines</b> list.
<b>Filter List Name</b>	Selects between filters defined in the list.
<b>Next Oper</b>	The next operation to use to combine with the next filter in the list:
<b>END</b>	the last filter to combination.
<b>AND</b>	logically AND this filter with the next filter in the list.
<b>OR</b>	logically OR this filter with the next filter in the list.

### **Filters/LAN-to-WAN (Out)**

Write security: 2; Read security: 5

The packets which come out toward the WAN from the Express L128FP can be filtered in three ways:

- Disabled (def)** Turns off packet output filtering. No outgoing packets are blocked.
- Block All** All outgoing packets to the WAN are blocked except as defined in the **Filters/Out Exceptions** list.
- Forward All** All outgoing packets to the WAN are not blocked except as defined in the **Filters/Out Exceptions** list.

### **Filters/Out Exceptions**

Write security: 2; Read security: 5

This is a list of up to 32 filter entries. The setup is exactly the same as the **Filter/In Exceptions** list.

## » Configuration/Management

The Express L128FP can be managed using Telnet, Simple Network Management Protocol (SNMP), or the maintenance port. See *SNMP* on page C-1 for a description of the MIBs supported by the Express L128FP. Each of the three methods can be protected using authentication. *Figure 3-10* shows the Configuration/Management menu.

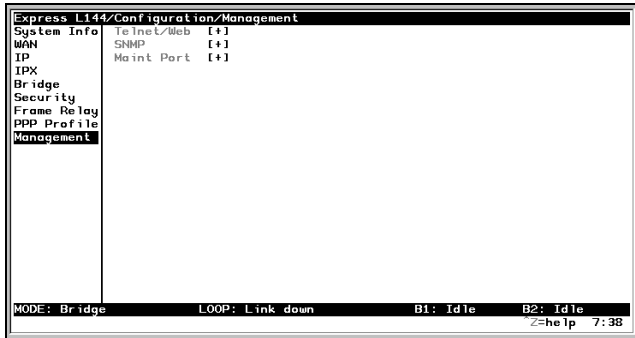


Figure 3-10. Configuration/Management Screen

### »» Management/Telnet/Web

Any Telnet client application can bring up a session to the Express L128FP's Telnet server using the standard Telnet TCP port. Only one session is supported at a time. All sessions require a user name and password.

#### Telnet/Web/Server Access

Write security: 2; Read security: 5

This option must be set to **On** (def) to access the Express L128FP via Telnet or via a web browser. Turning it **Off** means that access is denied.

#### Telnet/Web/User List

Up to four users can be configured for access to the Express L128FP. Each user can be assigned a privilege and time out.

### ***User List/Name***

Write security: 1; Read security: 3

A text string of the user name for this session.

### ***User List/Authen Method***

Write security: 1; Read security: 3

The user can be authenticated in two ways:

- Password**    The Password field is used to authenticate the user.
- Radius**        The Radius client is used for authenticating the user.

### ***User List/Password***

Write security: 0; Read security: 3

When the authenticating method is password, this text string is used for the password.

### ***User List/Idle Time***

Write security: 1; Read security: 3

When set to non-zero, the session is automatically logged out when no activity occurs for this amount of time. The range is 0 to 255 and is in minutes. The default is 10 minutes, and a setting of 0 will never time-out the session. When a timeout occurs during an edit session, all changes are saved.

### ***User List/Level***

Write security: 0; Read security: 1

This is the security level privilege that is assigned for this user. See *Security Levels* on page 3-7 for an explanation of what those levels imply. Level 0 is the default.

## »» Management/SNMP

The Express L128FP is an SNMP agent. It can respond to Get-Requests, Set-Requests, and generate traps. These two lists set up the manager, communities, and levels. See *SNMP* on page C-1 for more information on SNMP.

### **SNMP Access**

Write security: 3; Read security: 5

When set to **No**, SNMP access is denied. When set to **On** (def), the Express L128FP will respond to SNMP managers based on the following lists.

### **SNMP/Communities**

This list is used to set up to eight SNMP communities' names that the Express L128FP will allow. Factory default sets the community "public" with "Get" privileges.

#### ***Communities/Name***

Write security: 1; Read security: 3

This is a text string for the community name.

#### ***Communities/Privilege***

Write security: 1; Read security: 3

The access for this manager can be assigned three levels.

- |                |   |
|----------------|---|
| <b>None</b>    | No access is allowed for this community or manager. |
| <b>Get</b>     | Manager can only read items.                        |
| <b>Get/Set</b> | Manager can read and set items.                     |



### ***Communities/Manager IP***

Write security: 1; Read security: 3

This is the IP address of SNMP manager. If set to 0.0.0.0, any SNMP manager can access the Express L128FP for this community.

### **SNMP/Traps**

The Express L128FP can generate SNMP traps. See *SNMP* on page C-1 for trap types supported. This list allows up to four managers to be listed to receive traps.

### ***Traps/Manager Name***

Write security: 2; Read security: 4

This is the text string describing the name of the entry. It is intended for easy reference and has no bearing on the SNMP trap function.

### ***Traps/Manager IP***

Write security: 2; Read security: 4

This is the IP address of the manager that is to receive the traps.

### **»» Management/Maint Port**

The Express L128FP has an EIA-232 connector on the back of the unit. The setup for that port is under this menu.

### **Maint Port/Password Protect**

Write security: 0; Read security: 1

When set to **No**, the maintenance port is not password protected. When **On** (def), the Express L128FP will prompt for a password upon startup.

### **Maint Port/Password**

Write security: 0; Read security: 1

This is the text string that is used for comparison when password protecting the maintenance port. By default, no password is entered.



*The security level for the maintenance port is always set to 0. This gives full access to all menus.*

### **Maint Port/Baud Rate**

Write security: 5; Read security: 5

This is the asynchronous rate that the maintenance port will run. The possible values are 300, 1200, 2400, 4800, 9600 (def), 19200, 38400, 57600, 115200.

### **Maint Port/Data Bits**

Write security: 5; Read security: 5

This is the asynchronous bit rate that the maintenance port will run. The possible values are 7 or 8 (def) bits.

### **Maint Port/Parity**

Write security: 5; Read security: 5

This is the asynchronous parity that the maintenance port will run. The possible values are **None** (def), **Odd**, or **Even**.

### **Maint Port/Stop Bits**

Write security: 5; Read security: 5

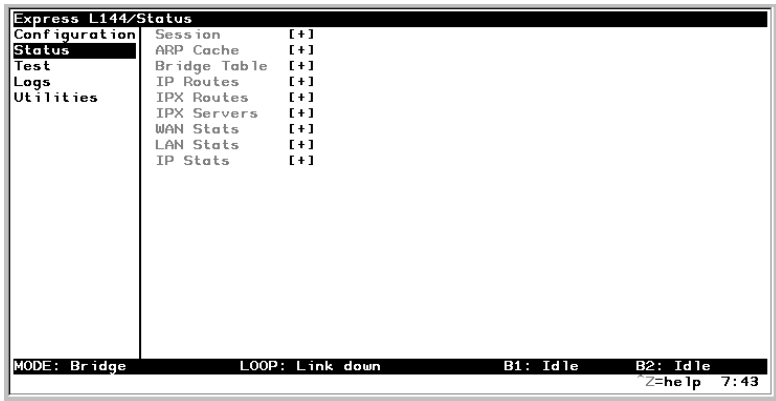
This is the stop bit used for the maintenance port. The possible values are 1 (def), 1.5 or 2.

## **» Configuration/Terminal Mode**

This is an activator which places the Express L128FP terminal session into a command prompt mode. All menu options are accessible during this mode. See *Terminal Mode Commands* on page E-1 for the command structure and command list. Type **exit** to leave the terminal mode and return to the menus.

## > STATUS MENU

The Express L128FP's Status menu contains comprehensive status and diagnostic information used in verifying configuration and identifying problems. The menus are divided into protocol types and sessions. *Figure 3-11* shows the Status menu.



**Figure 3-11. Status Screen**

### » Status/Sessions

This menu contains the current status of all sessions and spanning tree ports.

#### »» Sessions/PPP Session

Read security: 5

This menu reflects the results of PPP negotiations, user name, time connected, and data rates for the session.

#### PPP Links

Reflects LCP layer active

#### BCP

Shows UP if PPP Bridge Control Protocol has negotiated successfully

<b>IPCP</b>	Shows UP if PPP IP Control Protocol has negotiated successfully
<b>IPXCP</b>	Shows UP if PPP IPX Control Protocol has negotiated successfully
<b>Up Time</b>	Displays how long the call has been connected
<b>Tx Pkts</b>	Number of packets transmitted
<b>Rx Pkts</b>	Number of packets received
<b>Tx Bytes</b>	Number of bytes transmitted
<b>Rx Bytes</b>	Number of bytes received
<b>Tx Rate</b>	Current application data transmission rate
<b>Rx Rate</b>	Current application data reception rate

»» **Sessions/Frame Relay**

**Frame Relay/Port**

Shows Frame Relay statistics for the WAN port.

<b>Port Index</b>	Always displays 0
<b>Signal State</b>	Displays “up” when the Express L128FP is communicating with the Frame Relay switch; otherwise displays “down”
<b>Tx Frames</b>	Total packets transmitted out
<b>Rx Frames</b>	Total packets received from port
<b>Tx Bytes</b>	Total bytes transmitted out port
<b>Rx Bytes</b>	Total bytes received from port
<b>Tx Throughput</b>	Current transmit rate for port
<b>Rx Throughput</b>	Current receive rate for port
<b>Signal Tx Frames</b>	Number of Frame Relay signalling packets transmitted out port
<b>Signal Rx Frames</b>	Number of Frame Relay signalling packets received from port

<b>Drop Unknown DLCI</b>	Number of frames received that were not associated with any known PVC
<b>Drop Invalid DLCI</b>	Number of frames received that had illegal DLCIs

### Frame Relay/DLCI Table

The status of all virtual circuits is displayed here.

<b>DLCI</b>	The DLCI that is associated with this virtual circuit.
<b>State</b>	The state of the virtual circuit:
<b>Inactive</b>	means the circuit exists but has been deactivated by the Frame Relay switch.
<b>Exists</b>	means the circuit exists at this point and should be activated soon.
<b>Active</b>	means the circuit is fully active.
<b>Off</b>	means the circuit has been turned off by the DLCI mapping active selection.
<b>Tx Frames</b>	Number of Frame Relay packets that have been transmitted via this DLCI.
<b>Rx Frames</b>	Number of Frame Relay packets that have been received via this DLCI.
<b>Tx Bytes</b>	Number of Frame Relay bytes that have been transmitted via this DLCI.
<b>Rx Bytes</b>	Number of Frame Relay bytes that have been received via this DLCI.
<b>IP Sublfc</b>	The IP router port assigned for this DLCI. Possible ports are fr0, fr1, ... , fr9. None means that this DLCI not used for routing IP.
<b>IPX Sublfc</b>	The IPX router port assigned for this DLCI. Possible ports are fr0, fr1, ... , fr9. None means that this DLCI not used for routing IPX.
<b>Bridge Group</b>	The bridge group that this DLCI belongs to (Group 1 or Group 2). None means that this DLCI is not used for bridging.

<b>Tx Throughput</b>	Current transmit rate of this DLCI
<b>Rx Throughput</b>	Current receive rate of this DLCI
<b>De Count</b>	Number of packets received on this DLCI with the De bit set
<b>Cr Count</b>	Number of packets received on this DLCI with the Cr bit set
<b>Beqn Count</b>	Number of packets received on this DLCI with the Beqn bit set
<b>Fecn Count</b>	Number of packets received on this DLCI with the Fecn bit set

### »» Sessions/Spanning Tree

Read security: 5

When Bridge mode and Spanning Tree mode are active, this reflects the current state of the LAN and WAN ports. The following can appear:

<b>Off</b>	Appears when Spanning Tree mode is disabled
<b>Disabled</b>	Port is not connected (for WAN) or disabled in configuration
<b>Listening</b>	Port is in the listening state
<b>Learning</b>	Port is in the learning state
<b>Forwarding</b>	Port is in the forwarding state with the following possible properties: <ul style="list-style-type: none"><li><b>root</b> is the root port</li><li><b>designated</b> is designated port</li></ul>
<b>Blocking</b>	Port is in the blocked state

### » Status/ARP Cache

Read security: 5

This lists the contents of the Express L128FP's ARP table. All resolved cache entries time out after 20 minutes. Unresolved entries time out in 3 minutes.

»» **ARP Cache/IP Address**

IP address used for resolving MAC address

»» **ARP Cache /MAC Address**

Ethernet address resolved (0=no resolution)

»» **ARP Cache/Time**

Minutes since entry was first entered

» **Status/Bridge Table**

Read security: 5

This lists the contents of the Express L128FP's bridge table.

»» **Bridge Cache/MAC Address**

Ethernet address for device learned

»» **Bridge Cache/Port**

Port device learned from: **LAN**, **WAN0**, or **WAN1**. **WAN0** and **WAN1** represent Bridge Group 1 and Bridge Group 2, respectively.

»» **Bridge Cache/TTL**

Seconds until address is removed from table

» **Status/IP Routes**

Read security: 5

This lists the contents of the Express L128FP's IP router table.

»» **IP Routes /IP Address**

Network or host destination address

»» **IP Routes /Netmask**

Network mask applied to the destination address

»» **IP Routes /Gateway**

Host or router to receive this packet

»» **IP Routes /Port**

Port gateway is located on:

<b>local</b>	sent directly to the Express L128FP router
<b>eth0</b>	Express L128FP's ethernet port
<b>wan0</b>	Express L128FP's first PPP bundle
<b>fr 0 . . . fr 9</b>	Express L128FP is connected up to 10 DLCIs

»» **IP Routes /Use**

Number of times the Express L128FP has referenced the route

»» **IP Routes/Flags**

Important tags associated with this route entry

- H** route is a host route
- G** route is a gateway route
- D** route learned dynamically from RIP
- I** route learned from an ICMP redirect
- P** route is private and is not advertised with RIP
- T** route is to a triggered port (updates only when table changes)

»» **IP Routes/Hops**

Number of routers that must go through to get to destination. Ranges from 0-15 or 16 for infinite (can't get there from here).



**»» IP Routes/TTL**

Seconds until address is removed from table or “zombied.” Value of 999 means route is static.

**» Status/IPX Routes**

Read security: 5

This lists the contents of the Express L128FP’s IPX router table.

**»» IPX Routes /Network**

Network destination address.

**»» IPX Routes /Gateway**

Node or Ethernet address of gateway to receive this packet.

**»» IPX Routes /Port**

Port gateway is located on

<b>local</b>	sent directly to the Express L128FP router
<b>eth0</b>	Express L128FP’s ethernet port
<b>wan0</b>	Express L128FP’s first PPP bundle
<b>fr 0 . . . fr 9</b>	Express L128FP is connected up to 10 DLCIs

**»» IPX Routes/Use**

Number of times the Express L128FP has referenced the route.

**»» IPX Routes/Hops**

Number of routers that must go through to get to destination. Ranges from 0-15 or 16 for infinite (can’t get there from here).

»» **IPX Routes/Ticks**

Router determined value for representing time packets take to reach the network destination. One tick is equivalent to one-eighteenth of a second.

»» **IPX Routes/TTL**

Seconds until address is removed from table. Value of 999 means route is static.

» **Status/IPX Servers**

Read security: 5

This lists the contents of the Express L128FP's IPX server table.

»» **IPX Servers/Type**

The server type

»» **IPX Servers/Name**

The server name

»» **IPX Servers/Network**

The server network address

»» **IPX Servers /Address**

The servers node address

»» **IPX Servers/Socket**

The servers socket address

»» **IPX Servers/Hops**

Number of routers that must go through to get to server. Ranges from 0-15 or 16 for infinite.

## »» IPX Servers/TTL

Seconds until address is removed from table. Value of 999 means server is static.

## » Status/WAN Stats

Read security: 5

This menu contains generic WAN statistics on HDLC hardware port.

### HDLC Port

<b>Tx Bytes</b>	total number of raw bytes sent out HDLC port 1
<b>Rx Bytes</b>	total number of raw bytes received in HDLC port 1
<b>Rx CRCs</b>	total number of CRC errors detected on HDLC port 1
<b>Clear Counts</b>	When activated, clears all WAN stat counts

## » Status/LAN Stats

Read security: 5

This menu contains statistics for the Ethernet port.

<b>Tx Packets</b>	Packets transmitted out the Ethernet port
<b>Rx Packets</b>	Packets received from the Ethernet port
<b>Tx Errors</b>	Total transmit errors encountered on Ethernet port
<b>Single Collisions</b>	total single collisions before successful transmission
<b>Multiple Collisions</b>	total multiple collisions before successful transmission
<b>Excessive Collisions</b>	total collisions that resulted in packet being dropped
<b>Deferred Transmissions</b>	total packets deferred due to collisions
<b>Carrier Sense Errors</b>	total carrier sense errors encountered (no link integrity)

<b>Rx Errors</b>	Total packets received in error and dropped
<b>CRCs</b>	total packets detected with CRC errors
<b>Giants</b>	total packets received that were greater than 1518 bytes
<b>Runts</b>	total packets received that were less than 64 bytes
<b>Rx Collisions</b>	total collision occurred during reception
<b>Clear Counts</b>	When activated, clears all LAN Stat counts.

### » **Status/IP Stats**

Read security: 5

This menu contains IP statistics that can be useful when diagnosing problems. All are taken from the SNMP MIB-2 variables.

- Active TCP connections
- Bad header packets
- Bad IP addresses
- Bad protocol discards
- Clear Counts - clears all IP stats
- Datagrams discarded
- Default TTL
- Disassembled fragments
- Discarded routing entries
- Errorfree discards
- Failed fragments
- ICMP messages received
- ICMP messages sent
- ICMP packet errors
- ICMP redirected messages
- ICMP specif if errors
- ICMP timeouts received

IP datagrams reassembled  
IP datagrams received  
IP datagrams sent  
IP reassembly failures  
IP reassembly timeout  
No application at dest. port  
Routeless discards  
Sent datagrams to upper layers  
Successful fragments  
TCP current connections  
TCP failed attempts  
TCP passive connections  
TCP segments received  
TCP segments sent  
Total forwarded datagrams  
Total IP fragments  
Total TCP resets  
Total TCP retransmits  
UDP bad packets  
UDP datagrams received  
UDP datagrams sent

## > TEST MENU

The Express L128FP's Test menu contains built-in tests that can be used to diagnose problems. *Figure 3-12* shows the Test menu screen.

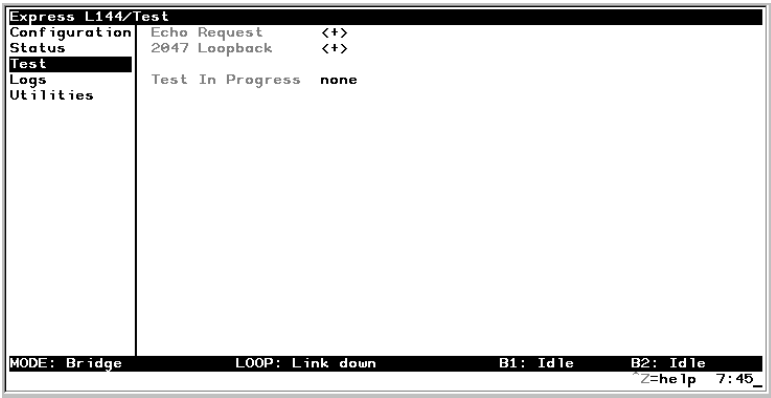


Figure 3-12. Test Screen

The following tests can be run:

### » Test Menu/Echo Request

Write security: 4, Read security: 5

When activated, the echo request test will begin sending continuous PPP echo request packets to any open LCP ports. Results are displayed on the screen. This is not used in the Frame Relay mode.

## > LOGS MENU

The Logs menu contain logs displaying important information about the running condition of the Express L128FP. The logs can be set to capture diagnostics of error conditions only by way of a log level. The levels are divided up as follows:

- level 0** Fatal event (causes reset)
- level 1** Critical event
- level 2** Error event
- level 3** Warning event
- level 4** Notify event
- level 5** Informational event
- level 6** Debugging event

Figure 3-13 shows the Logs menu. The three logs available are listed after the figure.



Figure 3-13. Logs Screen

### » Logs/Sys log Host

Set this to the IP address or domain name (if DNS configured) of the sys log host device. All log events are sent to this device.

## » **Logs/PPP Log**

Information pertaining to the PPP negotiation and authentication will be logged here.

### »» **PPP Log/Active**

When set to **Yes** (def), PPP events below or equal to the log level are logged into the log.

### »» **PPP Log/Wrap**

When set to **Yes** (def), new PPP events will overwrite old PPP events when the log is full. All logging will stop when the log is full and set to **No**.

### »» **PPP Log/Level**

In order to log events, they must be at or below this level. Range is 0 to 6. The default is 3.

### »» **PPP Log/View**

This menu displays the log list. The fields are as follows:

<b>Date/Time</b>	Date and time event occurred.
<b>Level</b>	Level associated with this event (0-6).
<b>Message</b>	Text message for this event. If message is too long to fit on the line, another event appears below it continuing the message.

### »» **PPP Log/Clear**

This clears the log when activated.

## » **Logs/Connection Log**

Information pertaining to the connection over the IDSL link.



### »» Connection Log/Active

When set to **Yes** (def), connection events below or equal to the log level are logged into the log.

### »» Connection Log/Wrap

When set to **Yes** (def), new connection events will overwrite old connection events when the log is full. All logging will stop when the log is full and set to **No**.

### »» Connection Log/Level

To log events, they must be at or below this level. Range is 0 to 6. The default is 3.

### »» Connection Log/View

This menu displays the log list. The fields are as follows:

<b>Date/Time</b>	Date and time event occurred.
<b>Level</b>	Level associated with this event (0-6).
<b>Message</b>	Text message for this event. If message is too long to fit on the line, another event appears below it continuing the message.

### »» Connection Log/Clear

This clears the log when activated.

### » Logs/Network Log

Information pertaining to the routing protocols is placed in this log.

### »» Network Log/Active

When set to **Yes** (def), call events below or equal to the log level are logged into the log.

»» **Network Log/Wrap**

When set to **Yes** (def), new Network events will overwrite old Network events when the log is full. All logging will stop when the log is full and set to **No**.

»» **Network Log/Level**

To log events, they must be at or below this level. Range is 0 to 6. The default is 3.

»» **Network Log/View**

This menu displays the log list. The fields are as follows:

<b>Date/Time</b>	Date and time event occurred.
<b>Level</b>	Level associated with this event (0-6).
<b>Message</b>	Text message for this event. If message is too long to fit on the line, another event appears below it continuing the message.

»» **Network Log/Clear**

This clears the log when activated.

## > UTILITIES MENU

The Express L128FP has utilities embedded in it to help in managing and testing the network and to facilitate software upgrades. *Figure 3-14* shows the Utilities menu.

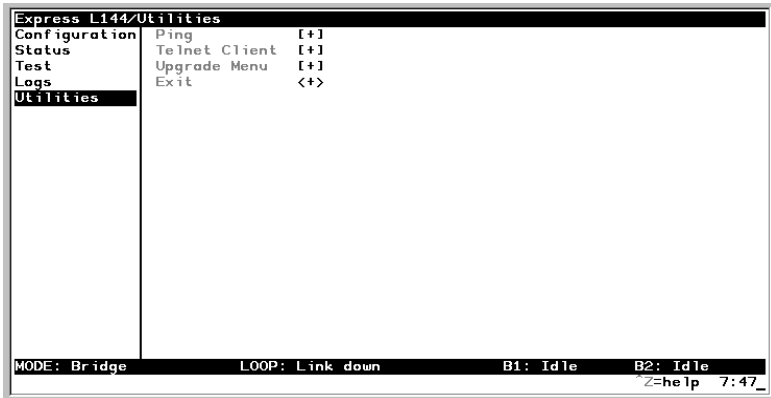


Figure 3-14. Utilities Screen

### » Utilities/Ping

Write security: 4; Read security: 5

The ping menu is used to send ICMP ping messages to hosts. The following items are under this menu:

<b>Start/Stop</b>	Activator to start and cancel a ping test.
<b>Host Address</b>	IP address or domain name (if DNS is configured) of device to receive the ping
<b>Size</b>	Total size of ping to send. Range is 40 (def) to 1500 bytes.
<b># of Packets</b>	Total packets to send every two seconds
<b># of Transmits</b>	Total packets sent (read only)
<b># of Receives</b>	Total packets received (read only)
<b>% Loss</b>	Percentage loss based on ping returned form host (read only)

### » **Utilities/Telnet Client**

Write security: 4; Read security: 5

The Telnet menu can be used to activate the Telnet client function in the Express L128FP.

- Host** IP address or domain name (if DNS is configured) of Telnet server. By default, the standard TCP server port is used. However, a nonstandard port can be specified here with the IP address or domain name separated by a colon (:).
- Activate** Starts Telnet client function. The key combination **Control J** cancels the session.

### » **Utilities/Upgrade Menu**

Write security: 2; Read security: 3

The Express L128FP's firmware can be upgraded using this menu.

#### »» **Upgrade/Transfer Method**

The two methods for upgrading are **TFTP** and **XMODEM**. **TFTP** requires a TFTP server running somewhere on the network. The Express L128FP starts a TFTP client function which gets the upgrade code from the TFTP server. Selecting **XMODEM** will load the upgrade code through the maintenance port using any PC terminal emulator with xmodem capability.

#### »» **Upgrade/TFTP Host**

This is required when the transfer method is TFTP. It is the IP address or domain name (if DNS is configured) of the TFTP server.

#### »» **Upgrade/Filename**

This is required when the transfer method is TFTP. It is the case-sensitive file name which is the upgrade code.

**»» Upgrade/Status**

This appears when TFTP is used. It displays the status of the transfer as it happens. Any error or success message will be displayed here.

**»» Upgrade/Start Transfer**

This activator is used when the configurable items in this menu are complete.



*Once started, the Express L128FP will prompt for erasing the flash. When the flash is erased and the upgrade transfer fails, do not turn off the unit. Retry the transfer until successful. Otherwise, if power is removed before upgrade has finished, the upgrade will have to occur from the maintenance port using XMODEM. If this happens, set a PC terminal emulation program to 9600 baud and attach to the Express L128FP's maintenance port. Press **Return** to display a simple terminal menu for upgrading. This menu appears when the flash code has been erased or is corrupt. The menu will also appear if you power up with the back panel switch one in the up position.*

**»» Upgrade/Abort Transfer**

Use this activator to cancel any TFTP transfer in progress.

**»» Upgrade/TFTP Server**

Setting this to **Yes** allows another Express L128FP to upgrade its code using TFTP client. This, in effect, turns on the Express L128FP TFTP server function and allows its code to be “cloned.” Setting to **No** (def) will deny any request from TFTP clients.

**» Utilities/Exit**

Write security: 5; Read security: 5

Activating this feature will exit the terminal session from the maintenance port or Telnet. It is equivalent to the key combination **Control L**.



### **SPECIFICATIONS AND FEATURES**

This section lists the standard specifications and features incorporated in the Express L128FP.

#### **Network Interface**

- RJ-45 for IDSL two-wire service.
- Signal Format: 2B1Q
- Max distance per loop: 15 kft at 26 AWG

#### **Ethernet Interface (LAN)**

Ethernet/IEEE 802.3 10BaseT.

#### **Display**

Available through terminal interface or Telnet session

#### **Environmental**

- Operating Temperature: 0 - 50 °C
- Storage Temperature: 20 - 70 °C
- Relative Humidity: Up to 95% non-condensing

#### **Physical**

- Dimensions: 1.625" H x 9.0" W x 6.375" D
- Weight: 2.5 lbs

#### **Power**

120 VAC, 60 Hz, 8 W typical





## Appendix A Loop Status Messages

---

The Express L128FP displays current loop status of the IDSL on the bottom center line of the terminal screen. The following messages are defined:

### **Connected**

This is seen when the Express L128FP IDSL layer 1 is up. The rate is determined by what it is configured for under **Configuration/WAN/IDSL/Rate**.

### **Echo: Tx: X Rx: Y**

The current transmit and receive count for the PPP echo request test.

### **Layer 1 up**

The Express L128FP's IDSL layer 1 is up.

### **Link down**

The IDSL link is not synchronized.

### **Link In Sync**

The IDSL link is synchronized but layer 1 is not up.

### **NET EOC LOOPBACK**

Express L128FP has received an IDSL EOC loopback command from the far end.

### **RINGING**

An incoming call is ringing.

## **Rate Status Messages**

Displays the rate at which the connection has been established.

## Appendix B Log Messages

---

The Express L128FP Logs menu contains messages of events that occur. The definitions for some of those log messages are as follows:

### **PPP LOG MESSAGES**

#### **BCP <X> down**

level 5

Bridge Control Protocol port <X> has been dropped between Express L128FP and PPP peer.

#### **BCP <X> up**

level 5

Bridge Control Protocol port <X> has been successfully negotiated between Express L128FP and PPP peer.

#### **CCP <X> down**

level 5

Compression Control Protocol port <X> has been dropped between Express L128FP and PPP peer.

#### **CCP <X> up**

level 5

Compression Control Protocol port <X> has been successfully negotiated between Express L128FP and PPP peer.

### **CHAP authen failed**

level 3

The PPP peer has rejected the Express L128FP's username and/or password used for authenticating. Check to make sure the **Configuration/Connection List/Authentication** parameters **Tx Method**, **Tx Username**, and **Tx Password** are correct.

### **EAP authen failed**

level 3

The PPP peer has rejected the Express L128FP's username and/or password used for authenticating. Check to make sure the **Configuration/Connection List/Authentication** parameters **Tx Method**, **Tx Username**, and **Tx Password** are correct.

### **IPCP <X> down**

level 5

IP Control Protocol port <X> has been dropped between Express L128FP and PPP peer.

### **IPCP <X> up**

level 5

IP Control Protocol port <X> has been successfully negotiated between Express L128FP and PPP peer.

### **IPXCP <X> down**

level 5

IPX Control Protocol port <X> has been dropped between Express L128FP and PPP peer.

**IPXCP <X> up**

level 5

IPX Control Protocol port <X> has been successfully negotiated between Express L128FP and PPP peer.

**LCP <X> down**

level 5

Link Control Protocol port <X> has been dropped between Express L128FP and PPP peer.

**LCP <X> up**

level 5

Link Control Protocol port <X> has been successfully negotiated between Express L128FP and PPP peer.

**Link is looped back**

level 3

The Express L128FP has dialed a location which is looping back all data. Essentially, it has negotiated PPP with itself.

**Negot not converging**

level 2

Negotiation of the LCP layer is unattainable due to misconfiguration or the Express L128FP or PPP peer is requiring authentication and the other is refusing.

## No IP addr for peer

level 2

The Express L128FP cannot continue the connection because there was no IP address received from the PPP peer or it was not set in **Configuration/Connection List/IP/Route/IP/Net** parameter.

## No Response from peer

level 2

The Express L128FP has dialed or answered a call and no PPP negotiation packets were seen.

## PAP authen failed

level 3

The PPP peer has rejected the Express L128FP's username and/or password used for authenticating. Check to make sure the **Configuration/Connection List/Authentication** parameters **Tx Method**, **Tx Username**, and **Tx Password** are correct.

## Peer failed CHAP authen

level 3

The PPP peer's reported CHAP username and/or password does not match the Express L128FP's parameters. This is most likely caused by PPP peer sending an incorrect username and/or password. Make sure the **Configuration/Connection List/Authentication** parameters **Rx Username** and **Rx Password** are correctly entered. Also, if using RADIUS, check that the server is configured and running properly.

## Peer failed EAP authen

level 3

The PPP peer's reported EAP username and/or password does not match the Express L128FP's parameters. This is most likely caused by

PPP peer sending incorrect username and/or password. Make sure the **Configuration/Connection List/Authentication** parameters **Rx Username** and **Rx Password** are correctly entered. Also, if using RA-DIUS, check that the server is configured and running properly.

### Peer failed PAP authen

level 3

The PPP peer's reported PAP username and/or password does not match the Express L128FP's parameters. This is most likely caused by PPP peer sending incorrect username and/or password. Make sure the **Configuration/Connection List/Authentication** parameters **Rx Username** and **Rx Password** are correctly entered. Also, if using RA-DIUS, check that the server is configured and running properly.

### Peer refused authen

level 3

The PPP peer would not allow the Express L128FP to authenticate it using the method set in **Configuration/Security/PPP**.

### Peer refused SpanTree

level 4

The PPP peer would not participate in the Spanning Tree protocol. This is a warning message only. Bridging will still occur across the WAN port so care must be taken that no loop topologies exist across the connection.

### PPPt[x] ...

level 6

Advance debugging decode of transmitted PPP configuration packets.

## **PPPrx[x] ...**

level 6

Advanced debugging decode of received PPP configuration packets.

## **CALL LOG MESSAGES**

**Power Up - last down cause: <reason>**

level 0 (displayed as level 1 after the unit is reset)

This is the <reason> for the last reset. Most are caused by internal errors. Possible reasons are:

**Bus Error** - Bad address occurred on the internal bus

**Kernel error** - General operating system error

**No SBCs** - Mail resources used up or lost

**Router stack error** - Fatal error in protocol stack

**general panic** - general error

**no rip** - rip tasks could not start

**out of memory** - out of available memory

**out of TCP ports** - all TCP ports are used up

**unknown error** - unknown fatal error has occurred

**Set timer error** - Cannot set real-time clock

**Software Watch Dog Reset** - Software watchdog was not updated



## NETWORK LOG MESSAGES

**Attempting to add bad IP iface route: ifnum=<inter>  
dest=<ip>**

level 4

An IP address <ip> could not be used for the interface number <inter>.

**DHCP couldn't alloc mem**

level 1

A DHCP response could not be generated due to memory allocation problems.

**DHCP response sent**

level 4

A DHCP response was successfully sent to requesting device.

**DHCP socket failed**

level 1

Internal error occurred when attempting to start DHCP server.

**DHCP: Host not added to ARP table**

level 2

The DHCP server could not add requesting host to ARP table.

**Installing bad default route: ifnum=<inter> metric=<hops>  
gw=<ip>**

level 6

The Express L128FP did not install a default route because the <inter> or <hops> was zero.

**Rejecting packet with Source Routing option - src=<srcip>  
dest=<destip>**

level 4

The Express L128FP has dropped a source routed IP packet due to invalid parameters.

**setmask: local IP iface(0), not done**

level 6

Debug error used in determining router stack problems.

**syslog: bad host**

level 2

Syslog function cannot use host name or IP set in **Configuration/Logs/Syslog Host**.

**syslog: no port**

level 2

Syslog function cannot open port to send Log entries.

**TEL: Telnet Session Closed**

level 4

Telnet server session has been closed.

**telclient bad host**

level 2

Telnet client could not use host name or IP address set in **Configuration/Utilities/Telnet Client/Host**.

**telclient bad init**

level 2

Telnet client could not initialize a session.

**Telnet Client: Clr TCBF\_BUFFER flag failed**

level 6

Debugging message related to Telnet client function.

**Telnet Client: Set TCBF\_DONTBLOCK flag failed**

level 6

Debugging message related to Telnet client function.

**Telnet Client socket failed**

level 2

Telnet client function could not open TCP socket.

**Telnet server connect to <ip>**

level 4

Telnet server has connected to Telnet client with IP address <ip>.

**Telnet Session Closed**

level 4

Telnet server has closed connection.

**Telnet Session failed, error <errnum>**

level 2

Telnet server could not connect to Telnet client due to error.

**TELNETD: accept failed**

level 2

Telnet server could not open TCP socket to incoming Telnet client.

**TELNETD: Set TCPC\_LISTENQ failed**

level 6

Debugging message related to Telnet server function.

**TELNETD: Clr TCBF\_BUFFER flag failed**

level 6

Debugging message related to Telnet client function.

**TELNETD: could not obtain peer ip**

level 2

Telnet server function could not get IP address of Telnet client.

**TELNETD: Session failed, error**

level 2

A Telnet server session has failed because of an error.

**TELNETD: Set TCBF\_DONTBLOCK flag failed**

level 6

Debugging message related to Telnet client function.

**TELNETD: SOCKET creation error**

level 2

Telnet server could not be started due to TCP socket error.

**TFTP: can't get to host**

level 2

TFTP client could not get to host.

**TFTP client: unable to open port**

level 2

TFTP client function could not open a UDP port.

**TFTP: error rcvd - <message>"**

level 2

Received error with <message> from TFTP server.

**TFTP: lost communication**

level 2

Lost communication to TFTP client or server during transfer.

**TFTP server: unable to open port**

level 2

TFTP server function could not open a UDP port.



## **UNDERSTANDING SNMP**

As Local Area Network (LAN) environments became standardized over the past ten years, multi-vendor equipment grew with competition. It became necessary to manage the various vendor equipment from a single control console. Thus, the Simple Network Management Protocol (SNMP) emerged as the *de facto* standard for managing commercial Transmission Control Protocol/Internet Protocol (TCP/IP) networks.

The term *SNMP* broadly refers to the message protocols used to exchange information between the network and the managed devices, as well as to the structure of network management databases. SNMP has three basic components:

- **Network Manager:** This is a control program that collects, controls, and presents data pertinent to the operation of the network devices. It resides on a network management station.
- **Agent:** This is a control program that responds to queries and commands from the network manager and returns requested information or invokes configuration changes initiated by the manager. It resides in each network device connected.
- **MIB:** This is an index to the organized data within a network device. It defines the operating parameters that can be controlled or monitored.

When requesting the network manager to retrieve or modify a particular piece of information about a network device, the network manager transmits the request to that network device. The agent in that device interprets the incoming request, performs the requested task, and sends its response to the network manager. The network manag-

er collects all the data from the various network devices and presents it in a consistent form.

Using SNMP Version 1, the network manager can issue three types of commands:

- **GetRequest:** This command retrieves a single item or the first in a series from a network device.
- **GetNextRequest:** This command retrieves the next item in a series from a network device.
- **SetRequest:** This command writes information to a network device.

The network device issues two types of messages:

- **GetResponse:** This message is the response to a network manager **GetRequest** or **GetNextRequest** command.
- **Trap:** This is an unsolicited message issued by a network device to report an operational anomaly or an alarm condition to the network manager.

These messages are typically encased within informational packets and transported over the LAN or WAN.



## SNMP EMBEDDED AGENT

The Express L128FP supports the following groups from MIB-II: (RFC 1213)

- System Group
- UDP Group
- Interfaces Group
- ICMP Group
- Address Translation Group
- IP Group
- TCP Group

Also, the Ethernet transmission MIB is supported (RFC 1643).

The following manager requests are supported:

- Get object
- Get next object
- Set object

## Communities

The Express L128FP permits up to eight communities to be defined. The privilege level of each community can be set. The default community is public with read-only privileges. When the IP address is all zeros, any manager of the community can access the Express L128FP.

## Traps

Up to four hosts can be set to receive traps. Each host entry requires an IP address of the manager.

Trap types supported are: cold start, link up, link down, and authentication failure.



## Appendix D Connector Pinouts


---

**Table D-1. IBM/AT Style EIA-232 Interface**

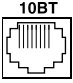
 EIA-232	Pin	Name	I/O	Description
	1	CD	N/C	Carrier Detect
	2	RD	O	Receive Data
	3	TD	I	Transmit Data
	4	DTR	N/C	Data Terminal Ready
	5	GND	N/A	Signal Ground
	6	DSR	N/C	Data Set Ready
	7	RTS	I	Request to Send
	8	CTS	O	Clear to Send
	9	RI	N/C	Ring Indicator

I = Input, O = Output, N/A = Not Applicable, N/C = Not Connected

**Table D-2. RJ-49C ISDN**

 ISDN	Pin	Description
	4	Ring
	5	Tip

**Table D-3. 10BaseT Ethernet**

<b>L128FP</b>	<b>Pin</b>	<b>Signal</b>
 <p>The image shows a standard RJ45 connector icon with the text "10BT" centered above it. The connector has eight pins, with the top four pins being taller than the bottom four.</p>	1	RX1
	2	RX2
	3	TX1
	6	TX2

## Appendix E Terminal Mode Commands

---

The Express L128FP supports a command line interface. All menu options are configurable and readable from the terminal mode. Additional commands are also available.

### MENU COMMANDS

Every menu item in the menu structure can be accessed through the terminal mode interface. Terminal commands are as follows:

**top\_menu sub\_menu1 sub\_menu2 ... config\_item**

Each config\_item is entered as shown below.

<b>TYPE:</b>	<b>ENTERED AS:</b>
<b>string</b>	printable characters within double quotes
<b>password</b>	printable characters within double quotes
<b>IP address</b>	xx.xx.xx.xx (0..9) separated by '.'
<b>Hex</b>	xx:xx:xx:xx (0..9,a..f) separated by ':'
<b>enum</b>	sub-string or [#index]
<b>unsigned</b>	digits (0..9)
<b>date</b>	mm-dd-yyyy
<b>time</b>	hh:mm:ss
<b>date/time</b>	mm-dd-yyyy hh:mm:ss
<b>activator</b>	read only
<b>list</b>	followed by index with first record being 1
<b>array</b>	followed by index with first record being 1

One of the following key words must be used first:

<b>KEYWORD:</b>	<b>GOES DIRECTLY TO :</b>
<b>info</b>	<b>Configuration/System Info</b> menu.
<b>isdn</b>	<b>Configuration/WAN/ISDN</b> menu.
<b>L2</b>	<b>Configuration/WAN/L2 Protocol</b> menu.
<b>ip</b>	<b>Configuration/IP</b> menu.
<b>ipx</b>	<b>Configuration/IPX</b> menu.
<b>bridge</b>	<b>Configuration/Bridge</b> menu.
<b>security</b>	<b>Configuration/Security</b> menu.
<b>ppp</b>	<b>Configuration/PPP Profile</b> menu.
<b>telnet</b>	<b>Configuration/Management/Telnet</b> menu.
<b>snmp</b>	<b>Configuration/Management/SNMP</b> menu.
<b>maint</b>	<b>Configuration/Management/Maint</b> menu.
<b>status</b>	<b>Configuration/Status</b> menu.
<b>test</b>	<b>Configuration/Test</b> menu.
<b>logs</b>	<b>Configuration/Logs</b> menu.
<b>util</b>	<b>Configuration/Utilities</b> menu.
<b>frame</b>	<b>Configuration/WAN/Frame Relay</b> menu

Some examples are listed below:

<b>telnet user 1 name "guest"</b>	sets user name for Telnet user list entry 1 to "guest"
<b>test 2047</b>	starts 2047 test
<b>status ip 1 gateway</b>	returns the gateway address for IP route table entry 1

## ADDITIONAL COMMANDS

Other commands available from the terminal mode are listed below:

<b>save</b>	Saves the configuration to non-volatile RAM (flash).
<b>mac</b>	Returns the MAC address for the Express L128FP.
<b>version</b>	Returns the firmware version and routing stack version.
<b>reset</b>	Resets the unit.
<b>exit</b>	Leaves terminal mode and returns to menus.
<b>download</b>	Downloads complete configuration to the terminal screen for capture.

## DOWNLOAD/UPLOADING CONFIGURATION

The Express L128FP's configuration can be captured to a text file using the download command. The text file can be edited if required. Upload of the configuration can be accomplished by sending the text file to the Express L128FP in terminal mode. A baud rate of 9600 is strongly recommended when uploading. As soon as the upload has been completed, type **save** to save the new configuration to flash. A **reset** command or power cycle 10 seconds after the save command is recommended to ensure that the new configuration is complete.





# Acronyms

---

AEP	AppleTalk Echo Protocol
AMI	Alternate Mark Inversion
ARP	Address Resolution Protocol
B (Channel)	A 64 kbps digital information channel
BCP	Bridge Control Protocol
BONDING	Bandwidth On Demand Interoperability Group
BOOTP	Bootstrap Protocol
BPDU	Bridging Protocol Data Unit
bps	Bits per second
Bps	Bytes per second
BRI	Basic Rate Interface
CA	Call Appearance
CCP	Compression Control Protocol
CCITT	Consultative Committee for International Telegraphy and Telephony
CD	Carrier Detect
CPE	Customer Premises Equipment
CRC	Cyclic Redundancy Check
CSMA/CD	Carrier Sense Multiple Access Collision Detect
DHCP	Dynamic Host Configuration Protocol
DLCI	Data Link Connection Identifier
DMS	Digital Multiplex Switching
DTE	Data Terminal Equipment

DTMF	Dual Tone Multi-Frequency
EKTS	Electronic Key Telephone Service
ESS	Electronic Switching System
FAX	Facsimile
FEBE	Far End Block Errors
FTP	File Transfer Protocol
ICMP	Internet Control Message Protocol
ID	Identification
IETF	Internet Engineering Task Force
I/O	Input/Output
IP	Internet Protocol
IPCP	Internet Protocol Control Protocol
IPX	Internetwork Packet Exchange
I2L	Integrated Injected Logic
IEC	Inter-Exchange Carrier
ISDN	Integrated Services Digital Network
ISO	International Standardization Organization
ISP	Internet Service Provider
kbps	Kilobits per second
kHz	Kilohertz
LAN	Local Area Network
LCP	Link Control Protocol
LDN	Local Directory Number
MAC	Media Access Control
MIB	Management Information Base
MP	Multilink Protocol
MRU	Maximum Receivable Unit

MRRU	Maximum Receivable Reconstructable Unit
NBP	Name Binding Protocol
NEBE	Near End Block Errors
NIC	Network Interface Card
NI-1	National ISDN-1
NT	Network Termination
PBX	Private Branch Exchange
PC	Personal Computer
PING	Packet InterNet Groper
POTS	Plain Old Telephone Service
PPP	Point-to-Point Protocol
PRI	Primary Rate Interface
RFC	Request For Comments
RIP	Routing Information Packet, Routing Information Protocol
RTMF	Routing Table Maintenance Protocol
SAP	Service Advertising Protocol
SNMP	Simple Network Monitoring Protocol
SPCS	Stored Program Controlled Switching System
SPID	Service Profile Identifier
TCP	Transmission Control Protocol
TEI	Terminal Endpoint Identifier
TFTP	Trivial File Transfer Protocol
UDP	User Datagram Protocol
WAN	Wide Area Network
ZIP	Zone Information Protocol



# Glossary

---

## ***10Base2***

IEEE 802.3 specification, similar to Ethernet, using thin coaxial cable that runs at 10 Mbps, with a maximum distance of 185 meters per segment. Also known as Thin Ethernet or Thinwire Ethernet.

## ***10BaseT***

IEEE 802.3 specification, using unshielded twisted-pair cabling and running at 10 Mbps.

## ***AEP***

AppleTalk Echo Protocol. Allows a node on an AppleTalk network to send a packet to another node and in return, receive an echoed copy of the packet.

## ***B-Channel***

64 kbps bearer channel used for voice, circuit, or packet switched data.

## ***bearer service***

As defined by CCITT standards, a type of telecommunication service that provides the capability for the transmission of information between user-to-network interfaces. Bearer services defined for ISDN are circuit mode and packet mode.

## ***BOOTP***

The Bootstrap Protocol allows a network node to determine certain startup information such as its IP address.

### ***Bridge***

A data communications device that connects two or more networks. A bridge stores and forwards complete packets between the networks. Bridges operate at the data-link layer of the OSI model.

### ***CCITT***

Consultative Committee on International Telephony and Telegraphy. A body of the International Telegraph Union (ITU) which prepares recommendations, commonly referred to as international standards, to resolve technical telegraph and telephone problems.

### ***central office (CO)***

In telephony, the phone company switching facility or center, usually a Class 5 end office, at which subscribers local loops terminate. Handles a specific geographic area, identified by the first three digits of the local telephone number. Usually the facilities of the local BOC.

### ***CSMA/CD***

Carrier Sense Multiple Access Collision Detect. A channel access mechanism where devices check the channel for a carrier before transmitting. If no carrier is sensed for the specified period of time, the device can transmit. If two devices transmit at once, a collision occurs and is detected by all colliding devices. This collision subsequently delays their retransmissions for a random length of time. CSMA/CD is used by Ethernet and IEEE 802.3.

### ***D-channel***

The ISDN channel that carries signalling information to control the call setup, teardown, or invocation of supplementary services. The D-Channel may also be used to provide packet mode data service.

### ***DDS***

Dataphone Digital Service. AT&T private line service for transmitting data over a digital system. The digital transmission system transmits electrical signals directly, instead of translating the signals into tones

of varied frequencies as with traditional analog transmission systems. Digital techniques provide more efficient use of transmission facilities, resulting in lower error rates and costs than analog systems.

***digital hub***

Designated office where DDS channels are interconnected and where synchronous network timing, testing access, and additional service features are provided.

***Ethernet***

A local area network used for connecting computers, printers, workstations, a terminals, servers, etc., within the same building or campus. Ethernet operates over twisted wire and coaxial cable at speeds up to 10 Mbps. Ethernet specifies a CSMA/CD.

***four-wire circuits***

Telephone lines using two wires for transmitting and two wires for receiving, offering much higher quality than a 2-wire circuit. All long distance circuits are 4-wire. Almost all local phone lines and analog phones are 2-wire.

***group 4***

A high-speed (56 kbps) facsimile protocol specific to ISDN.

***hop count***

A routing metric used to measure the distance between a source and a destination. Particularly used by RIP.

***hub***

(1) Communications center, (2) Major routing station for connecting channels, (3) DDS connecting center.

**IEEE**

Institute of Electrical and Electronic Engineers. Professional organization that defines network standards. IEEE LAN standards are the predominant LAN standards today and include protocols similar or virtually equivalent to Ethernet and Token Ring.

**IEEE 802.1d**

An algorithm used to prevent bridging loops by creating a spanning tree.

**IEEE 802.2**

An IEEE LAN protocol that specifies an implementation of the LLC sublayer of the data link layer. It handles errors, framing, flow control, network layer (Layer 3) service interface, and is used in LANs.

**IEEE 802.3**

A physical layer standard specifying a linear bus network LAN with a CSMA/CD access method on a bus topology. Ethernet follows the 802.3 standard, transmitting at 10 megabits per second. This is the most common local area network specification. Physical variations of IEEE 802.3 include 10Base2 and 10BaseT.

***in-band signalling***

Signalling made up of tones which pass within the voice frequency band and are carried along the same circuit as the talk path being established by the signals. Virtually all signalling (request for service, dialing, disconnect, etc.) in the U.S. is in-band signalling. Most of that signalling is MF (Multi-Frequency) dialing. The more modern form of signalling is out-of-band.

***interexchange carrier***

Since divestiture, any carrier registered with the FCC authorized to carry customer transmissions between LATAs interstate, or if approved by a state public utility commission, intrastate. Includes carri-



ers such as AT&T Communications, Satellite Business Systems, GTE Telenet, GTE Sprint, and MCI.

***information element***

The name for the data fields within an ISDN Layer 3 message.

***interworking***

Communication between two types of networks or end equipment. This may or may not involve a difference in signalling or protocol elements supported.

***Internet Protocol***

A TCP/IP protocol describing software that tracks the Internet address of nodes, routes outgoing message, and recognizes incoming messages. Used in gateways to connect networks at OSI network Level 3 and above.

***IPX***

Internetwork Packet Exchange. A Novell NetWare protocol used to move information across networks.

***ISDN***

Integrated Services Digital Network. A network architecture that enables end-to-end digital connections. The network supports diverse services through integrated access arrangements and defines a limited set of standard, multipurpose interfaces for equipment vendors, network providers, and customers. Interworking with a public switched telephone network is retained.

***jabber***

An error condition in which a network device continually transmits garbage onto the network. In IEEE 802.3, a data packet whose length exceeds that prescribed in the standard.

***jitter***

The slight movement of a transmission signal in time or phase that can introduce errors and loss of synchronization for high-speed synchronous communications. See phase jitter.

***LATA***

Local Access and Transport Area. One of 161 local telephone serving areas in the United States, generally encompassing the largest standard statistical metropolitan areas. Subdivisions established as a result of the AT&T divestiture that now distinguish local from long distance service. Circuits with both end-points within the LATA (intraLATA) are generally the sole responsibility of the local telephone company, while circuits that cross outside the LATA (interLATA) are passed on to an interexchange carrier.

***loopback***

A diagnostic procedure where data is sent to the device being tested, and the output of the device is fed directly back to its input, looped around, and the returning data is checked against that which was sent.

***Media Access Control (MAC)***

As defined by the IEEE, the lower of the two sublayers of the OSI reference model data link layer. The MAC sublayer is concerned with media access issues, such as whether token passing or contention is used.

***message***

The Layer 3 information that is passed between the CPE and SPCS for signalling.

***multipoint line***

A communications line having multiple cable access points.

***Name Binding Protocol (NBP)***

The AppleTalk transport-level protocol that translates a character string name into the internet address of the corresponding socket client; NBP enables AppleTalk protocols to understand user-defined zones and device names by providing and maintaining translation tables that map these names to corresponding socket addresses.

***NAT***

Network Address Translation occurs at the borders of stub domains. Its purpose is to translate the IP address of passing packets by changing all references of one IP address to another. Translation is performed as per RFC 1631.

***netmask***

A 32-bit bit mask which shows how an Internet address is to be divided into network, subnet, and host parts. The netmask has ones in the bit positions in the 32-bit address which are to be used for the network and subnet parts, and zeros for the host part. The mask should contain at least the standard network portion (as determined by the address's class), and the subnet field should be contiguous with the network portion.

***non-ISDN line***

Any connection from a CPE to a SPCS that is not served by D-Channel signalling.

***non-ISDN trunk***

Any trunk not served by either SS7 or D-Channel signalling.

***NT1***

Network Termination 1. A unit that provides physical and electromagnetic termination of the U-interface 2-wire transmission line, converts between Layer 1 formats used at the U- and T- reference points, and performs some maintenance functions.

***phase jitter***

In telephony, the measurement in degrees out-of-phase that an analog signal deviates from the reference phase of the main data-carrying signal. Often caused by alternating current components in a telecommunications network.

***point-to-point protocol (PPP)***

An implementation of TCP/IP which is intended for transmission using telephone lines. PPP provides router-to-router and host-to-network connections over both synchronous and asynchronous circuits.

***poison routes***

Routes which have an infinite metric which to other routers means the network for the route is inaccessible.

***PRA***

Primary Rate Access. Connects high-capacity CPE, such as PBXs, to the network. In the US, this is composed of twenty-three 64 kbps channels and one 64 kbps D-channel. Also known as Primary Rate Interface (PRI).

***RIP***

Routing Information Protocol. A protocol used to exchange routing information among a set of computers connected by a LAN. RIP uses hop counts as a routing metric.

***router***

An interface which finds the best route between two networks. Routers forward packets from one network to another, based on network layer information.

***routing metric***

The method by which a routing algorithm determines one route is better than another. This information is stored in routing tables. Such ta-

bles include reliability, delay bandwidth, load, MTUs, communication costs, and hop count.

***RS-232-C***

An EIA-specified physical interface with associated electrical signaling between DCE and DTE. The most commonly employed interface between computer devices and modems.

***RTMP***

Routing Table Maintenance Protocol. The AppleTalk protocol used to establish and maintain the routing information that is required by internet routers in order to route datagrams from any source socket to any destination socket in the internet. Using RTMP, internet routers dynamically maintain routing tables to reflect changes in internet topology.

***service advertising protocol (SAP)***

An IPX protocol through which network resources such as servers become known to clients.

***serving area***

Region surrounding a broadcasting station where signal strength is at or above a stated minimum. The geographic area handled by a telephone central office facility. Generally equivalent to a LATA.

***SNMP***

Simple Network Management Protocol. SNMP provides a means to monitor and set network configuration and runtime parameters.

***spanning tree***

A loop-free subset of the topology of a network.

## ***SPCS***

Stored Program Controlled Switch. A digital switch that supports call control, routing, and supplementary services provision under software control. All ISDN switches are SPCSs.

## ***spoofing***

Spoofing reduces the required bandwidth by having devices, such as bridges or routers, answer for the remote devices. This causes the remote LAN to appear as if it is still connected to the LAN device even though it is not. The spoofing saves the WAN bandwidth, because no packet is ever sent out on the WAN.

## ***synchronous***

(1) The condition occurring when two events happen in a specific time relationship with each other, both under control of a master clock; (2) A method of data transmission requiring the transmission of timing pulses to keep the sender and receiver synchronized in their communication used to send blocks of information. Synchronous data transmission is used in high speed data circuits because there is less overhead than asynchronous transmission of characters which contain two extra bits per character to effect timing.

## ***T1***

Also T-1. A digital transmission link with a capacity of 1.544 Mbps. T1 uses two pairs of normal twisted wires. T1 normally can handle 24 voice conversations with each conversation being digitized at 64 kbps. With more advanced digital voice encoding techniques, it can handle more voice channels. T1 is a standard for digital transmission in North America.

## ***TA***

Terminal Adaptor. A DCE that connects to the ISDN S-Interface and enables non-ISDN terminal equipment to communicate over the ISDN.

***TE1***

Terminal Equipment Type 1. ISDN-compatible terminals.

***Telnet***

The TCP/IP standard protocol for remote terminal connection service. Telnet allows a user at one site to interact with a remote timesharing system at another site as if the user's terminal were connected directly to the remote machine.

***TCP/IP***

Transmission Control Protocol/Internet Protocol. A set of protocols developed by the Department of Defense to link dissimilar computers across many kinds of networks.

***twisted pair***

Two wires twisted around each other to reduce induction (interference) from one wire to the other. Several sets of twisted pair wires may be enclosed in a single cable. Twisted pair is the normal cabling from a central office to your home or office, or from your PBX to your office phone. Twisted pair wiring comes in various thicknesses. As a general rule, the thicker the cable is, the better the quality of the conversation and the longer cable can be and still get acceptable conversation quality. However, the thicker it is, the more it costs.

***2B+D***

The Basic Rate Interface (BRI) in ISDN. A single ISDN circuit divided into two 64 kbps digital channels for voice or data and one 16 kbps channel for low speed data (up to 9,600 baud) and signalling. 2B+D is carried on one or two pairs of wires depending on the interface, the same wire pairs that today bring a single voice circuit into your home or office. See ISDN.

***23B+D***

In ISDN, also known as the Primary Rate Interface. A circuit with a wide range of frequencies that is divided in twenty-three 64 kbps

paths for carrying voice, data, video, or other information simultaneously. It bears a remarkable similarity to today's T1 link, except that T1 carries 24 voice channels. In ISDN, 23B+D gives twenty-three channels and one D channel for out-of-band signalling. However, in T1, signalling is handled in-band. See ISDN.

### ***two-wire circuit***

A transmission circuit composed of two wires, signal and ground, used to both send and receive information. In contrast, a 4-wire circuit consists of two pairs. One pair is used to send and one pair is used to receive. All trunk circuits (long distance) are 4-wire. A 4-wire circuit delivers better reception, but also costs more. All local loop circuits (those coming from a Class 5 central office to the subscriber's phone system) are 2-wire, unless a 4-wire circuit is requested.

### ***U-interface***

A twisted pair subscriber loop that connects the NT1 reference point to the ISDN network, as defined in the I.411 Recommendation. This interface provides Basic Rate Access with an operating frequency of 160 kbps and an information rate of 144 kbps. Under U.S. regulations, this also marks the line of demarcation between customer-owned equipment and the public network.

### ***ZIP***

Zone Information Protocol. The AppleTalk session-layer protocol used to maintain and discover the internet-wide mapping of network number ranges to zone names.

### ***Zombie Routes***

Routes that have been identified by the router to be deleted. They remain in the router's route table for a specified amount of time with an infinite metric so that all other routers will learn of this router's intention to delete them.



# Index

---

## Numerics

10baseT interface D-2

## A

ADTRAN frame port 144 1-2

agent C-1, C-3

applications

frame relay connectivity to

ADTRAN frame port144 1-2

single user to corporate LAN  
1-1

SOHO to corporate LAN 1-3

ARP cache 3-60

authentication 3-25, 3-42

PPP peer 3-42

authentication/Rx password  
3-43

authentication/Rx username  
3-43

authentication/Tx method 3-42

authentication/Tx password  
3-43

authentication/Tx username  
3-43

auto detect 1-4, 3-11

## B

baud rate 3-56

BECN timeout 3-41

bridge 3-47

bridge map/active 3-38

bridge map/bridge group 3-39

bridge menu 3-21

bridge mode 1-5

bridge table 3-61

bridge/mode 3-22, 3-47

bridge/WAN IP bridge 3-22

bridge/WAN IPX bridge 3-23

bridging 1-5

concurrent routing and bridg-  
ing 1-5

demand 1-4

## C

call log messages B-6

channel rate 3-11

CHAP 3-42

clock mode 3-10

command line interface E-1

command prompt mode 3-56

commands E-3

communities C-3

communities/manager IP 3-55

communities/name 3-54

communities/privilege 3-54

concurrent routing and bridg-  
ing 1-5

configuration 1-8

downloading/uploading E-3

configuration menu 3-2, 3-8

configuration/bridge 3-21

configuration/frame relay 3-32

configuration/IP 3-12

configuration/IPX 3-19

configuration/management  
3-52

configuration/management  
menu 3-52

configuration/PPP profile 3-42

configuration/security 3-25

configuration/system info 3-8

configuration/terminal mode  
3-56

configuration/WAN 3-10

connection list profile

deleting 3-34

- connection log 3-70
- connection log/active 3-71
- connection log/clear 3-71
- connection log/level 3-71
- connection log/view 3-71
- connection log/wrap 3-71
- connector pinouts D-1
- corporate LAN 1-1, 1-3

## D

- data bits 3-56
- default 1-4
- default gateway 3-13
- demand bridging 1-4
- demand routing 1-4
- DHCP mode 3-15
- display 4-1
- DLCI mapping 3-33
- DLCI mapping/active 3-34
- DLCI mapping/bridge map 3-38
- DLCI mapping/DLCI 3-35
- DLCI mapping/filters 3-39
- DLCI mapping/IP map 3-35
- DLCI mapping/IPX map 3-37
- DLCI table 3-59
- DNS 3-16
- DNS server 3-16
- DNS/domain name 3-17
- DNS/server 1 3-17
- DNS/server 2 3-17
- domain name 3-17
- download/uploading configuration E-3

## E

- EAP 3-42
- echo request 3-68
- EIA-232 interface D-1
- embedded agent C-3
- environmental specifications 4-1
- Ethernet interface D-2

- Ethernet interface (LAN) 4-1
- Express L128FP
  - configuration 1-8
  - front panel 1-7
  - functions provided by 1-3
  - indicators 1-7
  - installation 2-1
  - overview 1-1
  - rear panel 1-7
  - security 1-9
  - terminal menu structure 3-1

## F

- factory default 1-4
- features 4-1
- FEBE 3-11
- FEBEs 3-11
- filter
  - setting up 3-27
- filter defines 3-27
- filter defines /IP filter defines 3-29
- filter defines /IPX filter defines 3-30
- filter defines /MAC filter defines 3-28
- filter defines /pattern filter defines 3-28
- filters 3-39, 3-49
- filters/in exceptions 3-40, 3-50
- filters/LAN-to-WAN (out) 3-51
- filters/out exceptions 3-41, 3-51
- filters/Out to PVC 3-41
- firmware revision 3-9
- frame relay 1-4, 3-32
- frame relay connectivity to ADT-RAN frame port144 1-2
- frame relay/DLCI mapping 3-33
- frame relay/DLCI table 3-59
- frame relay/maintenance protocol 3-33

- frame relay/polling frequency 3-33
- frame relay/port 3-58
- frame type 3-20
- front panel 1-7
- front panel indicators 1-7
- G**
- GetNextRequest C-2
- I**
- IDSL 1-1
  - network connection 2-1
  - overview 1-1
  - setting up the line Quick Start-1
- IDSL/channel rate 3-11
- IDSL/FEBEs 3-11
- IDSL/NEBEs 3-11
- indicators 1-7
- installation 2-1
- interface
  - Ethernet 4-1
  - network 4-1
- IP filter defines 3-29
- IP map/active 3-35
- IP map/far-end IP address 3-35
- IP map/IARP 3-35
- IP map/IP netmask 3-36
- IP map/link IP address 3-36
- IP map/NAT 3-37
- IP map/RIP direction 3-37
- IP map/RIP method 3-36
- IP map/RIP protocol 3-36
- IP menu 3-12
- IP router 1-4, 3-14
- IP router/mode 3-14
- IP routes 3-61
- IP routing 1-5
- IP stats 3-66
- IP/default gateway 3-13
- IP/DNS 3-16
- IP/IP address 3-12
  - IP/IP router 3-14
  - IP/mode 3-43
  - IP/NAT 3-15, 3-44
  - IP/proxy ARP 3-18
  - IP/RIP 3-14, 3-45
  - IP/route 3-44
  - IP/static routes 3-13
  - IP/subnet mask 3-12
  - IP/UDP relay 3-17
  - IPX filter defines 3-30
  - IPX map/active 3-37
  - IPX map/IARP 3-38
  - IPX map/link network 3-38
  - IPX menu 3-19
  - IPX router 1-4
  - IPX routes 3-63
  - IPX routing 1-5
  - IPX servers 3-64
  - IPX/frame type 3-20
  - IPX/mode 3-19, 3-46
  - IPX/network 3-19
  - IPX/remote network 3-46
  - IPX/RIP timer 3-21
  - IPX/SAP timer 3-21
  - IPX/seed status 3-20
  - IPX/triggered 3-47
  - IPX/type 20 packets 3-47
- ISDN
  - jack 1-7
  - ISDN jack Quick Start-1
  - ISDN/clock mode 3-10
- L**
- L2 protocol 3-11
- LAN bridge 1-4
- LAN stats 3-65
- LEDs 1-7
- link IP 3-45
- log messages B-1
- logs menu 3-2, 3-69
- logs/connection log 3-70

- logs/network log 3-71
- logs/PPP log 3-70
- logs/sys log host 3-69
- loop status messages A-1

## **M**

- MAC addresses 1-4
- MAC bridging 1-4
- MAC filter defines 3-28
- maint port/baud rate 3-56
- maint port/data bits 3-56
- maint port/parity 3-56
- maint port/password 3-55
- maint port/password protect 3-55

- maint port/stop bits 3-56
- maintenance DLCI 3-41
- maintenance port 3-55
- maintenance protocol 3-33
- management 3-52
- management/maint port 3-55
- management/SNMP 3-54
- management/Telnet 3-52
- menu

- commands E-1
  - navigating 3-4, 3-5
  - structure 3-1

- MIB C-1

- mode 1-5

## **N**

- NAT 1-4, 3-15, 3-16
- NAT mode 1-6
- NAT/Default IP 3-16
- NAT/DHCP mode 3-15
- NAT/DHCP renewal time 3-16
- NAT/web server 3-16
- NEBE 3-11
- NEBEs 3-11
- network address translation 1-4, 1-6

- network connection
  - IDSL 2-1
- network device
  - GetResponse C-2
- network interface 4-1
- network log 3-71
- network log messages B-7
- network log/active 3-71
- network log/clear 3-72
- network log/level 3-72
- network log/view 3-72
- network log/wrap 3-72
- network manager C-1
  - GetRequest C-2
- none 3-15

## **O**

- OFF/ON switch 1-7
- overview
  - Express L128FP 1-1

## **P**

- packets
  - filtering 3-27
- PAP 3-42
- parity 3-56
- password 3-53, 3-55
- pattern filter defines 3-28
- physical specifications 4-1
- ping 3-73
- poison reverse 3-15, 3-45
- polling frequency 3-33
- power requirements 4-1
- PPP 1-4, 3-27, 3-48
- PPP log 3-70
- PPP log messages B-1
- PPP log/active 3-70
- PPP log/clear 3-70
- PPP log/level 3-70
- PPP log/view 3-70
- PPP log/wrap 3-70
- PPP peer 3-16

- PPP profile 3-42
- PPP profile/authentication 3-42
- PPP profile/bridge 3-47
- PPP profile/filters 3-49
- PPP profile/IP 3-43
- PPP profile/IPX 3-46
- PPP profile/PPP 3-48
- PPP/max config 3-48
- PPP/max failure 3-48
- PPP/max timer 3-48
- PPP/VJ compression 3-48
- proxy ARP 3-18
- Q**
- quick startup guide Quick Start-1
- R**
- radius 3-53
- radius server 3-26
- radius server/primary server 3-26
- radius server/retry count 3-26
- radius server/secondary server 3-26
- radius server/secret 3-26
- radius server/UDP port 3-26
- rear panel 1-7, 1-8
- RIP 1-4, 1-5, 3-14, 3-45
- RIP timer 3-21
- RIP/direction 3-15, 3-46
- RIP/method 3-15, 3-45
- RIP/mode 3-14, 3-45
- RIP/protocol 3-14, 3-45
- RIP/triggered 3-46
- RIP/V2 secret 3-15
- RJ-49C interface D-1
- route/force IP 3-44
- route/IP/net 3-44
- route/netmask 3-44
- routing
  - concurrent routing and bridging 1-5
  - demand 1-4
  - IP 1-5
  - IPX 1-5
  - Rx only 3-15
- S**
- SAP 1-4, 1-5
- SAP timer 3-21
- security 1-9
- security levels 3-1, 3-7
- security menu 3-25
- security/authentication 3-25
- security/filter defines 3-27
- security/PPP 3-27
- security/radius server 3-26
- seed status 3-20
- sessions 3-57
- sessions/frame relay 3-58
- sessions/PPP session 3-57
- sessions/spanning tree 3-60
- SetRequest C-2
- signal format 4-1
- SNMP 3-54, C-1
- SNMP access 3-54
- SNMP/communities 3-54
- SNMP/traps 3-55
- SOHO (small office - home office) 1-3
- spanning tree 3-60
- spanning tree algorithm 1-5
- specifications 4-1
  - environmental 4-1
  - physical 4-1
  - power 4-1
- split horizon 3-15, 3-45
- static routes/active 3-13
- static routes/gateway 3-13
- static routes/hops 3-13
- static routes/IP address 3-13
- static routes/private 3-14
- static routes/subnet mask 3-13

- status menu 3-2, 3-57
  - status/ARP cache 3-60
  - status/bridge table 3-61
  - status/IP routes 3-61
  - status/IP stats 3-66
  - status/IPX routes 3-63
  - status/IPX servers 3-64
  - status/LAN stats 3-65
  - status/sessions 3-57
  - status/WAN stats 3-65
  - stop bits 3-56
  - subnet mask 3-12
  - switches
    - OFF/ON 1-7
    - TO HUB/TO NIC 1-7
  - system contact 3-9
  - system info menu 3-8
  - system location 3-8
  - system name 3-8
  - system uptime 3-9
- T**
- Telnet 1-9, 3-52
  - Telnet client 3-74
  - Telnet/server access 3-52
  - Telnet/user list 3-52
  - terminal menu
    - commands E-1
    - navigating 3-4, 3-5
    - structure 3-1
    - top level 3-3
  - terminal mode 3-56
  - terminal mode commands E-1
  - test menu 3-2, 3-68
  - test menu/echo request 3-68
  - TFTP 3-74
  - TFTP host 3-74
  - TO HUB/TO NIC switch 1-7
  - transfer methods 3-74
  - trap C-2
  - traps C-3
  - traps/manager IP 3-55
  - traps/manager name 3-55
  - Tx and Rx 3-15
  - Tx methods 3-42
  - Tx only 3-15
  - type 20 packets 3-47
- U**
- UDP port type 3-18
  - UDP relay 3-17
  - UDP relay list 3-17
  - UDP relay list/relay address 3-18
  - UDP relay list/UDP port type 3-18
  - UDP relay list/UDP ports 1, 2, 3 3-18
  - UDP relay/mode 3-17
  - UDP relay/UDP relay list 3-17
  - upgrade menu 3-74
  - upgrade/abort transfer 3-75
  - upgrade/filename 3-74
  - upgrade/start transfer 3-75
  - upgrade/status 3-75
  - upgrade/TFTP host 3-74
  - upgrade/TFTP server 3-75
  - upgrade/transfer method 3-74
  - user list 3-52
  - user list/authen method 3-53
  - user list/idle time 3-53
  - user list/level 3-53
  - user list/name 3-53
  - user list/password 3-53
  - using keyboard to navigate menu 3-5
  - utilities menu 3-2, 3-73
  - utilities/exit 3-75
  - utilities/ping 3-73
  - utilities/Telnet client 3-74
  - utilities/upgrade menu 3-74
- V**
- VJ compression 3-48

**W**

WAN IP bridge 3-22  
WAN IP bridge proxy ARP 3-23  
WAN IP bridge/netmask 3-23  
WAN IP bridge/network 3-22  
WAN IP bridge/triggered 3-23  
WAN IPX bridge 3-23  
WAN IPX bridge/frame type  
3-24  
WAN IPX bridge/network 3-23  
WAN IPX bridge/seed status 3-

24

WAN IPX bridge/triggered 3-24  
WAN menu 3-10  
WAN stats 3-65  
WAN/ISDN 3-10  
WAN/L2 protocol 3-11  
web 1-9  
web browser 1-9

**X**

xmodem 3-74





# Product Support Information

## Presales Inquiries and Applications Support

Please contact your local distributor, ADTRAN Applications Engineering, or ADTRAN Sales:

Applications Engineering      (800) 615-1176

Sales      (800) 827-0807

## Post-Sale Support

Please contact your local distributor first. If your local distributor cannot help, please contact ADTRAN Technical Support and have the unit serial number available.

Technical Support      (888) 4ADTRAN

## Repair and Return

If ADTRAN Technical Support determines that a repair is needed, Technical Support will coordinate with the Customer and Product Service (CaPS) department to issue an RMA number. For information regarding equipment currently in house or possible fees associated with repair, contact CaPS directly at the following number:

CAPS Department      (256) 963-8722

Identify the RMA number clearly on the package (below address), and return to the following address:

ADTRAN, Inc.  
CAPS Department  
6767 Old Madison Pike  
Progress Center  
Building #6, Suite 690  
Huntsville, AL 35807

RMA # \_\_\_\_\_