



## **Configuring pcAnywhere with ADTRAN Express 3000 ISDN Adapters**

These instructions will provide the information needed to configure pcAnywhere for use with the ADTRAN Express 3000. The specific example here was set up and tested using pcAnywhere Version 11.0 running on Windows XP Professional. There may be minor differences with other versions of pcAnywhere.

Before you begin, you need to know some information (provided by your TELCO) about your ISDN lines.

- LDN 1 and 2 – these will be 7 digits like 9992222 and 9992223
- SPID 1 and 2 – usually consist of the full 10 digit phone number with a 0101 on the end like 25699922220101 and 25699922230101
- Switch type – usually this is National ISDN1 but might be AT&T 5ESS

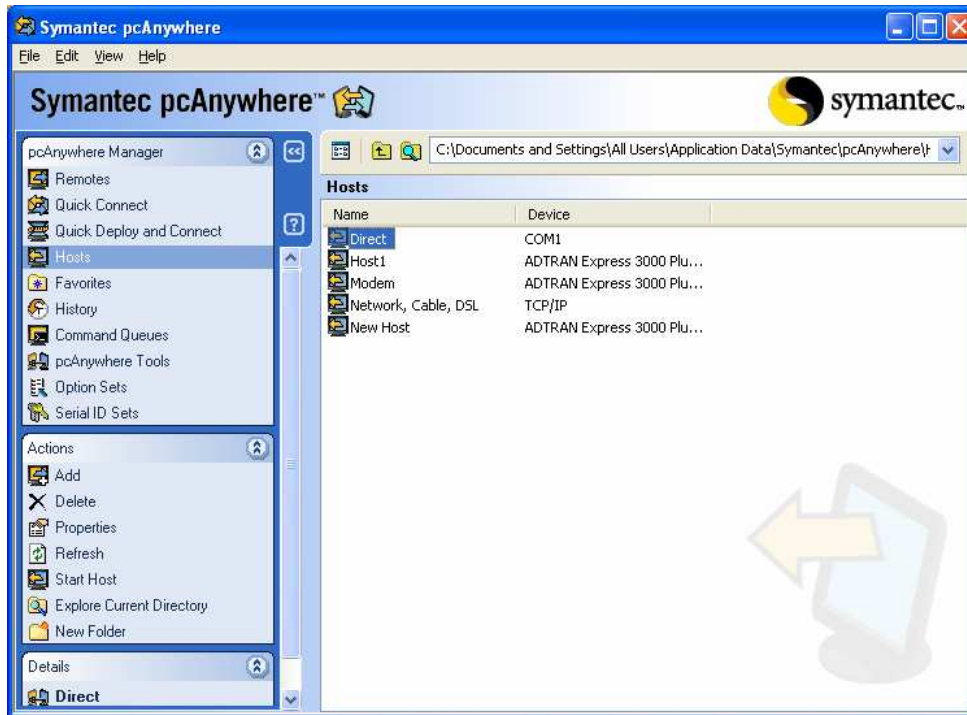
Basic steps:

1. Configure Express 3000 unit on host system.
2. Configure Express 3000 unit on remote system.
3. Install pcAnywhere software on host system and configure as a host.
4. Install pcAnywhere software on remote system and configure it to connect to the host system.

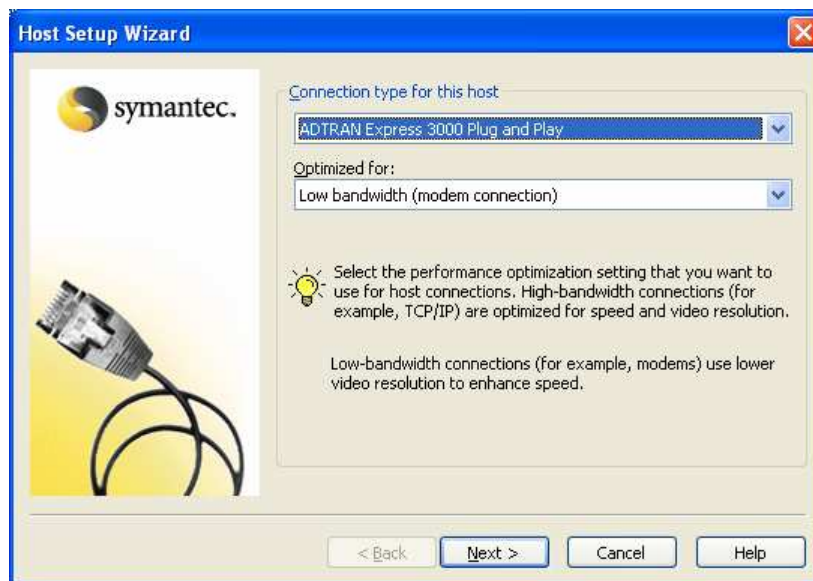
This document is going to assume that you have already installed the ADTRAN Express 3000 into the Windows operating system.

Host Setup Procedure

1. Start the pcAnywhere program.
2. Make sure Hosts is selected in the pcAnywhere Manager section. In the Actions section, click Add.



3. Change the Connection Type to the Express 3000. Confirm that the Optimized for option will default to Low bandwidth (modem connection). Click Next.



4. Review the options available. The defaults are shown below. If you would like for pcAnywhere to start when the computer starts up, select Launch with Windows. Click Next.



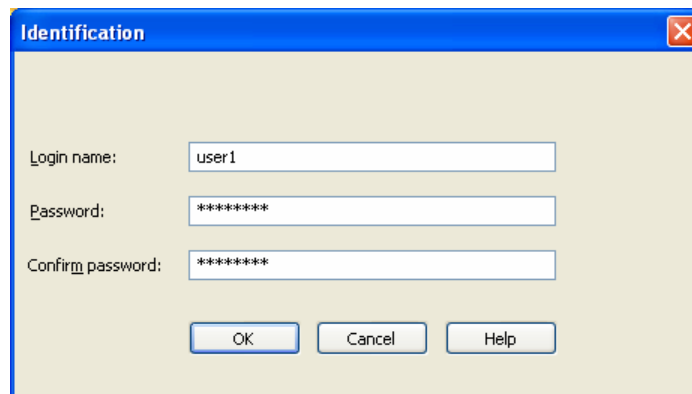
5. Click Next.



6. This is where you can add user accounts to allow connections to pcAnywhere. Click Add.

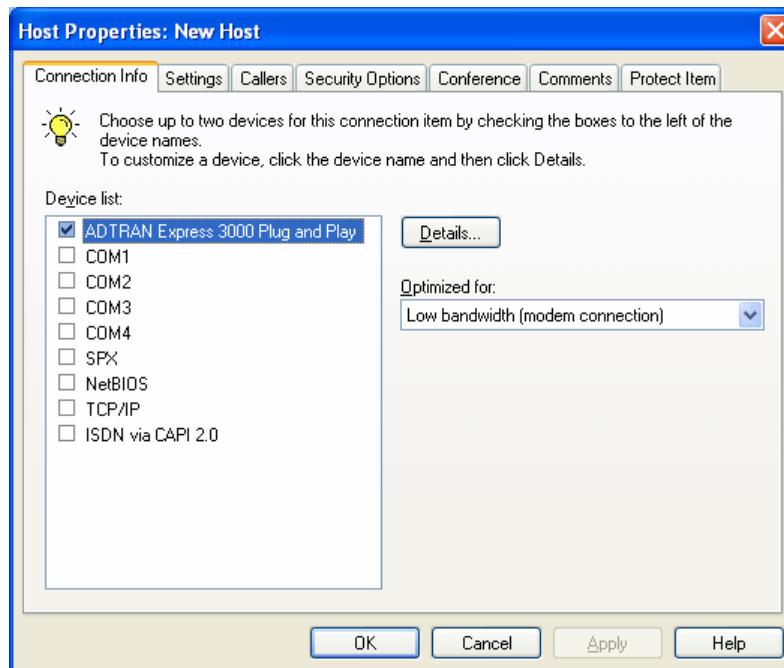


7. Type in a username and password. Click OK. For some strange reason, the user you just created may not show up in the list. If you want, create an additional user.



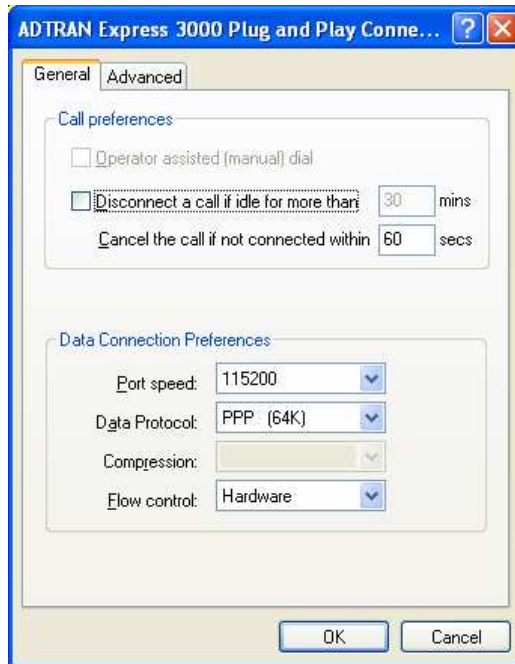
The screenshot shows a dialog box titled "Identification" with a close button (X) in the top right corner. It contains three text input fields: "Login name:" with the text "user1", "Password:" with "\*\*\*\*\*", and "Confirm password:" with "\*\*\*\*\*". At the bottom, there are three buttons: "OK", "Cancel", and "Help".

8. Click Finish.
9. When you are returned to the pcAnywhere screen, you must give your host connection a name.
10. Now right-click on your new host and select Settings.



The screenshot shows a dialog box titled "Host Properties: New Host" with a close button (X) in the top right corner. It has several tabs: "Connection Info", "Settings", "Callers", "Security Options", "Conference", "Comments", and "Protect Item". The "Connection Info" tab is active. A lightbulb icon is next to the text: "Choose up to two devices for this connection item by checking the boxes to the left of the device names. To customize a device, click the device name and then click Details." Below this is a "Device list:" section with a list of devices and checkboxes:  ADTRAN Express 3000 Plug and Play,  COM1,  COM2,  COM3,  COM4,  SPX,  NetBIOS,  TCP/IP, and  ISDN via CAPI 2.0. A "Details..." button is to the right of the list. Below the list is an "Optimized for:" dropdown menu with "Low bandwidth (modem connection)" selected. At the bottom, there are four buttons: "OK", "Cancel", "Apply", and "Help".

11. Click Details and change the settings if necessary to match those shown below. Click OK.

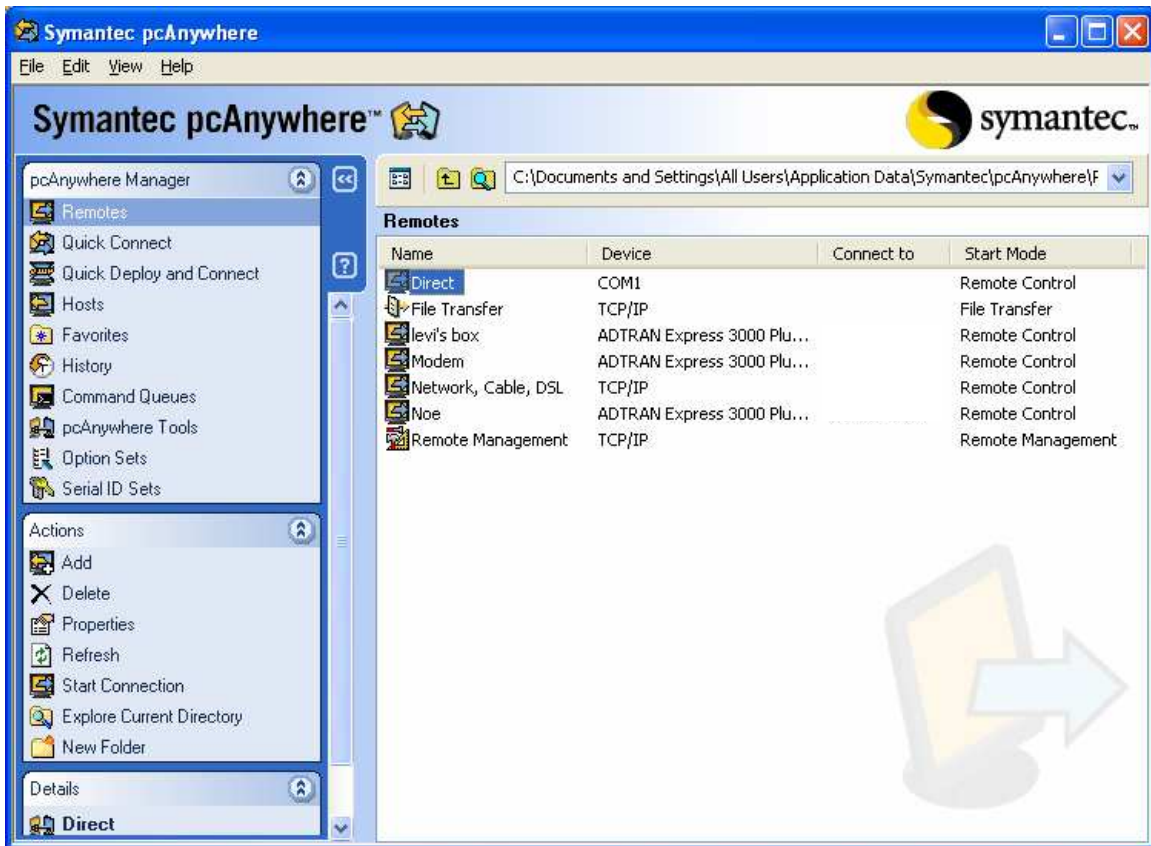


12. Click Apply and then click OK.
13. To start the host, double-click on host and The host machine should now be ready to answer calls from the remote system. Your system tray should now contain an icon as shown below.



## Remote Setup Procedure

1. Select Remotes from the pcAnywhere Manager. Click Add from the Actions navigation bar on the left.



2. Change the Connection type for this remote to the ADTRAN Express 3000. Enter the correct area code, phone number, and country code for the number you are trying to connect to. Click Next.



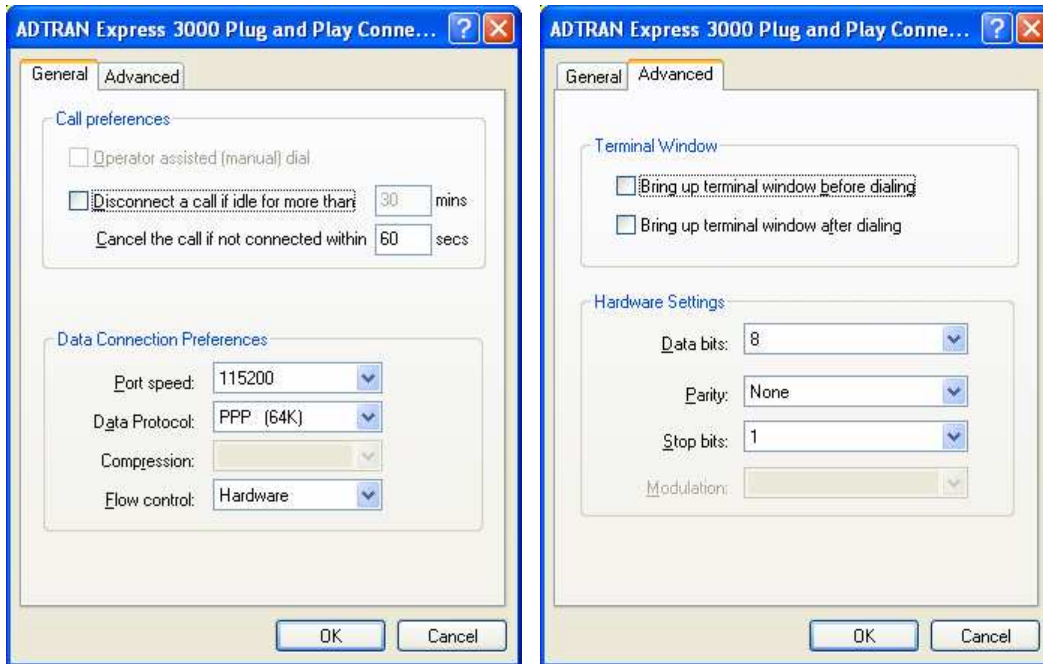
3. Click Finish.



4. Give the new Remote a name.



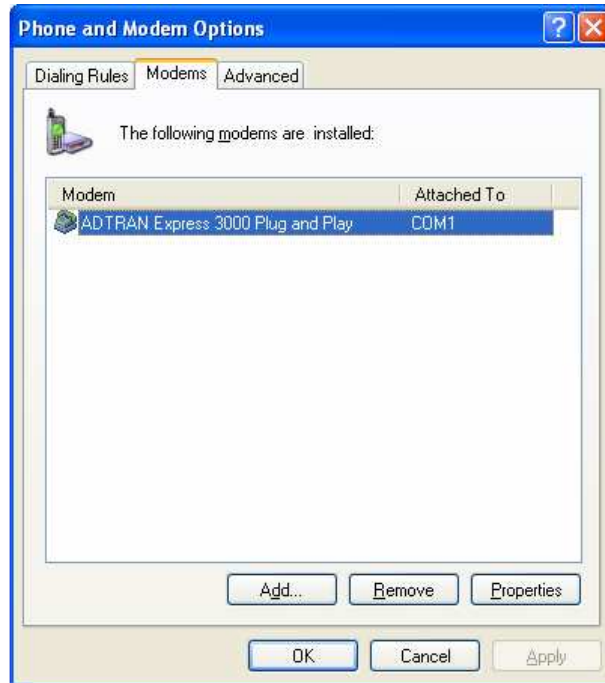
5. Right-click your new remote connection and select Properties. Make sure the Adtran Express 3000 is selected under the Device List. Click Details and make sure the settings match those shown below. Click OK.



6. The remote system is now ready to dial the host system. To initiate a connection, double-click the remote.

## Finishing Touches

1. Click Start, Control Panel and then double-click Phone and Modem Options (this assumes you are using the Classic View of control panel in Windows XP).
2. Select the Modems tab and you should see your ADTRAN Express 3000 listed.



3. Select the Express and click the Properties button.
4. Select the Modem tab and change the Maximum Port Speed to 115200. Select the Advanced tab and enter the following line of text to the Extra initialization commands field: `ats54=2s53=3s13=1s0=1`. Click OK and OK.

