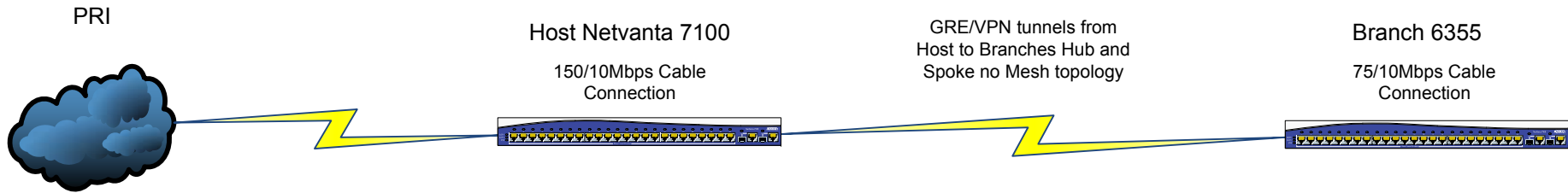


Host site is having no issues with calls. Remote sites indicate incoming caller can hear them fine but remote sites cannot hear incoming caller. Latency between sites is consistent and averages around 30-40ms.

All calls come in and out of PRI at Host and then are sent or received across tunnels to branches



```
interface eth 0/0
description WAN connection
ip address
ip access-policy Public
ip crypto map VPN
ip flow ingress
media-gateway ip primary
traffic-shape rate 10000000
qos-policy out VOIP
no awcp
no shutdown
no lldp send-and-receive
```

```
qos map VOIP 10
match dscp 46 26
priority unlimited
```

Not sure what the ip flow ingress is, maybe that was top talker related when I was troubleshooting

I notice when I look at QoS assignment it shows "none" for Inbound QoS policy and VOIP for Outbound. Should I apply the policy to Inbound as well on remote locations?

```
interface eth 0/0
description WAN connection
ip address
ip ffe
access-policy Public
crypto map VPN
media-gateway ip primary
traffic-shape rate 1000000
qos-policy out VOIP
no awcp
no shutdown
no lldp send-and-receive
```

```
qos map VOIP 20
match dscp 46 26
priority unlimited
```