



## Configuration Guide

### Custom Pollers in SolarWinds Orion

---

This configuration guide will assist in the setup of custom management information base (MIB) pollers for ADTRAN products within the SolarWinds® Orion® network performance monitor. To achieve this objective, this guide outlines the step-by-step process necessary to configure a custom poller for an ADTRAN product, as well as add the poller to the Orion Web interface. The information contained within this guide allows network administrators who use the Orion application to successfully configure a custom poller using applicable Signaling Network Management Protocol (SNMP) values.

This guide consists of the following sections:

- *Custom Pollers Overview* on page 2
- *Hardware and Software Requirements and Limitations* on page 2
- *Setting Up a Custom MIB Poller* on page 2
- *Adding the Custom Poller to Additional Nodes* on page 9
- *Adding the Custom Poller to the Web Interface* on page 10
- *Troubleshooting* on page 12

## Custom Pollers Overview

SolarWinds' Orion is a network management and performance monitoring software package. This software package allows a network administrator to create custom MIB pollers for monitoring data. These pollers use SNMP values to return the requested information. Once created, a poller can be added to any similar node to be used to track real time and historical data through the Orion Web interface. This information is valuable in the administration, troubleshooting, and maintenance of a network.

Two metrics in particular may be considered of importance to network administrators. These values are the average CPU utilization over the last 5 minutes and the heap-free memory. The following table shows the SNMP values for both of these metrics.

Name	SNMP Value
Average CPU Utilization/Last 5 Minutes	1.3.6.1.4.1.664.5.53.1.4.4
Heap-Free Memory	1.3.6.1.4.1.664.5.53.1.4.8

## Hardware and Software Requirements and Limitations

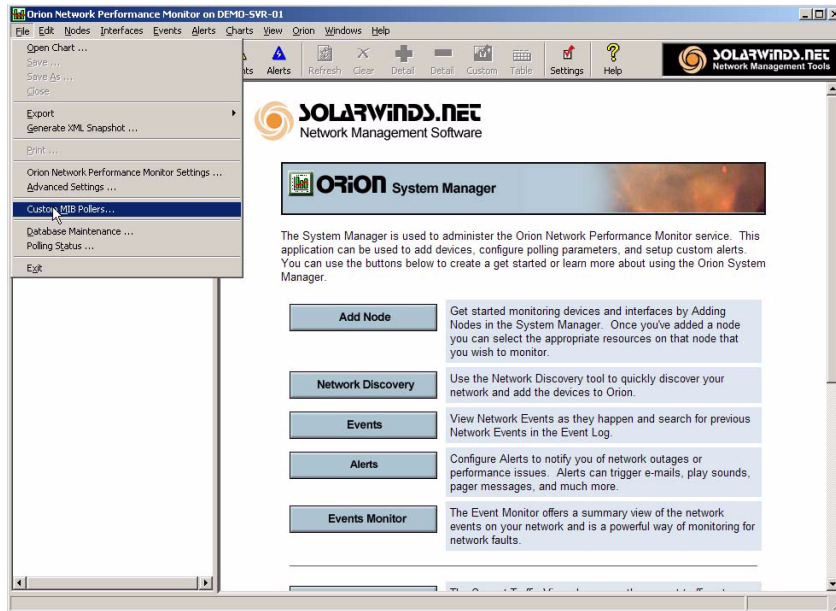
This guide is applicable for Orion software version 8.x. A new interface for adding custom MIB pollers will be added as of version 9.x. SolarWinds' Orion supports all ADTRAN NetVanta products that run ADTRAN Operating System (AOS). Orion uses SNMP to obtain its poller values. These SNMP values are consistent across all NetVanta product lines.

## Setting Up a Custom MIB Poller

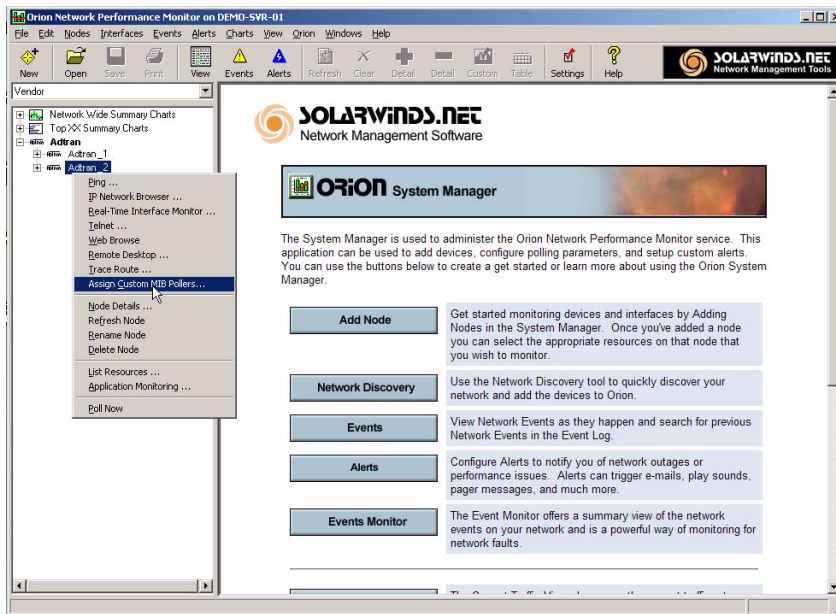
The following example will guide you through the process of adding a custom MIB poller. Applicable illustrations of the Orion software accompany each step of the process.

Step 1. Double click the appropriate icon on your computer to open the Orion Configuration Manager.

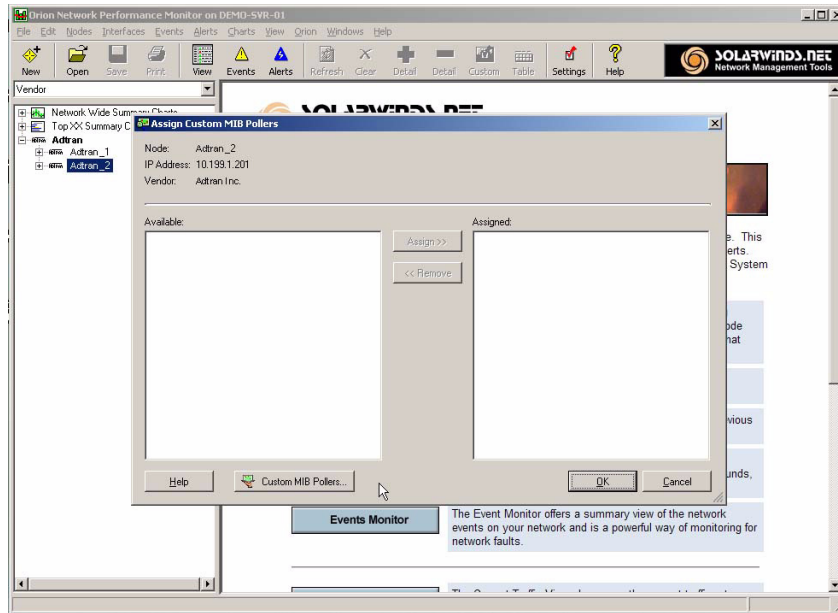
Step 2. From the **File** menu, select the **Custom MIB Pollers** option.



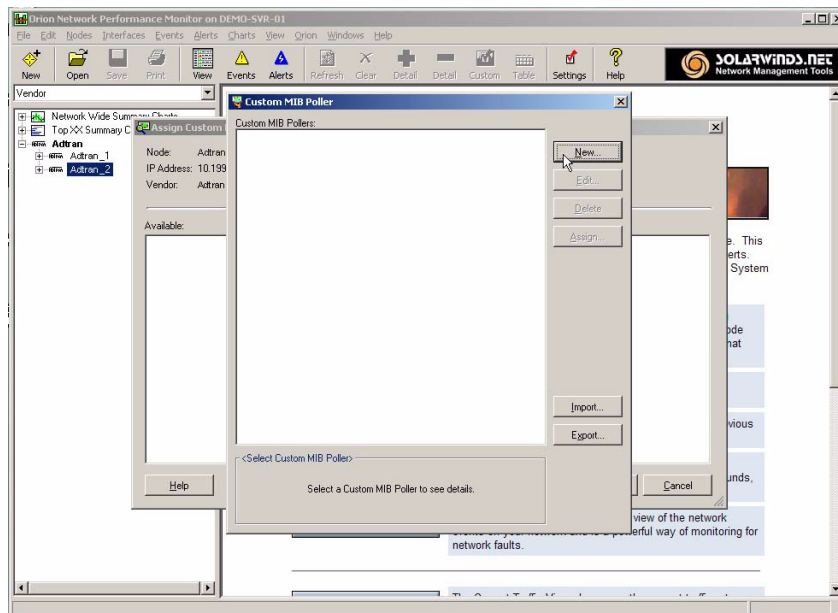
Step 3. Right click on the appropriate node in the tree located in the left column, and select **Assign Custom MIB Pollers**.



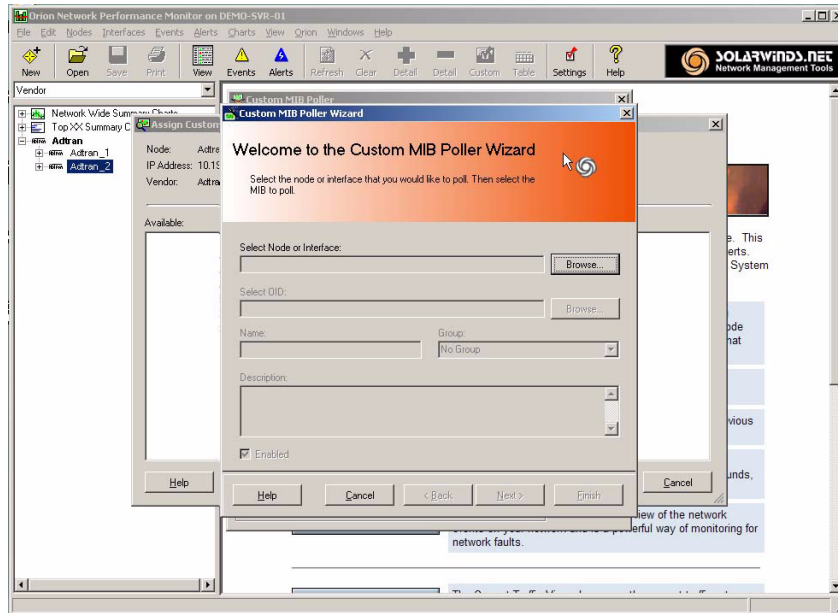
Step 4. At the bottom of the **Assign Custom MIB Pollers** window, select the **Custom MIB Pollers** button.



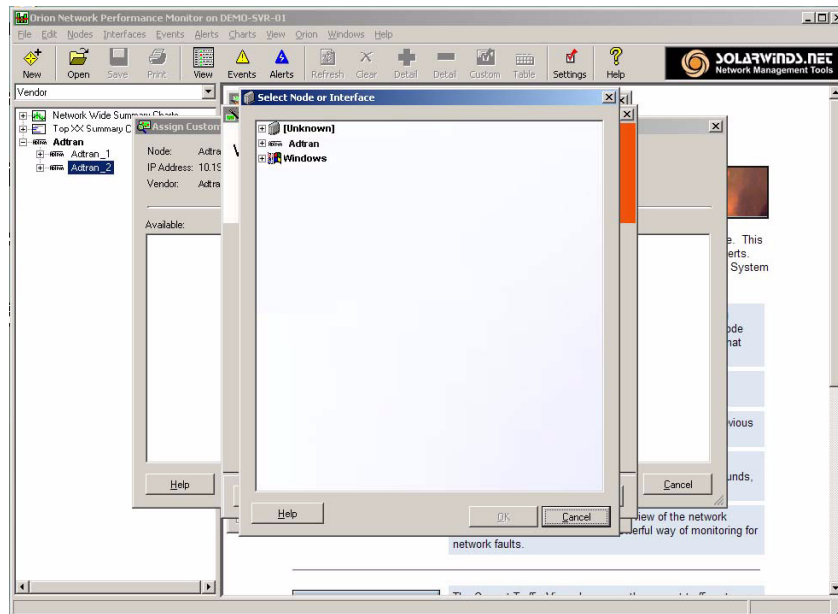
Step 5. Select the **New** button on the right.



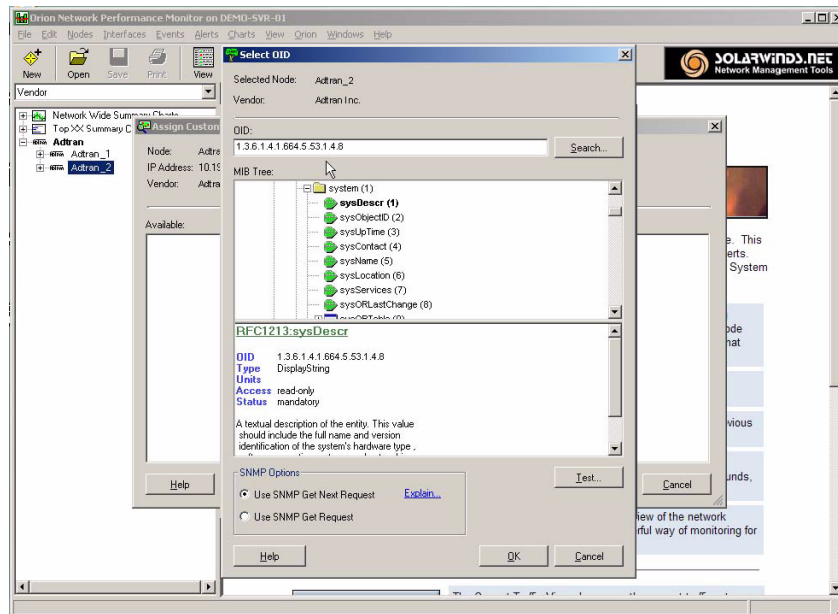
This will open the **Custom MIB Poller Wizard**. The wizard will help guide you through the process.



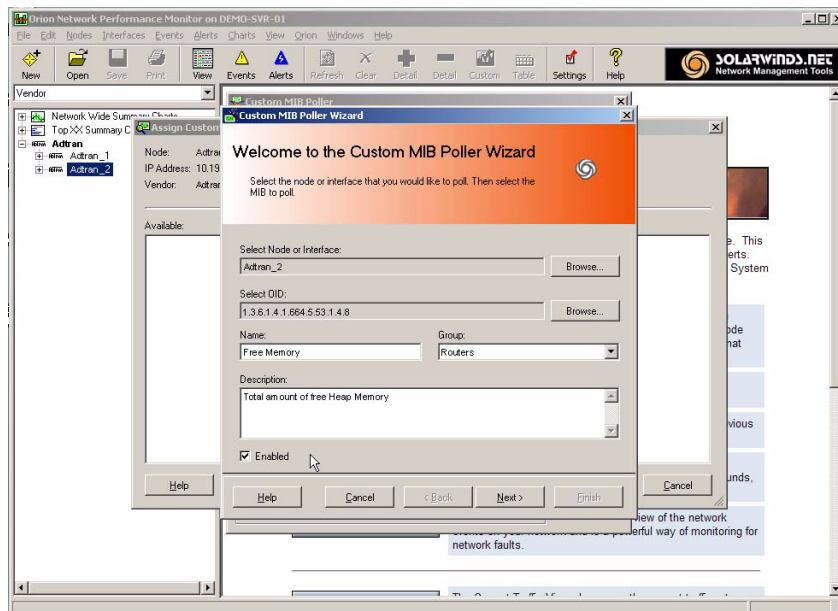
Step 6. Choose **Browse** in the **Select Node or Interface** field and navigate to the node that you wish to poll. Select **OK** when you have chosen the node to continue the wizard.



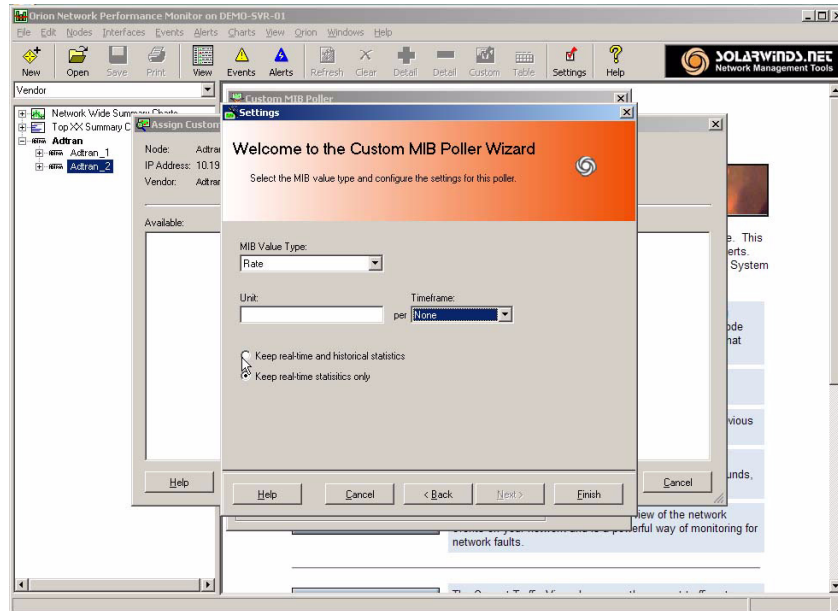
Step 7. From the wizard menu, choose **Select OID** and browse to find the OID value of interest. Select **OK** when you have chosen the OID to continue the wizard.



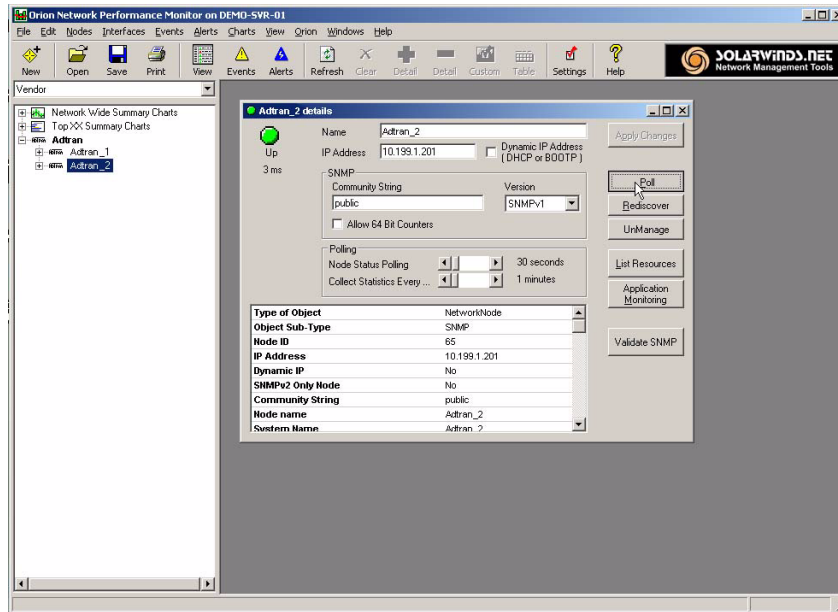
The **Name** and **Group** can be set here if desired. Make sure that the **Enabled** box is checked and then select **Next**.



Step 8. Check the **Keep Real Time and Historical Statistics** box if desired. The **MIB Value Type** can be changed. A **Unit** of measurement can be specified here, along with the appropriate **Timeframe** for the given unit. Once these options are completed, select **Finish** to close the **Settings** menu. The poller name will then be displayed in the **Custom MIB Poller** window. Select the **X** in the upper right corner of the **Custom MIB Poller** window to close it. Select the **OK** button in the **Assign Custom MIB Pollers** window to complete the wizard.



Step 9. To set the polling interval for the node, right click on the node name in the tree in the left-hand column of the interface. Select **Node Details** from the menu that pops up. The intervals can be set within the **Polling** section of this window.

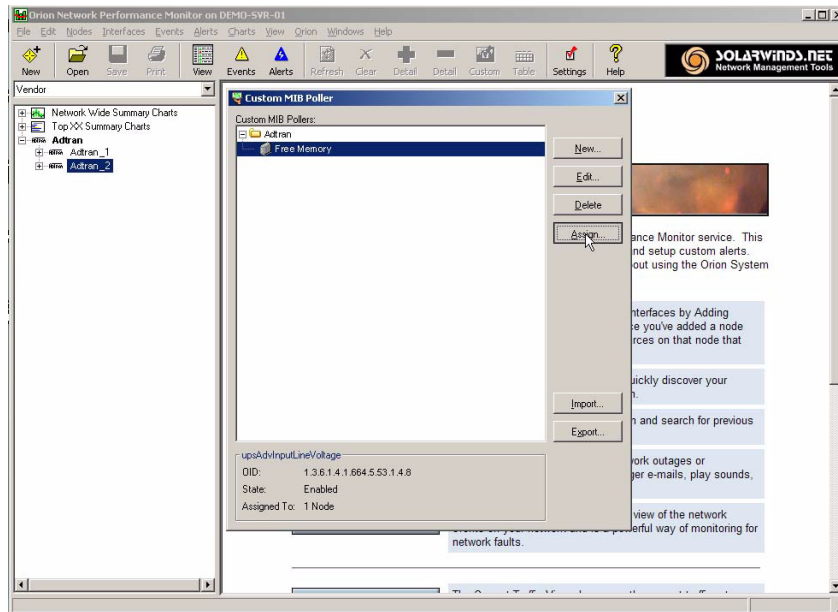




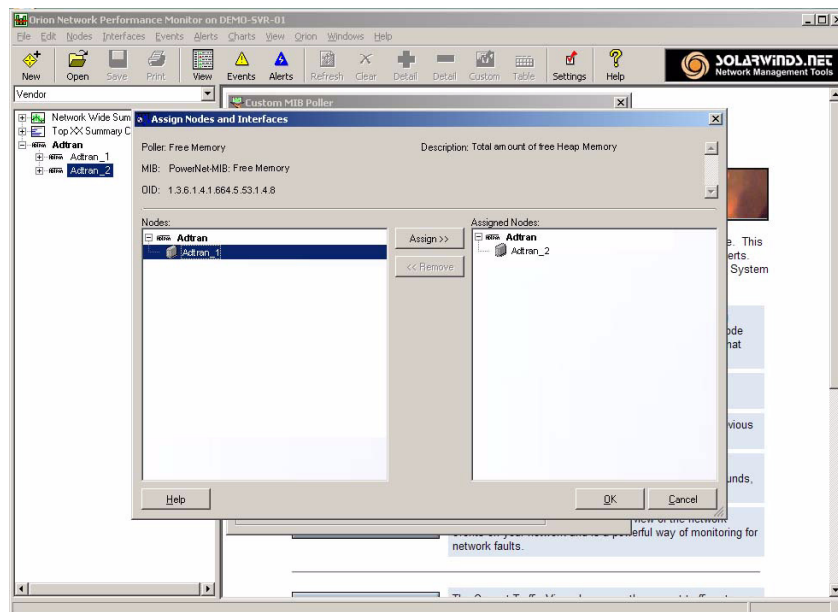
## Adding the Custom Poller to Additional Nodes

The following procedure allows any number of additional nodes to use the custom poller that has just been configured.

Step 1. From the SolarWinds Configuration Manager, under the **File** menu, select **Custom MIB Pollers**. This will bring up the **Custom MIB Pollers** window. Within this window, select the **Assign** button.



Step 2. From the list on the left, select the nodes to which you want to add the poller and select the **Assign** button. Select **OK** to close out the window and complete the task.

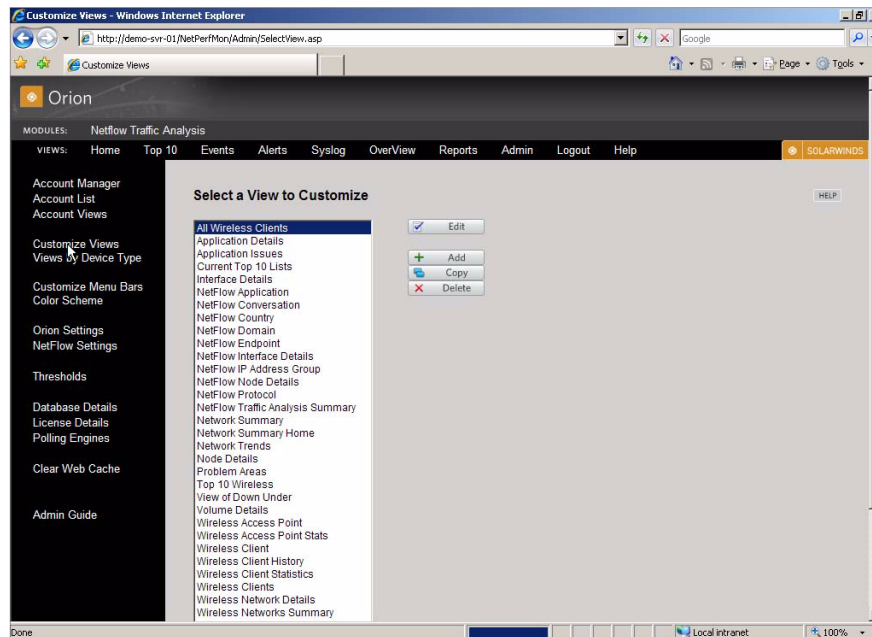


## Adding the Custom Poller to the Web Interface

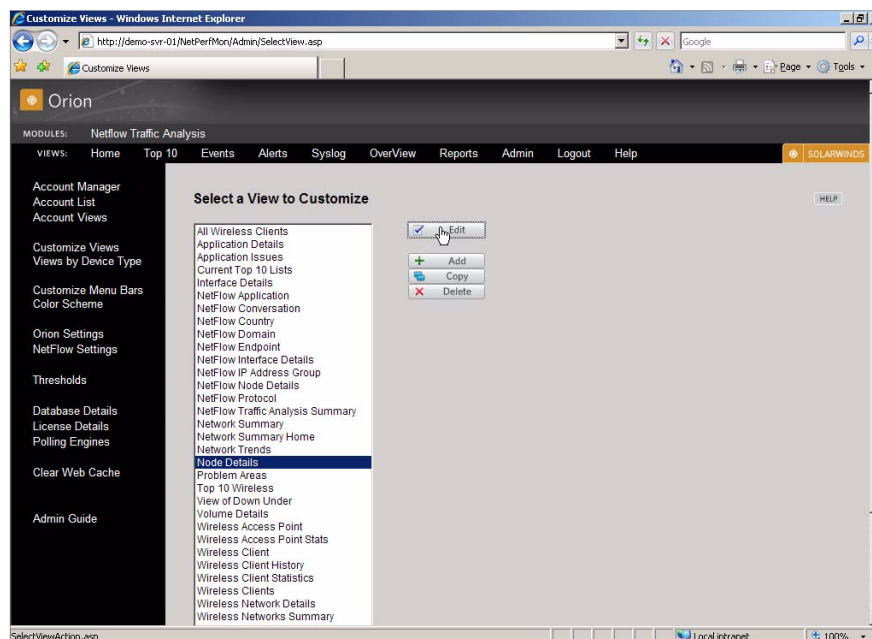
Once the **Custom MIB Poller** has been created and associated with all desired nodes, the poller must be added to the Orion Web interface. This is necessary in order to view the polling data that is now being collected.

Step 1. Open the Orion Web interface.

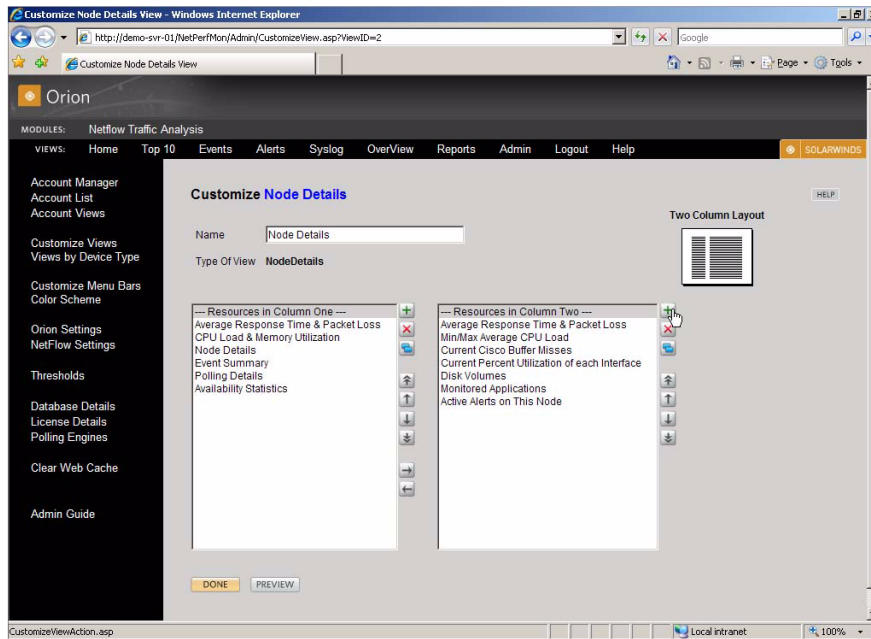
Step 2. Select **Admin** from the top menu bar and then select **Customize Views** from the left-hand column.



Step 3. Select **Node Details** from the list and select the **Edit** button.

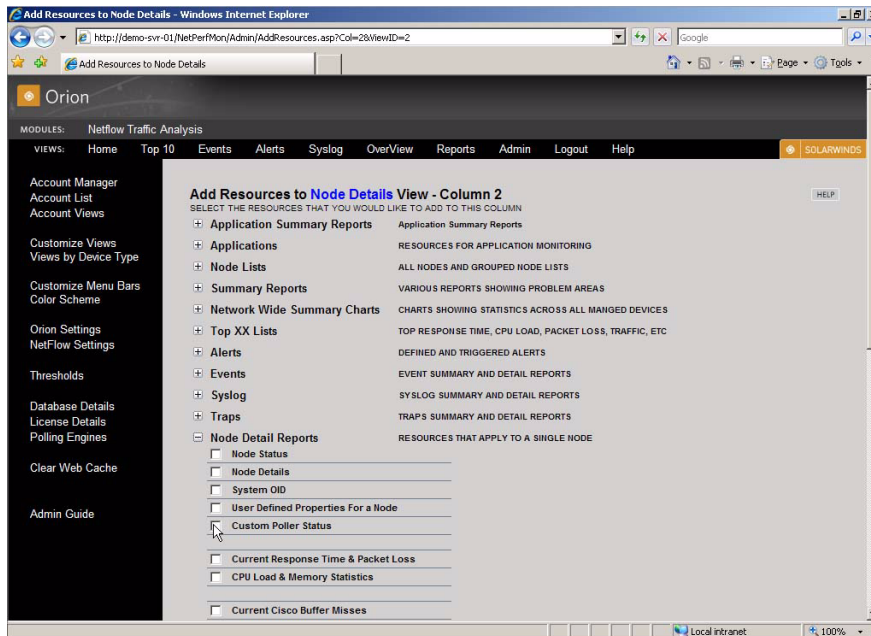


Step 4. Select the + icon next to **Resources in Column Two**.



**NOTE** *In the **Customize Node Details** window, the up and down arrows may be used to move the poller's display location on the page.*

Step 5. Select **Node Detail Reports**. Check the **Custom Poller Status** box, and then select **Submit**.



## Troubleshooting

For information on troubleshooting this process, or other information related to the functionality of the SolarWinds' Orion software, see the documentation included with your software or the online documentation available at [www.solarwinds.com](http://www.solarwinds.com).