



## NetVanta Unified Communications Technical Note

---

# Integrating IBM Lotus Domino/Notes (R7 and R8)

## 1 Overview

### 1.1 Intended Audience

This guide is intended for Lotus Notes administrators and Lotus Notes developers who have knowledge of Lotus Notes.

### 1.2 Introduction

This document describes the necessary steps required to integrate the NetVanta Unified Communications Server with IBM's Domino\Lotus Notes Release 7 and Release 8.

The UC server works with an integrated messaging client, Microsoft Exchange, Lotus Notes and other IMAP Compliant E-mail systems to provide users with a single storage and access point for voice, fax, and e-mail messages. The UC server provides full fax server capabilities including managing incoming and outgoing faxes.

Users can retrieve and manage messages either over the telephone or directly from the desktop. The UC server is designed to allow users Personal Assistant (PA) or Personal Business Assistant (PBA) mode. Clients will be able the route specific callers to one-time messages and to filter calls to their extensions by activating call transfer, active message delivery, e-mail notification and pager notification based on Calling Line ID and/or Time of Day.

The UC server integration with Lotus Domino and Lotus Notes includes the following capabilities:

1. Visual presentation of voice and fax messages in a Lotus Notes client mailbox
2. Reading e-mails over the telephone
3. Forwarding of voice and fax messages in a Lotus Notes client mailbox to another e-mail address. If the destination e-mail address is another Lotus Notes user, it will automatically retain the message properties of the original message.
4. Message Waiting Light Synchronization
5. Handset playback of voice messages

## 1.3 Integration Overview

The UC server integrates with Lotus Notes through an IMAP4 compliant e-mail server. With administrator and user configured mailboxes and passwords, the UC server deposits voice and fax messages into the appropriate IMAP mailbox. Users can either manage their voice and fax messages through Lotus Notes Mail or manage them over the telephone.

ActiveX controls are inserted into the Lotus Notes mail templates to accommodate the new voice and fax forms. The ActiveX controls allow the forms to connect to the UC server to manage message waiting lights and allow playback of voice messages over a telephone.

Lotus Notes users will be able to see the voice messages in their inbox and have the ability to play them through their PC sound card or over their telephone. They will also be able to view their fax messages without having to open additional programs.

The UC server:

1. From the UC server, create an IMAP4 server in the administration window
2. Create users that use the IMAP4 messages store
3. Users must configure their Lotus Notes username and password by using the first time access wizard.

From Lotus Notes:

1. Activate the IMAP4 server task
2. Copy the Mail7UMS or Mail8UMS template and modify the Mail7UMS or Mail8UMS template by:
  - a. Using the NetVanta provided template file
  - b. Integrating the Lotus Script code provided in Appendix A into the copy of the original mail7.ntf or mail8.ntf template file (mail7UMS.ntf or mail8UMS.ntf).
3. Migrate users to use IMAP message store.
4. Propagate the mail template (mail7UMS.ntf or mail8UMS.ntf or Mail8UMS.ntf) to your users.

## 2 UC Server Configuration

The following steps highlight the specific configuration to accommodate Lotus Notes.

### 2.1 Create IMAP4 Server for Lotus Notes

Launch the UC server administrator application

1. Select the administration pane, select the servers object.
2. Right-click anywhere in the content pane.
3. Click **New > IMAP** to open the IMAP4 Configuration dialog box.

4. Type a server name in the **Name** box. (i.e., Lotus Notes BigBang).
5. Type a host name in the **Host name or IP Address** box. This is the IP Address of the Lotus Notes server.
6. Type a port number in the **Port number** box. The default port number is 143.
7. If you want the messages that users delete to be permanently deleted, enable the **Permanently delete messages flagged for deletion** box.
8. Click **OK**.

**NOTE:** *You can add multiple IMAP servers.*

## 2.2 Creating Users for Lotus Notes

The New User Wizard steps you through the process of creating a Lotus Notes user.

### To add a Lotus Notes user

1. Start the Administrator application to obtain the Administration view.
2. Click the **Users** folder.
3. Right-click anywhere in the content pane.
4. Click **New** to open the New User Wizard, and click Next.
5. Select one of the following user types:
  - Windows User—user information and messaging options are linked with Active Directory
  - Local User—user information and messaging options are controlled by the UC server
6. Type the new user's name information in the **Name information** section of User Information box. If the user is an Active Directory user, click Browse to locate the name information.
7. Type the user's phone number information in the **Phone number information** section of the User Information box. Click Next.
8. Enter the information that is required in the Authentication dialog box. Click Next.
9. In the Messaging box, select the Lotus Notes Server from the E-Mail Storage list.

**NOTE:** *The name of the server depends on what you named it in [Create IMAP4 Server for Lotus Notes on page 2](#).*
10. Type the user's exact Lotus Notes Id name in the Mailbox box. This is typically in the format <NotesId>@<domino\_server>.<domain>.com. E.g. jsmith@domino1.company.com
11. If you know the mailbox password type and confirm the user's Lotus Notes mailbox password. If you do not know the password, enter a dummy password to be used a placeholder password until the user starts UC Client for the first time and configures their Lotus Notes mailbox password using the First Time Access Wizard.
12. Select the appropriate contact management software from the list in the Contact Management section. Click Next.

13. (For NetVanta Enterprise Communications Server and NetVanta Business Application Server) In the Phone Selection box, configure a phone for the new user. Click Next.
14. Select the answering mode for the new user by choosing one of the following:
  - **Personal Assistant** – provides standard voice mail features and is the default call answering mode
  - **Personal Business Assistant** – provides more advanced features for the user who wants to create personalized services and announcements
15. Select one of the following operator types:
  - **System**
  - **Personal**
16. View the Summary screen and click Submit if you are satisfied with the information.

## 2.3 Converting Existing Users to Lotus Notes

Editing a user allows you to convert a user's message store to Lotus Notes.

### To convert an existing user:

17. Start the Administrator application to obtain the Administration view.
18. Click the **Users** folder.
19. Double-click the user to be converted to use Domino server as their message store.
20. If the user is a Windows user, uncheck *Use Active Directory for messaging configuration* only if it is enabled.
21. Click the **Messaging** tab.
22. Click the **E-mail Storage** drop-down list and select the name of the Lotus Notes Server.  
**NOTE:** The name of the server depends on what you named it in *Create IMAP4 Server for Lotus Notes on page 2*.
23. Type the user's exact Lotus Notes Id name in the Mailbox box. This is typically in the format <NotesId>@<domino\_server>.<domain>.com. E.g. jsmith@domino1.company.com
24. If you know the mailbox password type and confirm the user's Lotus Notes mailbox password. If you do not know the password, enter a dummy password to be used a placeholder password until the user starts UC Client for the first time and configures their Notes mailbox password using the First Time Access Wizard.
25. Click OK.

## 3 Lotus Notes Configuration

The instructions include the steps required to copy the NetVanta provided template files into the following Lotus Notes master templates:

- Master template “StdR7MailUMS or StdR8MailUMS” – file name is Mail7UMS or Mail8UMS
- Master template “StdR4PublicAddressBook” – file name is pubnames.ntf. The pubnames.ntf file can be optionally modified. It is not necessary for the integration of voice and fax messages.

**NOTE:** *To perform the following activities, the user will require administrator privileges to access the Domino server and the user must also be listed as a member in the LocalDomainAdmins group document located in the Domino Directory database.*

Section 3.1 describes the method of using your existing Mail template file and making modifications (to a copy) to allow the UC server to integrate with Lotus Notes clients. This is the NetVanta recommended procedure as this ensures that any changes in the Lotus Notes mail template files are automatically incorporated into your network.

Section 3.2 describes the method of copying an NetVanta provided Lotus Notes StdR7MailUMS or StdR8MailUMS.ntf template file and incorporate it into your Lotus Notes environment. This method is a much simpler integration method but does not take into consideration any improvements, changes or enhancements in the Lotus Notes template files since the publishing of this document.

### 3.1 Modifying the mail7.ntf or mail8.ntf Template as mail7UMS.ntf or mail8UMS.ntf

Use this method if the mail7.ntf or mail8.ntf file has been modified by your organization or if there have been changes by Lotus Notes to the template file.

#### 3.1.1 Making a Copy of the Original Templates

In order to preserve the original *mail7.ntf or mail8.ntf* and *pubnames.ntf* template files, this procedure provides steps to make a copy of the original templates and allow modifications to be made to the copy of the template files.

Regardless of whether or not the *mail7.ntf or mail8.ntf* template files have been previously modified, it is recommended to modify a copy of the original template file and deploy the modified template to UC Server User Lotus Notes accounts. This will ensure that a roll-back is possible in the case of unexpected errors or failures, during or after the integration.

The following instructions will guide you through the process of customizing the aforementioned Lotus Notes master template files. To perform these tasks you must have designer access to the master templates ACL (access control list).

The first task will be to copy the original Lotus Notes template files and copy them to the data directory on the domino server machine. Using Windows explorer on the Lotus Notes server machine, locate the

C:\Lotus\Domino\Data directory (path will vary according to where the server software was initially installed).

### 3.1.1.1 *mail7.ntf or mail8.ntf*

1. Select the existing *mail7.ntf or mail8.ntf* file in the aforementioned server data directory, and copy it to the same directory, renaming the new copy to *mail7UMS.ntf or mail8UMS.ntf*. The *Mail7UMS or Mail8UMS* file will be used as the base template for UC server users.
2. Open the Notes Administrator, and ensure that the current domain corresponds to the domain for which the server is being configured. Locate the “Files” tab, and change the “Show me” value to “Templates Only” -- this will reveal, among others, the *Mail7UMS or Mail8UMS* template file.

**NOTE:** *It is likely that you will receive an error message when you load Notes informing you that templates exist that have the same name. This is as a result of copying the aforementioned templates into the same directory. The following step will resolve these naming conflicts.*

3. Open the properties dialog for the *Mail7UMS or Mail8UMS* template file. Rename the template title from *Mail (R7)* to *Mail (R7) UMS* or from *Mail (R8)* to *Mail (R8) UMS*. Locate the database design properties tab, and rename the template name from *StdR7Mail or StdR8Mail* to *StdR7MailUMS or StdR8MailUMS*.

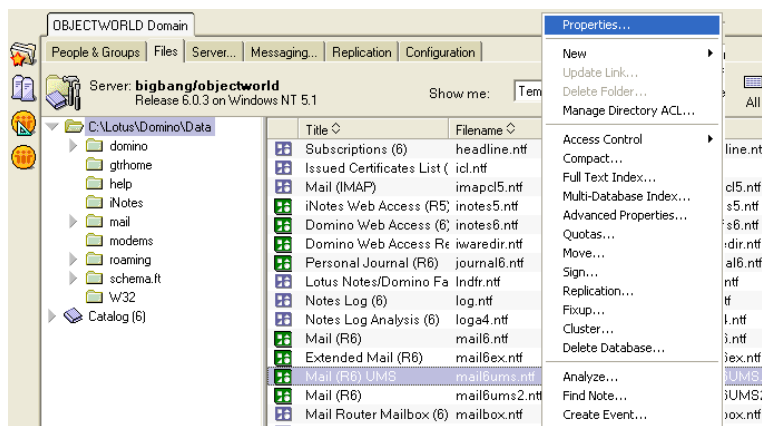


Figure 3.1

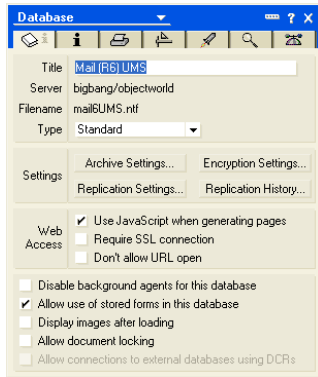


Figure 3.2

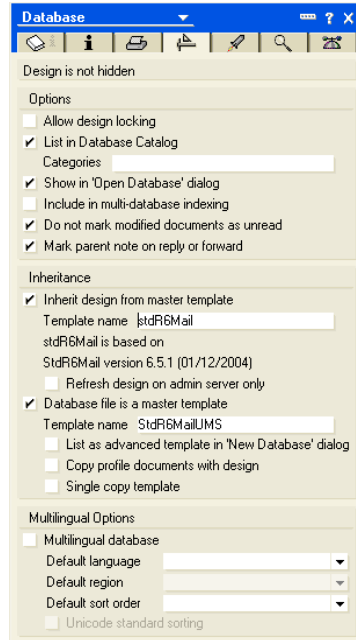


Figure 3.3

### 3.1.1.2 Pubnames.ntf

The Pubnames.ntf is an optional component that allows an agent to be executed that performs bulk changes to users.

The same steps as Section 3.1.1.1 mail7.ntf or mail8.ntf must be performed for the ld *pubnames.ntf* template file as well, except:

- In step 3 from Section 3.1.1.1 mail7.ntf or mail8.ntf, change the title from *Domino Directory* to *Domino Directory UMS*, and change the template name from *StdR4PublicAddressBook* to *StdR4PublicAddressBookUMS*.

The Domino server now contains two perfect copies of both the mail and public domino directory templates, but each copy has its own unique identifier. This document later describes how to configure all users wishing to integrate with the UC server to have their mail database files inherit their design from these new templates.

### 3.1.1.3 Modify the Mail7UMS or Mail8UMStemplate Files

Follow the detailed instructions outlined in **Appendix A** to modify the *Mail7UMS* or *Mail8UMS* and *pubnames.ntf* template files.

## 3.2 Using NetVanta Provided Mail7UMS or Mail8UMSfiles

Do not follow this procedure if you have completed the steps in Section 3.1.

From the NetVanta UC Server CD, copy the *Mail7UMS* or *Mail8UMS* and *pubnamesUMS.ntf* files to the aforementioned Lotus Notes server data directory.

Follow the steps to activate new template against specific users. The directions can be found in [Converting Users to Include IMAP4 Integration on page 12](#).

## **4 Administration Tasks and Server Configuration Settings**

The steps described in this section will accomplish the following:

- Prepare the user database to allow the UC server to access users mailboxes
- Prepare the template file to install custom controls to view voice and fax messages from the Lotus Notes client.

### **4.1 Loading the IMAP Server Task**

The IMAP Server Tasks must be started in order for the UC server to place voice and fax messages on the Lotus Notes server and to listen to e-mail messages over the telephone.

The IMAP service can be loaded either at the server console or by using the Task Start Tool (Section4.1.1). This server task starts the IMAP server capability of the Lotus Domino server.

#### **4.1.1 Loading the IMAP Server Task from the Domino Administrator Console**

1. From the Domino Administrator, select the server on which to load the IMAP task in the server pane on the left. To expand the pane, click the Servers icon.
2. Click the Server - Status tab.
3. Click Server Console.



4. Enter the following command in the command line at the bottom of the console, and then press ENTER:

Load IMAP

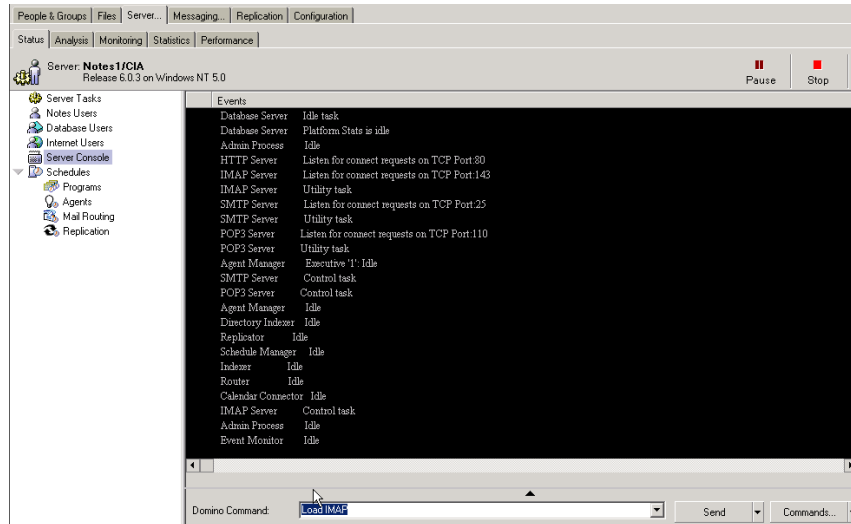


Figure 4.1

### 4.1.2 Loading the IMAP Server Task Using the Task Start Tool

From the Domino Administrator, in the server pane on the left select the server.

1. To expand the pane, click the Servers icon.
2. Click the **Server - Status** tab.
3. Select the **Server task** and right-mouse click on the Server Task.
4. Select **Start New Task**

5. Select the **IMAP Mail Server** and click **Start Task**

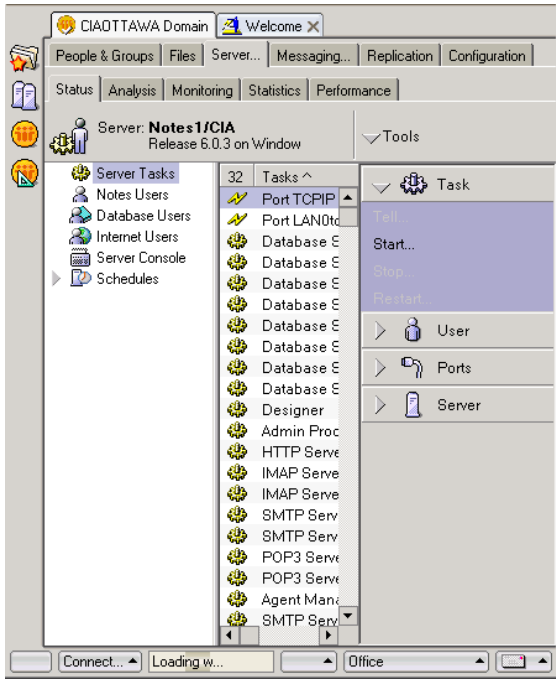


Figure 4.2

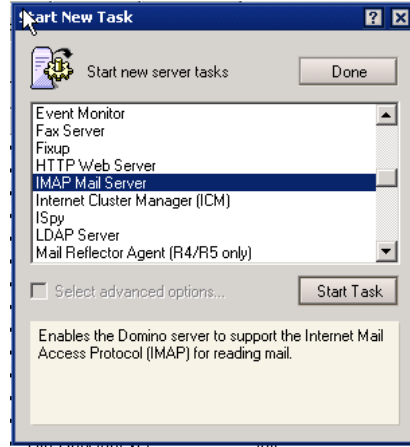


Figure 4.3

## 4.2 IMAP Server Configuration Settings

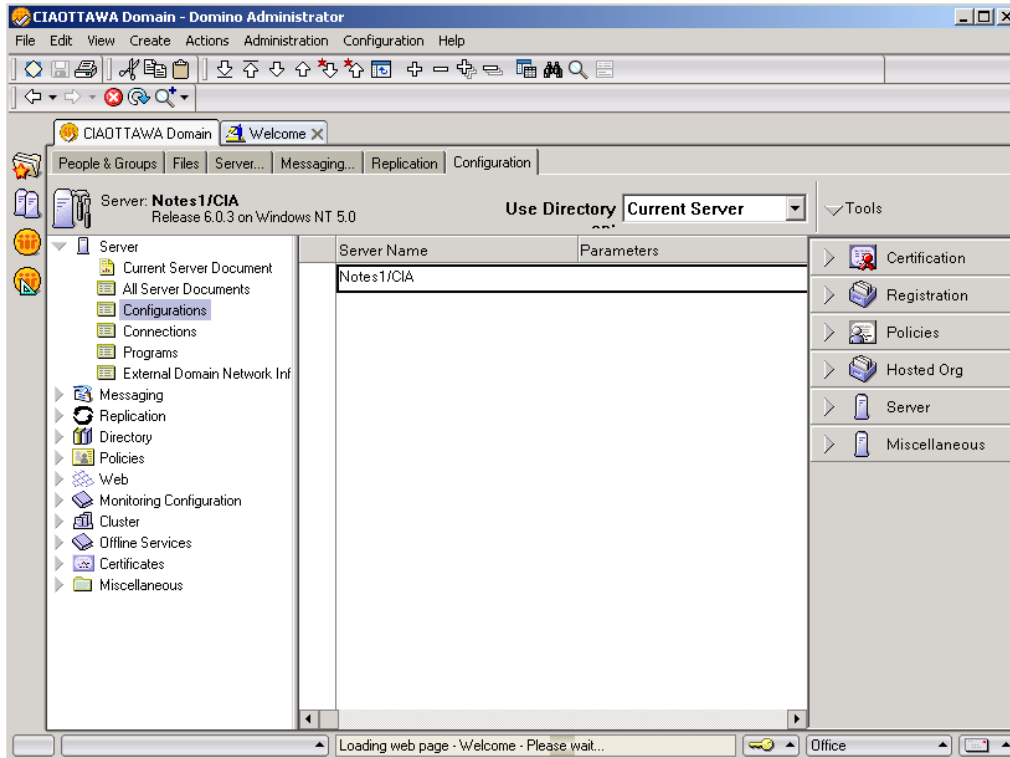
These settings enable the IMAP server to function properly when receiving an incoming email from a voice or fax server.

The following configuration settings must be entered in the server configuration settings document.

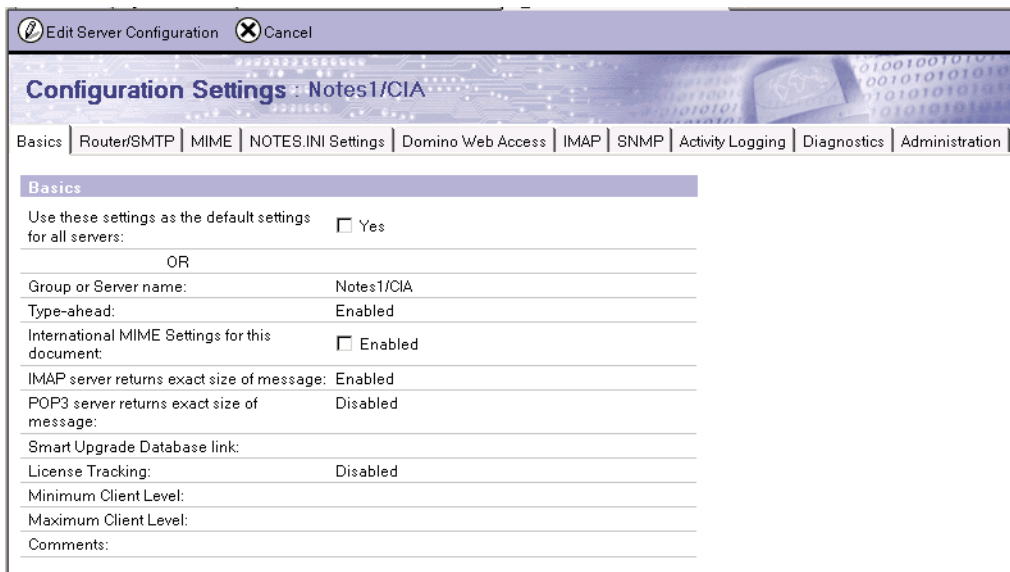
### 4.2.1 Setting the Configuration Document

From the Domino Administrator, in the server pane on the left, select the server on which to edit the document.

1. To expand the pane, click the Servers icon.
2. Click the **Configuration** tab.
3. Select **Configuration** on the left.
4. Double click the server name in the middle pane.

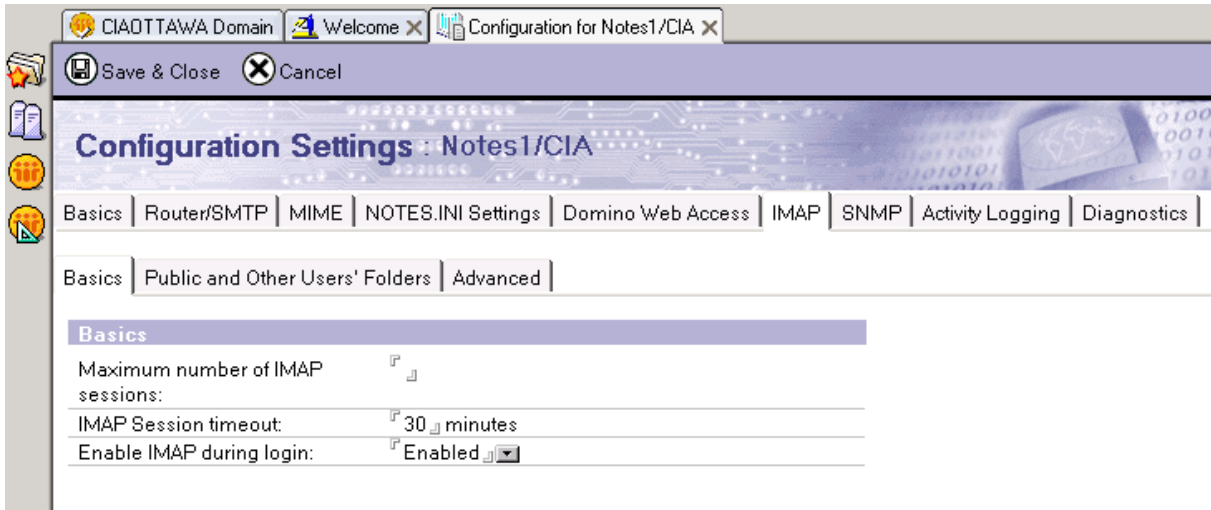


5. At the Basic tab set the “IMAP server returns exact size of message” to Enabled.
6. To edit the configuration document click the Edit Server Configuration action item at the top of the page.



7. At the IMAP tab set the “**Enable IMAP during login**” field to Enabled.

8. To save the configuration document click the Save & Close action item at the top of the page.



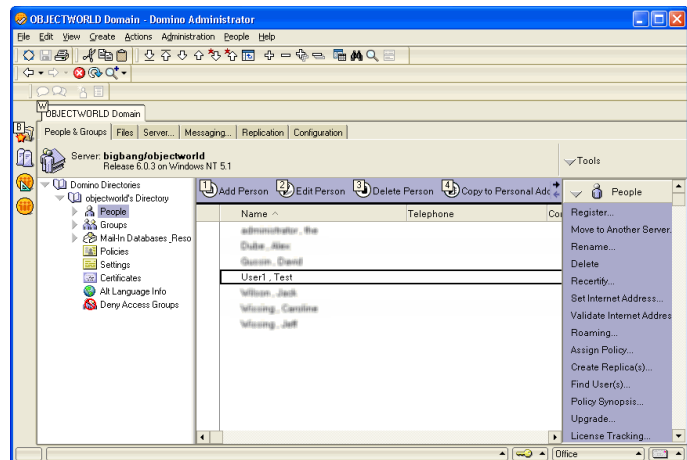
### 4.3 Converting Users to Include IMAP4 Integration

To ensure that the UC server can access, store and retrieve messages from their Lotus Notes mail database, individual user accounts must be changed to allow IMAP4 integration.

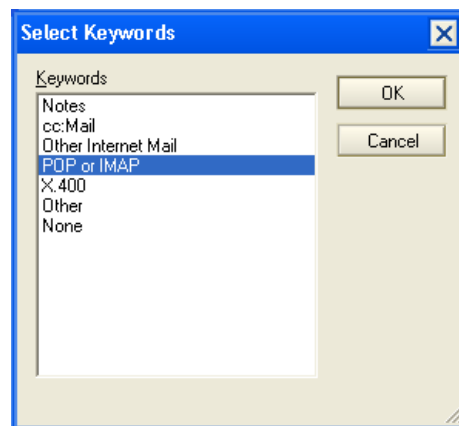
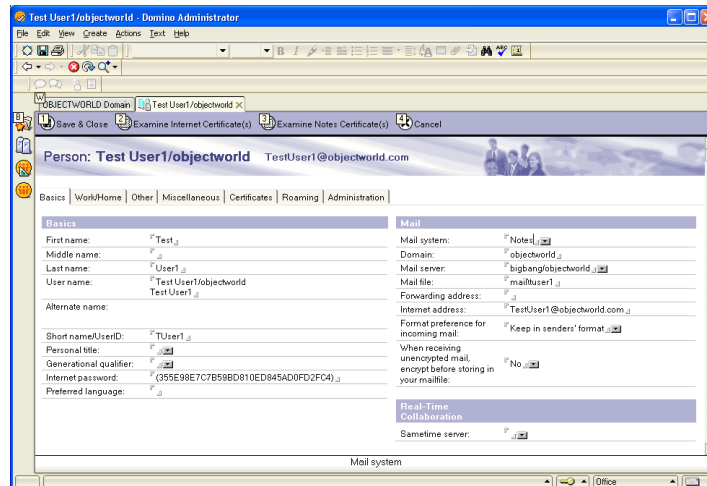
**NOTE:** You can also create a Lotus Notes agent that performs this action on more than one database.

The steps to perform this action are:

1. From the Lotus Notes Domino Administrator, select the target user that you wish to include IMAP4 integration
2. Select *Edit Person*



3. From the *mail options* selector in the Edit Person view, select POP or IMAP.



## 4.4 Indexing the Database(s)

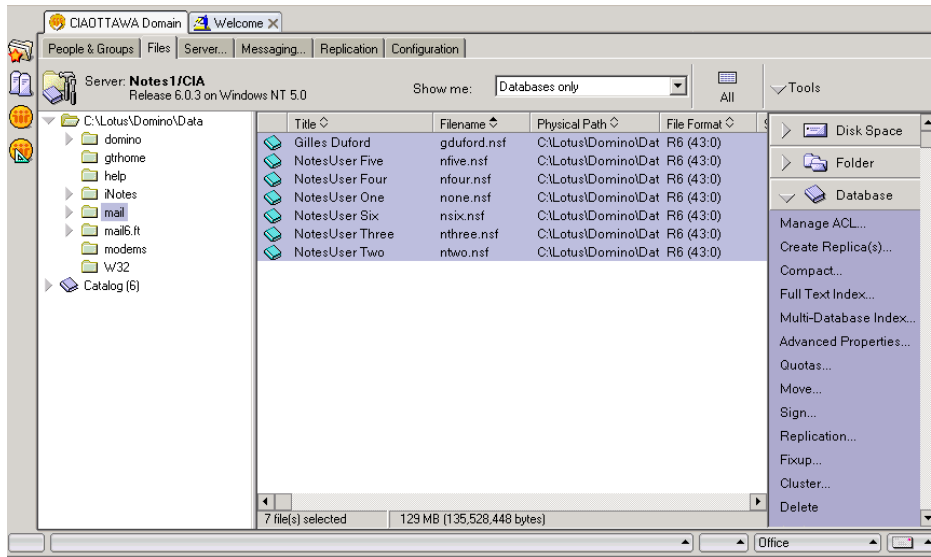
After the databases have been converted to IMAP you will need to create a full text index on all the databases which have been synchronized.

Indexing the databases allows the UC server software's search engine to determine incoming message types which are incorporated in the incoming message header when reaching the database.

You must create an Index on each server that stores mail databases.

To create an index from the Domino Administrator Tool:

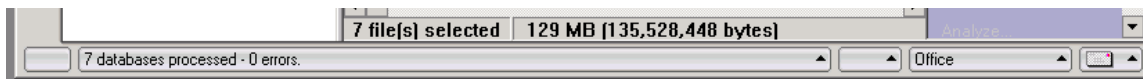
1. Make sure that you have at least Designer access in the database ACL.
2. In the Domino Administrator Server list, select the server that stores the database(s).
3. In the Files tab, select the mail sub-directory.
4. Select all the databases you want to index.
5. From the Tools pane, choose **Tools - Database - Full Text Index**.



**Figure 4.4**

6. Select **Create** (Radio Button).
7. From Index update frequency, select **Immediate**.
8. Click OK.

At the bottom of the Domino Administrator window you will find the results of your indexing process including error if any occurred.



## 4.5 Synchronizing Mail Databases with Master Template

Synchronizing the databases with the master template will update the user's mail databases with the new UC server features which are required to function with the UC server software. This involves synchronizing all of these databases with the new NetVanta master mail template.

If there are multiple Domino servers that require integration with the UC server, each server that stores mail databases must have a replica of the NetVanta master template from which they will inherit their design, and each user on those other servers must also inherit the design from the NetVanta master template.

You can run the convert task by using a Console Command. There are other ways to start the convert task for synchronizing the master templates; consult the Lotus Notes documentation for more information.

The following sections give step by step instructions on how to convert a user mail database to inherit its design from the modified StdR7MailUMS or StdR8MailUMS template.



## 4.5.2 Running the Convert Task Using a Console Command

From the Domino Administrator, select the server on which to run convert in the server pane on the left. To expand the pane, click the Servers icon.

1. Click the Server - Status tab.
2. Click Server Console.
3. Enter the following command:

```
Load convert mail/*.nsf stdR7Mail mail7UMS.ntf
```

```
Load convert mail/*.nsf stdR8Mail mail8UMS.ntf
```

Alternatively, you can also specify individual mailboxes in the load convert command.

```
load convert mail/user.nsf stdR7Mail mail7UMS.ntf
```

```
load convert mail/user.nsf stdR8Mail mail8UMS.ntf
```

In the command line at the bottom of the console, and then press ENTER.

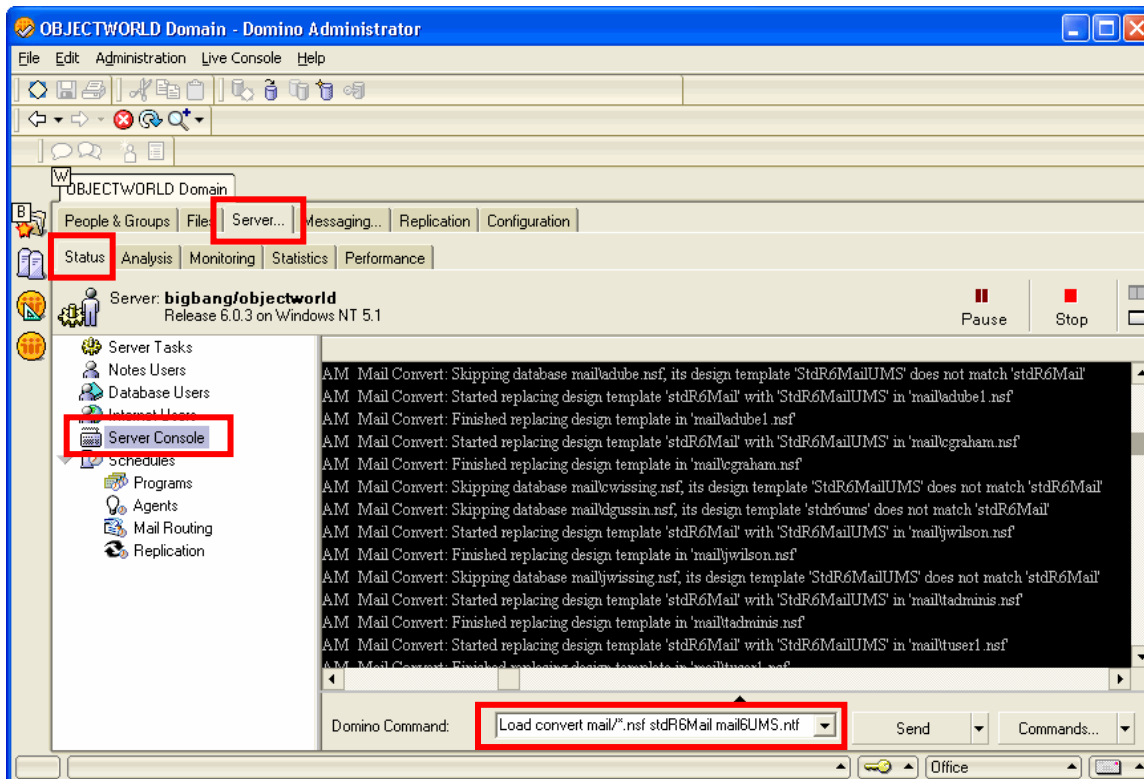


Figure 4.5



### 4.5.2.1 Command Line Options

The following table describes the command line options you can use with the convert task.

```
load convert [-r | -l | -f | -m | -e | -u | -s] mailfilepath existingtemplatename newtemplatefilename
```

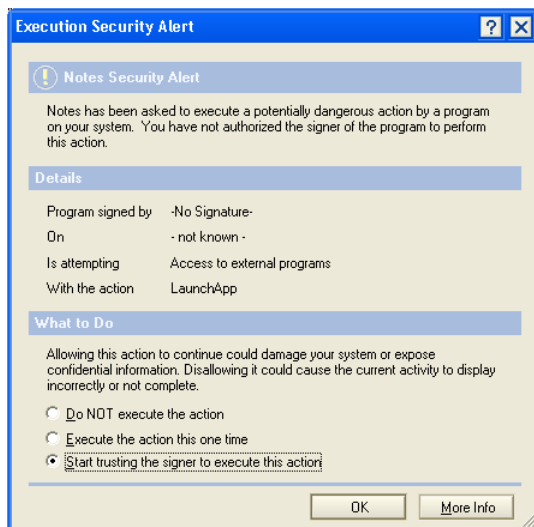
where -r converts mail files in subdirectories of the specified directory, -l creates a text list of mail files, -f uses a text list of mail databases to determine which mail files to upgrade, -m converts the file or files for IMAP use in Notes 5, -e converts the file or files for IMAP use in Notes 7, -u converts all custom folders to the Inbox design, and -s upgrades folders created without the Preserve bit set. Mailfilepath specifies which mail file or files to upgrade, existingtemplatename specifies a certain mail file design (for example, only mail files using Notes 5 design) to upgrade, and newtemplatefilename specifies the template with which to upgrade the mail files.

## Using Lotus Notes

Once the Lotus Notes templates have been modified and assigned to individual mail databases, the general use of the Lotus Notes is described in this section.

## 4.6 Security Alerts

Each user's Lotus Notes client will pop up a security warning for each of the modifications included in the Lotus Notes Mail Template file.



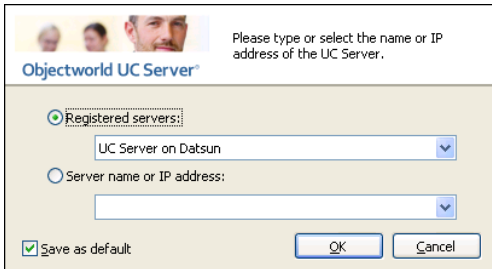
For seamless integration, ensure that the user selects 'Start trusting the signer to execute this action', otherwise the user will always be prompted with this security warning.

## 4.7 Launching Lotus Notes

Each time you launch the Lotus Notes client, it will attempt to connect to the UC server. The first time you do this, the UC server will prompt you for the location of the UC server. This is the machine name or

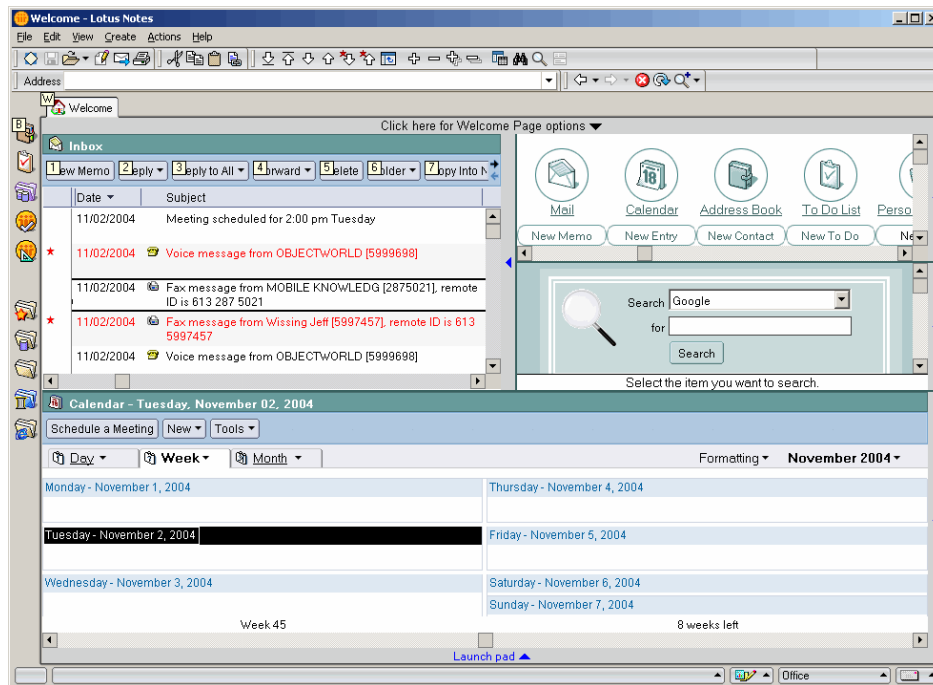
IP Address of the UC server. Ensure that you select the ‘Save as default’ option to automatically select the UC server location.

Once the server has been selected, enter your user name and password. With Active Directory integration there is single sign-on. Ensure that you select the ‘Save as default’ option to automatically log in to the UC server the next time you launch Lotus Notes.



## 4.8 Managing Messages

Incoming voice and fax messages will appear in the Lotus Notes application.



Voice

Lotus Notes will automatically associate custom icons for voice and fax messages.



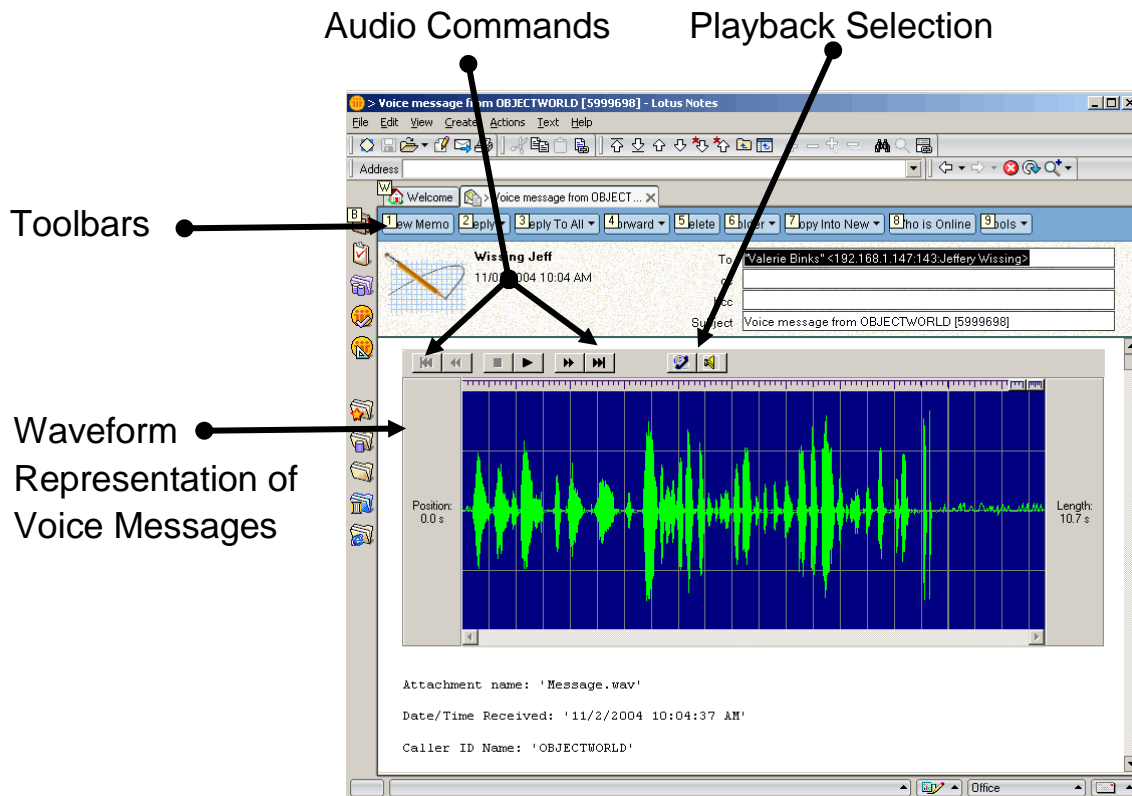
Fax

Opening the voice or fax message will reveal the mail template modifications outlined in Section 4.

## 4.8.1 Incoming Voice Messages

Opening a voice message will reveal the following form and client plug-in. If a voice message does not appear as follows, locate the symptom and troubleshooting step in [Appendix C Common Error Symptoms](#).

The form allows you to select playback type – associated telephone handset or speaker phone. The waveform representation allows highlighting and selection of a section of audio for playback.

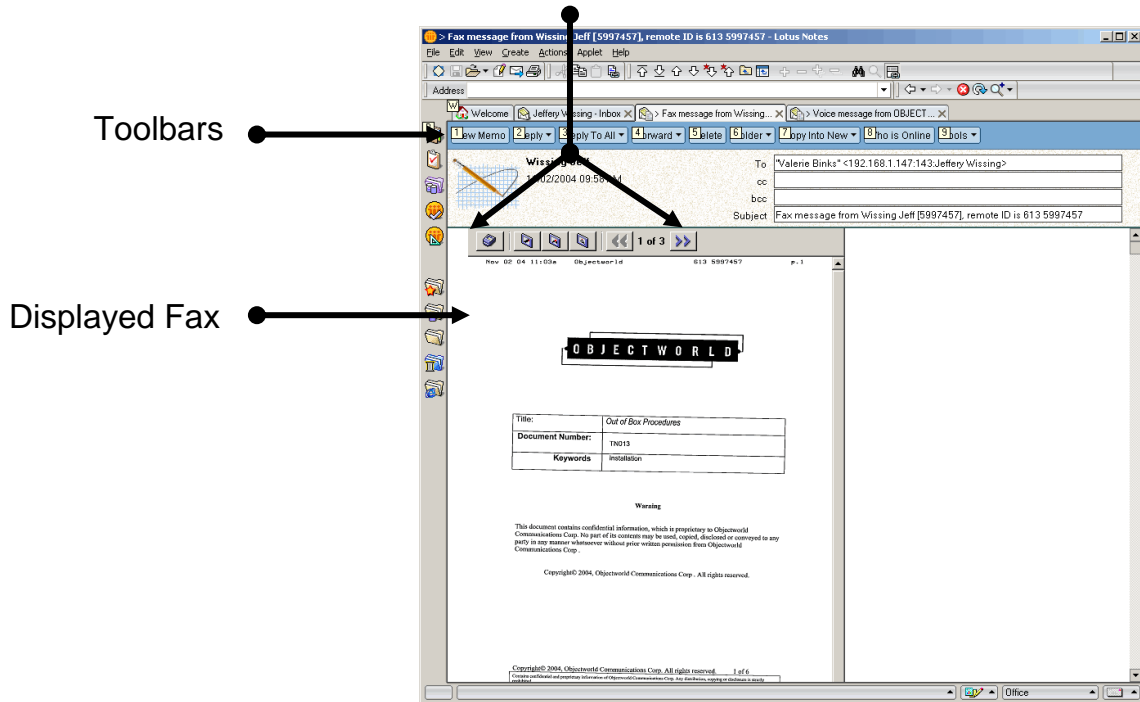


## 4.8.2 Incoming Fax Messages

Opening an incoming fax message will reveal the following form and client plug-in. If a fax form does not appear as follows, locate the symptom and troubleshooting step in [Appendix C Common Error Symptoms](#).

The form allows you to print to a configured printer on your computer, scale the fax image, or navigate to different pages of the received fax document.

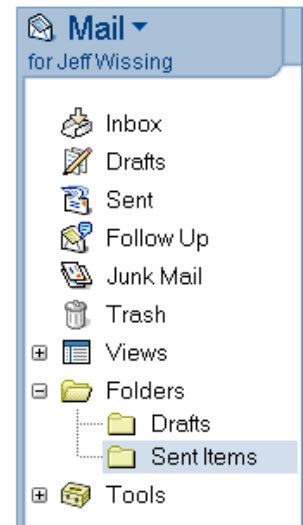
## Viewing Commands



### 4.8.3 Sent Items – Fax Transmission reports

Faxes that are sent from the client computer are automatically deposited into a 'Sent Items' folder.

The sent items folder that is used by Lotus Notes IMAP is not the same as the Lotus Notes 'Sent' Folder. In order to review your fax transmission reports, you may have to create a folder called 'Sent Items'



## **Appendix A Designing the Master Templates**

Removed for brevity.

## **Appendix B Migration from Previous Template Revisions**

Appendix B describes the changes from previous versions of this document.

### **B.1. Migration Strategy from TN014-Revision 5 to TN014-Revision 7**

THIS SECTION ONLY APPLIES TO INTEGRATIONS THAT ARE BEING MIGRATED FROM REVISION 5 (OR EARLIER). IF THIS IS A NEW INSTALLATION, SKIP TO THE NEXT STEP.

If this integration is a migration from Revision 5 of this document (or earlier), then you must first remove the code from the following \$Inbox functions:

- (\$Inbox) (Globals) – Declarations
- (\$Inbox) (Globals) – Initialize
- (\$Inbox) (Folder) – Postopen
- (\$Inbox) (Folder) – QueryClose

\*\*\*\*\*NOTE: DO NOT REMOVE THE CODE FROM the (\$Inbox) (Folder) « Form Formula » function \*\*\*\*\*

Once the \$Inbox material has been removed, add the Lotus Script.

## Appendix C Common Error Symptoms

**Symptom** I do not receive voice or fax messages in the Lotus Notes client

**Solution** See Synchronizing your password with Lotus Notes and verify that the user has full text index enabled on the user's mail database file.

**Symptom** I hear the message 'We are unable to access your mailbox' when attempting to listen to messages over the telephone.

**Solution** See Synchronizing your password with Lotus Notes and verify that the user has full text index enabled on the user's mail database file.

**Symptom** I changed my Lotus Notes password and now I do not receive voice or fax messages.

**Solution** See Synchronizing your password with Lotus Notes and verify that the user has full text index enabled on the user's mail database file.

**Symptom** I launched my Lotus Notes client and I do not see the voice or fax forms.

**Solution** Ensure that you have followed the procedures for rolling out the modified Mail template file to this user.

**Symptom** How can I change the size of the voice and fax viewers in the Lotus Notes Client

**Solution** Using the Lotus Notes Designer tool, open the NetVanta\_Fax or NetVanta\_Voice document and perform the following.

- Highlight the NetVanta Control. Just click to the left of the inserted OLE Object and ensure that it is selected in the window.
- From the Properties pane, locate the CAWaveCtrl object  Properties and change the height and width parameters.

### C.1. Synchronize your Password with Lotus Notes

Lotus Notes maintains two different passwords internally; Lotus Notes and Internet Password. The Lotus Notes password is used exclusively with the Lotus Notes client. The Internet password is used for all other login authentications using internet protocols. This list includes: Web access, POP, and IMAP4.

When you change your Lotus Notes password it does not automatically change your internet password. The internet password is changed from the web client or by modifying the internet password in the person document.

When a user is created (Registered) with Lotus Notes there is an option to synchronize the Internet password with Lotus Notes. This synchronization only occurs when the user is created. Outside of the original creation, the passwords must be individually managed.

Verify your IMAP user name. Lotus Notes maintains a list of aliases as well as the proper Lotus Notes user name. Ensure that you are using one of the Lotus Notes names listed in the person document.

### C.1.1. Change your IMAP4 Password in the UC Server

To change your IMAP password as registered in the UC server, perform the following:

1. Launch the UC server client. Log in as the Lotus Notes user username and telephone password.
2. Select **Tools > Options**.
3. Select the **External Systems** tab.
4. Ensure that the information in the IMAP **mailbox management** section is correct.
5. Click on the **password** button, and enter the new Lotus Notes internet password.

## C.2. Testing your IMAP4 Connection with Lotus Notes

From the Windows CMD prompt, type 'TELNET <LOTUS NOTES SERVER> 143'

Each interaction with the IMAP server must begin with a unique identifier. In this example, sequential numbers starting from 1 are used.

### C.2.1. Verify Username and Password

Type 1 login "<Lotus Notes Username>" <internet password>

The IMAP4 server should respond with 1 OK LOGIN completed. If the following error is seen, 'NO LOGIN invalid user name or password' then the wrong username, password or both. Verify the information on the Lotus Notes server.

The following is a list of command and server responses. The 1st command is to simply logon to the Lotus Notes IMAP server. The 2<sup>nd</sup> command is to retrieve a list of mail directories on the Lotus Notes server. Note that IMAP servers treat the backspace key as a valid ASCII character. If you make a mistake, start a new line number and type more carefully.

```
* OK Domino IMAP4 Server Release 7.0.0 ready Tue, 24 May 2005 14:21:25 -0400
1 login "Jack Wilson" password
1 OK LOGIN completed
2 list "" ""
* LIST (\HasNoChildren) "" Drafts
* LIST (\Noinferiors \HasNoChildren) "" Inbox
* LIST (\HasNoChildren) "" "Sent Items"
* LIST (\Noinferiors \HasNoChildren) "" Trash
2 OK LIST completed
```

**To disconnect from the IMAP server, type**

```
3 logout
* BYE logging out
3 OK LOGOUT completed
```