



# T-Watch PRO

## T1 CPE Management Software for Windows®

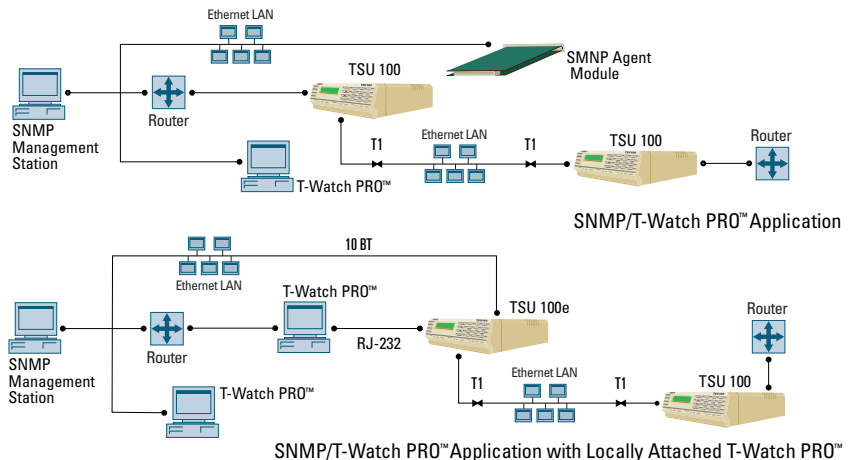
### Product Features

- Graphical or numeric performance reports
- Support for all T1 CPE products from ADTRAN
- Integrated Telnet client for managing ATLAS 800
- Local and remote network/DTE tests easily invoked
- Access to historical alarm events
- Simplified bandwidth assignment
- Local, 8k data inband, FDL or modem connection to TSU devices
- LAN access to SNMP Agent Module or 'e' series
- Automatic performance polling
- Full Help files
- On-line manual

ADTRAN T-Watch PRO™ is a PC-based management software package for the TSU series of T1/FT1 DSU/CSUs, T1 CSU products and the ATLAS 800 system. T-Watch PRO allows the user to configure multiple T1 CPE devices from a single central control point, including the T1 network interface and all module data terminal equipment (DTE) interface parameters. Through comprehensive network monitor functions, T-Watch PRO automatically collects alarm conditions and unit status information from any remotely located TSUs. While performance data may be obtained manually from each TSU, automatic performance monitoring allows each unit to be polled daily for performance information at a user-specified time. T-Watch PRO also allows the user to retrieve the current status and performance data at any time. The performance measurement, stored as files by T-Watch PRO, can be used to create tabular and graphical reports which aid in tracking T1/FT1 network performance.

T-Watch PRO can be used to enhance management of TSU products in SNMP-managed networks. The software can send management commands across the LAN to an ADTRAN TSU unit supporting SNMP. An SNMP management station can monitor and report alarm conditions (traps), while T-Watch PRO, through its extensive configuration and performance monitoring features, can be used to troubleshoot the condition. T-Watch PRO can also be used to manage networks that include ADTRAN's ATLAS 800 integrated access system. A Telnet session can be launched from within T-Watch PRO to manage ATLAS, while preserving all of T-Watch PRO's management features with downstream TSUs.

The TSU (T1 Service Unit), TSU LT, TSU ESP, TSU 100e, TSU 120e, TSU 600e and TDU 120e are intelligent, full-featured T1 DSU/CSUs, designed to interface customer DTE to T1 or fractional T1 services. ATLAS 800 is a full-featured, modular integrated access platform supporting multiple T1 interface along with a wealth of host site features.





**ADTRAN, Inc.**  
Attn: Enterprise Networks  
901 Explorer Boulevard  
Huntsville, AL 35806

P.O. Box 14000  
Huntsville, AL 35814-4000

256 963-8000 voice  
256 963-8699 fax  
256 963-8200 fax back

**General Information**  
800 9ADTRAN  
info@adtran.com  
www.adtran.com

**Pre-Sales  
Technical Support**  
800 615-1176 toll-free  
application.engineer@adtran.com  
www.adtran.com/support

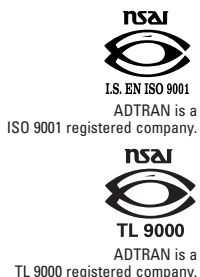
**Where to Buy**  
877 280-8416 toll-free  
channel.sales@adtran.com  
www.adtran.com/where2buy

**Post-Sales  
Technical Support**  
888 423-8726  
support@adtran.com  
www.adtran.com/support

**ACES Installation &  
Maintenance Service**  
888 874-ACES  
aces@adtran.com  
www.adtran.com/support

**International Inquiries**  
256 963 8000 voice  
256 963-6300 fax  
international@adtran.com  
www.adtran.com/international

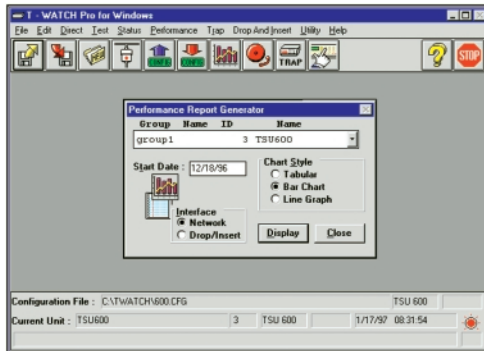
**For the regional office  
nearest you, visit:**  
www.adtran.com/where2buy



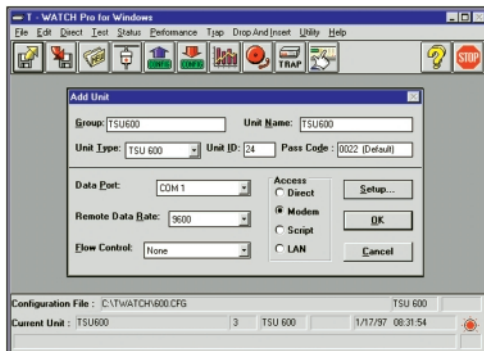
Printed in the U.S.A.  
61950010L3-8H May 2002  
©2002 ADTRAN, Inc. All rights reserved.

# T-Watch PRO

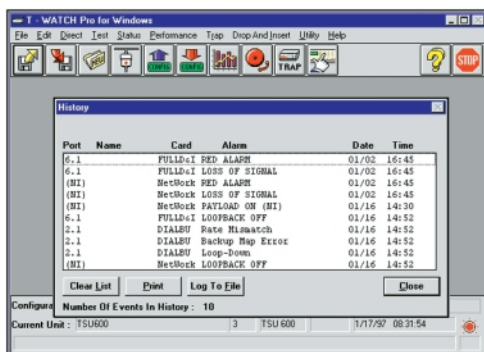
## T1 CPE Management Software for Windows®



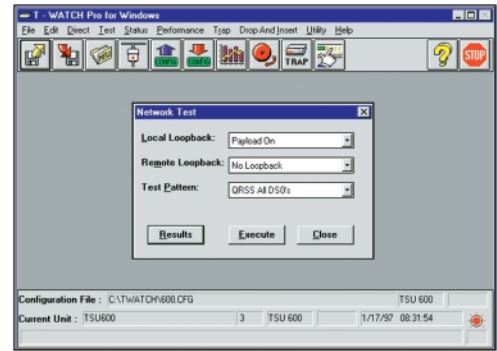
- Logged performance data can be used to generate numerical or graphical performance reports.



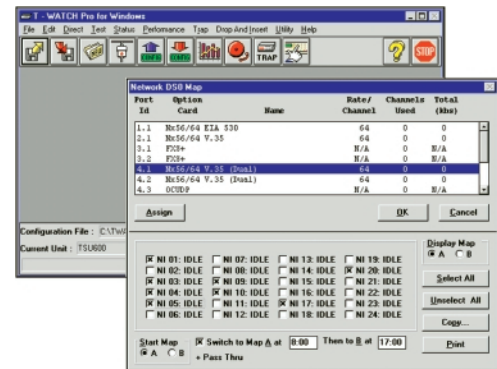
- TSU devices are accessed by direct connection, in-band (ESF FDL), or modem connection.



- Unit historical information with Time/Date stamps is readily accessible.



- Local and remote tests are easily invoked with a few mouse clicks.



- Assignment of bandwidth to various DTE ports

## Product Specifications

### System Requirements

- PC compatible (486 or better)
- 3.5 floppy drive
- 8 MB RAM minimum
- 6 MB available hard drive
- Available external serial port
- Ethernet card for LAN connections

### Operation Systems

- Windows® 3.1
- Windows 95
- Windows 98
- Windows NT

## Ordering Information

Equipment	Part #
T-Watch PRO™	1950010L3
T-Watch PRO Upgrade	1950010L4

Specifications subject to change without notice. All registered trademarks and trademarks mentioned in this publication are the property of their respective owners.