



## Using ADTRAN ISU® Products With Windows NT® 4.0 Running Remote Access Services (RAS)

---

### Introduction

The information in this Technical Support Note will enable anyone to setup ADTRAN ISU products into the Windows NT 4.0 operating system for use in Remote Access Service (RAS).

### Before You Begin

- This Technical Support Note does **NOT** cover installation of Remote Access Service (RAS) or Dial-Up Networking into the Windows NT 4.0 operating system and assumes that these services are already installed. For assistance in installing these services refer to the Microsoft Windows NT 4.0 on-line help.
- This Technical Support Note does **NOT** cover installation of ADTRAN ISU products into Windows NT 4.0. It assumes that you have already installed ISU support into the Windows NT 4.0 operating system. For details in doing this see KB Article # 1549.
- With some ADTRAN products like the ADTRAN Express XR® and the Express XRT®, data rates of 230.4 kbps are possible. This data rate will require the installation of a serial card that uses a 16650 UART chip-set. This Technical Support Note assumes that you are using a 16650 UART that is already installed.
- This Technical Support Note does **NOT** discuss the configuration of ADTRAN ISU devices into the Windows NT 4.0 application of Dial-Up Networking). For details on configuring ISU products in this application see KB Article # 1649.

### Adding An ISU Product to RAS

To add an ISU device or an Express product to the RAS services in Windows NT 4.0, do the following

(These instructions are written from the standpoint of someone replacing an analog modem with an ADTRAN ISU device. For new install instructions see the Windows NT 4.0 on-line help for modem installation.):

1. Right-click on **Network Neighborhood** and click on **Properties**.
2. Click on the **Services** tab (see **Figure 1**).
3. Select **Remote Access Service** and click the **Properties** button as in **Figure 1**.

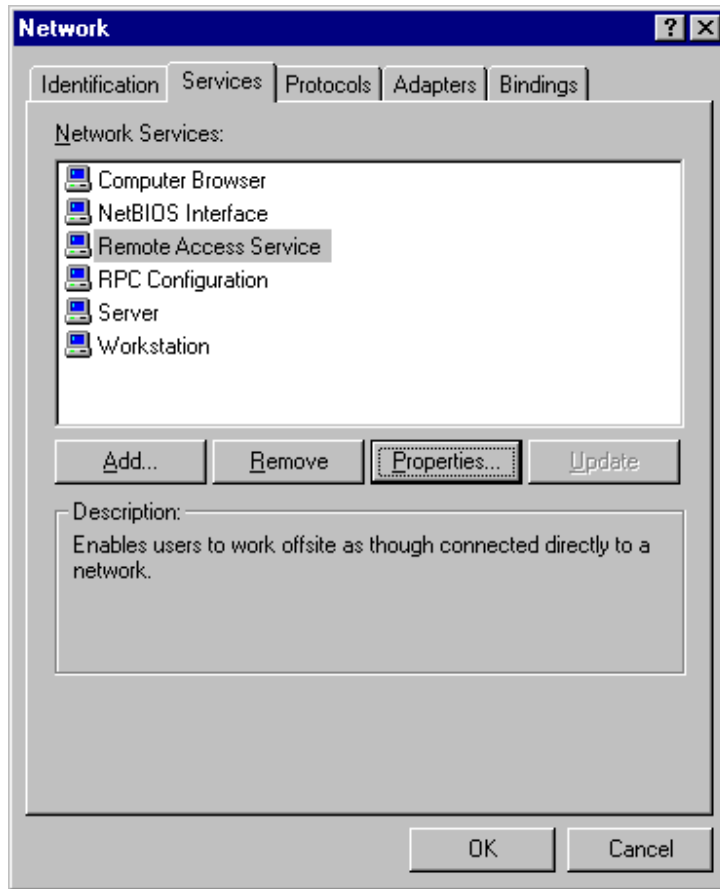


Figure 1: Network Properties

4. You may not see the intended ADTRAN ISU device on the desired COM port. To remove an unwanted device, select the device and click the **Remove** button (see **Figure 2**).

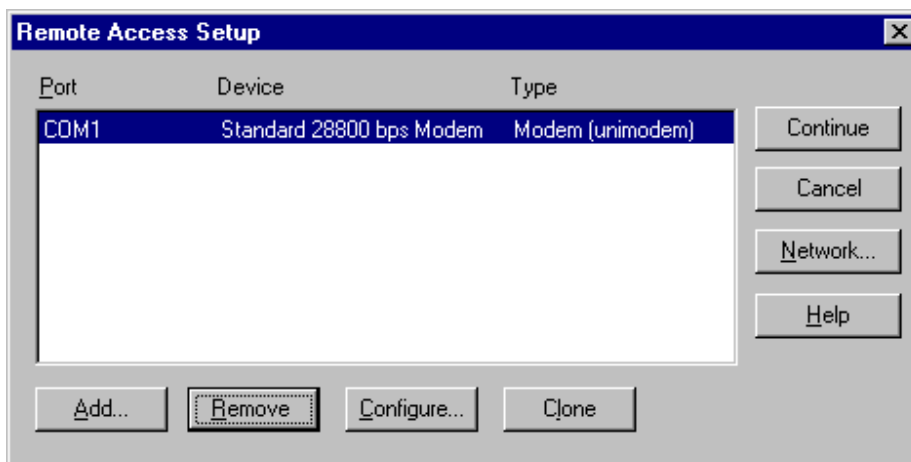


Figure 2: Remove Modem from RAS

5. Click the **Yes** button when asked to remove the COM port that the previous device was installed on (see **Figure 3**).

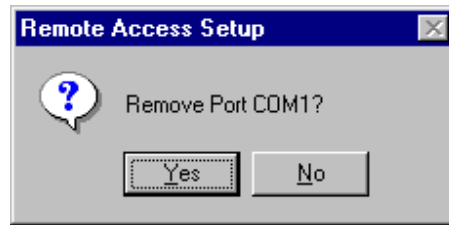


Figure 3: YES to Remove Modem

6. Now you are ready to add a new device. Click the **Add** button.
7. From the **RAS Capable Devices:** pull down box, select the ADTRAN device that was previously installed as in **Figure 4**. (If no ADTRAN device has been installed, click the **Install Modem** button and refer to KB Article # 1549.

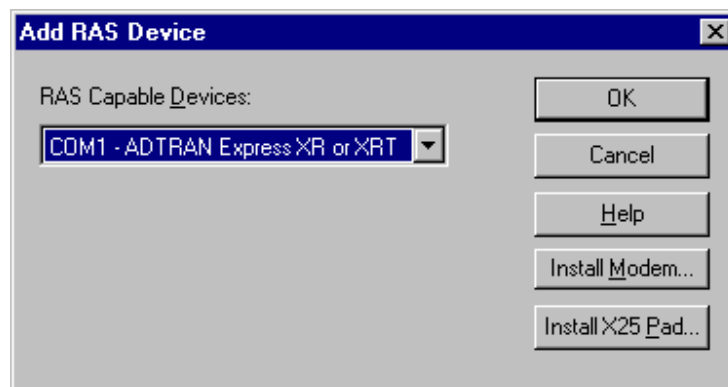


Figure 4: Choose the ADTRAN Unit Installed

8. Once the ADTRAN device is selected, click the **OK** button.
9. Click the **Continue** button as in **Figure 5**. You may have to change dialing or network parameters under **Configure** or **Network** depending on your application and network.

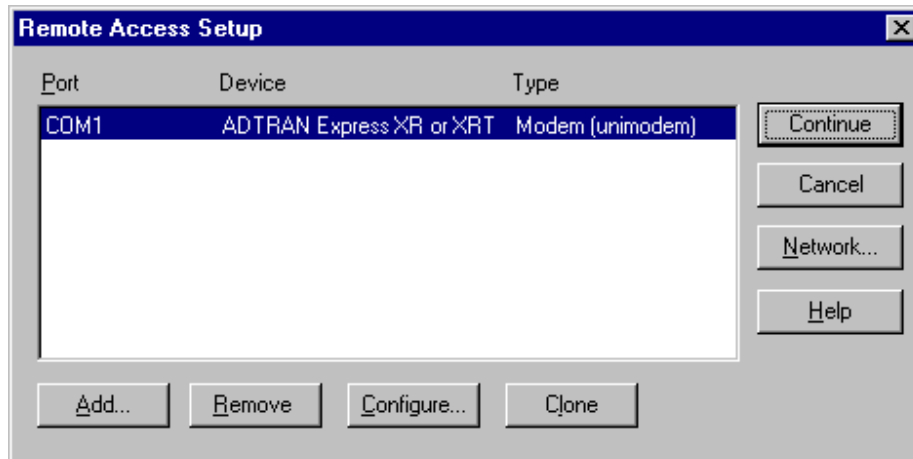


Figure 5: An ADTRAN Device set up in RAS

10. Click the **Close** button to exit the Network properties.
11. After saving your Network settings you may be asked to restart your computer. Click the **Yes** button (see **Figure 6**).

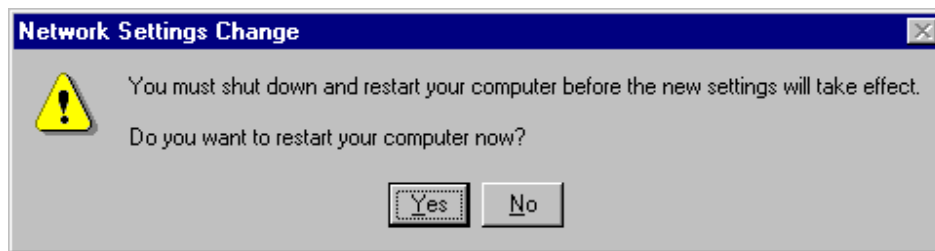


Figure 6: Restart Your Computer

After you reboot your computer, your ADTRAN ISU device should now be installed and configured in Windows NT 4.0 RAS.

*Windows NT and Microsoft are registered trademarks of Microsoft Corporation*