



Adding ADTRAN ISDN Products to Open Transport for Apple Macintosh®

Introduction

This document was designed to assist in setting up ADTRAN ISU® products with Open Transport software for Macintosh systems.

- It is assumed that your ADTRAN unit has SPID and ISDN phone numbers or that Local Directory Numbers (LDNs) have been correctly entered into the unit.
- It is assumed that you already have Open Transport installed on your Macintosh.

Initial Setup

Although the initial setup of ADTRAN units is not covered in this Technical Support Note, the following settings are required:

- Set Dial Options to AT commands (applies to ISU Express, 2x64, or ISU 128®).
- Select RS-232 as Connector Type (applies to ISU Express, 2x64, or ISU 128®).
- Select V.35 operation on older ISU 128 units - part number 1200029 (see Cable Requirements).
- Set DTE Bit Rate = 57.6k or 115.2k (Set DIP switch 1 up on the Express XR/XRT or 3000 when using 230.4k).

Initial Setup

1. Go to the **System Folder** in the **Control Panels** folder and open the **TCP/IP** control panel. See Figure 1.

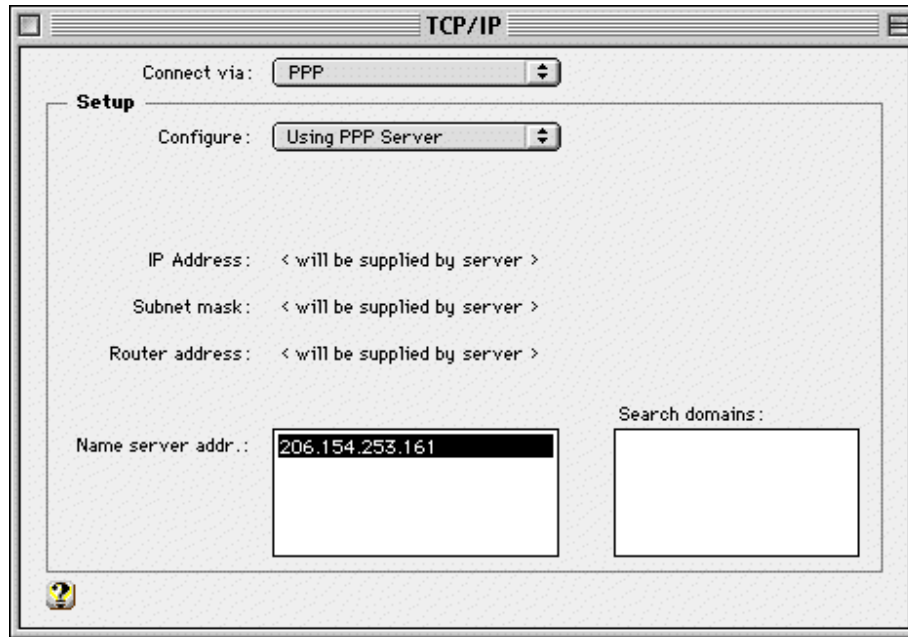


Figure 1

2. Set **Connect via:** to **PPP**.
3. Set **Configure:** to **Using PPP Server**.
4. Enter the two **Name Server addr.:** and the **Search domains:** provided by your ISP.
5. Close the **TCP/IP** control panel and save the changes when prompted.
6. Open the **Modem** control panel.
 - a. Select the port your modem is attached to (usually the **Modem Port**).
 - b. Select the appropriate ADTRAN option from the **Modem:** list.
 - c. Close the **Modem** control panel and save the changes when prompted.

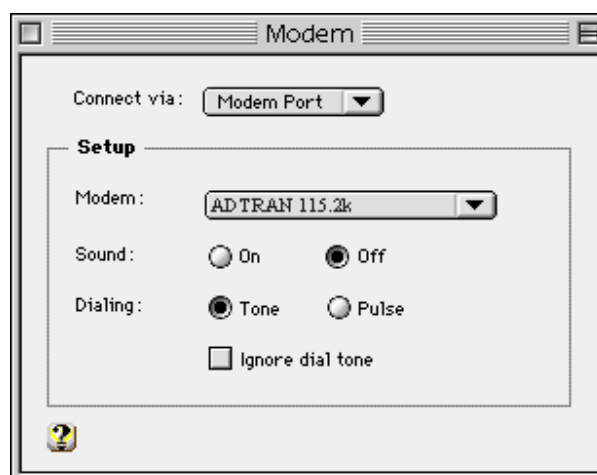


Figure 2

If the ADTRAN device is not an option under modems, the required CCL scripts need to be setup. These scripts set up an initialization string for the modem according to the script you have selected. It is necessary to have the correct CCL scripts for the ADTRAN Express XR/XRT/3000. Please see kb article 1545 for more information.

Configuration of Open Transport

1. Open the **PPP** control panel. See Figure 3.
 - a. Make sure the **Registered User** radio button is selected.
 - b. Enter your user name and password in the **Name** and **Password** fields.
 - c. Checking the **Save Password** box eliminates the need to type your password every time you connect to your ISP.
 - d. Enter the dial up number for your Internet service provider in the **Number** box.

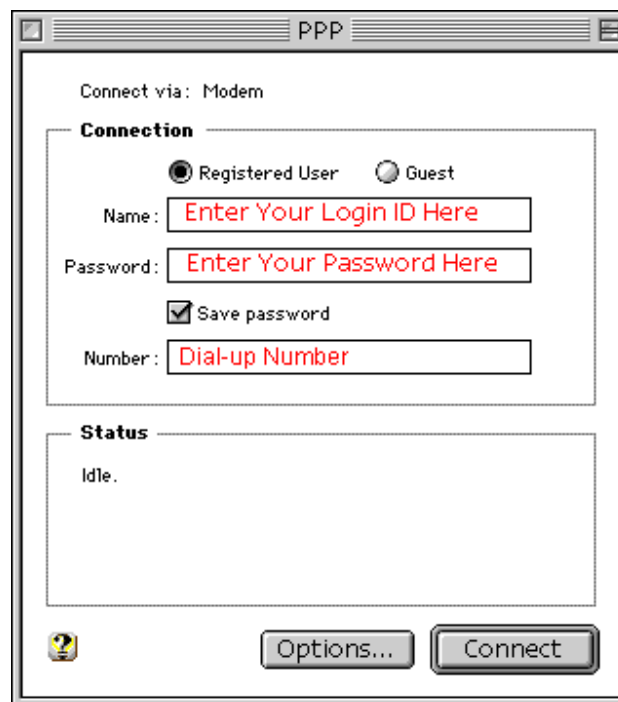


Figure 3

At this point clicking the **Connect** button at the bottom of the control panel will cause you to connect.

For additional AT commands and S-registers see your manual.

TIP: If you are using Multilink PPP and cannot connect to the remote site, try using a single-link PPP connection. If you are still unsuccessful, use the Express Configuration Wizard or S-registers to change your call type to **Data 56k**. Also, if you are dialing long distance try using a different long distance carrier code (i.e. 1010333, 1010222, or 1010288) before the actual number to be called (i.e. 101022212055551212). For additional assistance look at your Status Buffer Messages on the unit. A brief description of these messages is supplied in the manual.

Cable Requirements

Care must be taken to select the proper cable when using high-speed communications devices with your Macintosh computer. When connecting to an ADTRAN ISU Express, Express XR/XRT/3000 or ISU 2x64 unit, a Macintosh high-speed EIA-232 cable must be used (defined below). When connecting to an ISU 128 unit, a special mini-DIN-to-V.35 cable is required.

Following are cable diagrams recommended by Apple and ADTRAN for Macintosh-to-RS232 (Table 1) and Macintosh-to-V.35 (Table 2) connectivity. These cables are generally available where Apple products are sold. The Macintosh-to-V.35 cable is available through Belkin Electronics (800-223-5546), Belkin part number A3M922-08.

MAC DIN-8	EIA-232 DB-25P (MALE)
1 (HSK0)	4, 20 (RTS, DTR)*
2 (HSK1)	5 (CTS)**
3 (TxD-)	2 (TD)
4 (SG)	7 (SG)
5 (RxD-)	3 (RD)
6 (TxD+)	not connected
7 (GP1)	8 (DCD)
8 (RxD+)	7 (SG)

Table 1

*RTS must be asserted. This may be done by connecting RTS to DTR or by connecting RTS to DSR on the DB-25. Do not connect to both DSR and DTR!

** Normally pin 2 (CTS) is connected to pin 6 (DSR) on other Macintosh cables.

MAC DIN-8	V. 35 PIN Connections (MALE)
1 (HSKO)	H (DTR)
2 (HSK1)	D (CTS)
3 (TxD-)	P (TD-A)
4 (SG)	B, A (GND)
5 (RxD-)	R (RD-A)
6 (TxD+)	S (TD-B)
7 (GP1)	F (DCD)
8 (RxD+)	T (RD-B)
-	C-> E (RTS -> DSR)

Table 2

If you experience any problems using your ADTRAN product, please contact ADTRAN Technical Support.