

# TRACER

## Wireless 2xE1

### Product Features

- Digital microwave radio
- Dual E1 interface
- Direct sequence spread spectrum
- Two frequency bands: 2.4 to 2.4835 GHz or 5.725 to 5.850 GHz
- No license required in many countries
- Frequency agile
- Remote loopback
- Remote control of far end
- Rack- or mastmounted RFC option
- 1U (4.4 cm), 48.3 cm (19" EIA) rack space using mastmounted RFC
- Point-to-point, up to 48 km

The ADTRAN TRACER is a digital microwave radio that uses spread-spectrum technology to provide E1 communication links. TRACER operates in the 2.4 - 2.4835 GHz or 5.725 - 5.850 GHz band and is unlicensed in many countries.

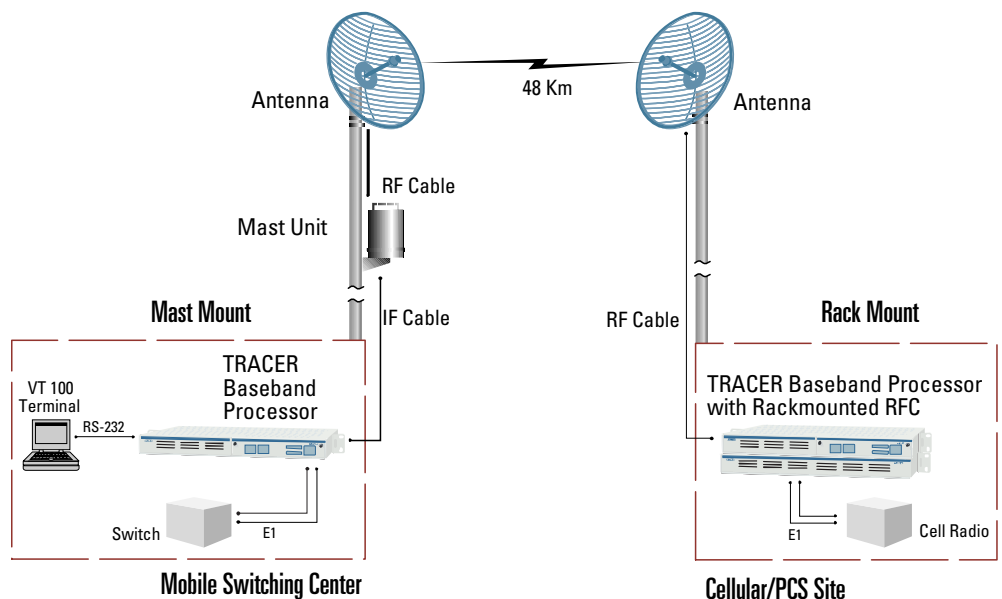
TRACER is composed of two primary components; a baseband processor and a radio-frequency converter (RFC). To minimize transmission line loss, the RFC may be mastmounted up to 100 meters from the baseband processor using a single RG-8 size coaxial cable. Alternatively, the RFC may be rackmounted as an option for installations using low-loss coaxial connections to the antenna. All signaling and power functions between the baseband processor and RFC are provided over a single coaxial connection.

TRACER transports two E1 digital signals in either HDB3 or AMI coding formats and provides either 75Ω BNC or 120Ω DB-15/

RJ-48 interfaces. A separate maintenance channel is embedded in the TRACER data stream, providing remote configuration and monitoring functions. The maintenance channel is provided without impacting the E1 capacity.

TRACER is suitable for installations where wireless voice or data communication is a cost-effective alternative to traditional wireline connections in point-to-point, line-of-sight applications. For example, TRACER is ideal in deployment situations involving land preservation, difficult-to-navigate terrain, disaster recovery, and other scenarios where laying cable is unmanageable, too costly, or temporary.

By using the latest technology and incorporating ADTRAN's ISO 9001 manufacturing processes, ADTRAN has designed TRACER to provide the highest levels of reliability and durability.



## Wireless 2xE1

### Product Specifications

#### Transmitter

##### 2.4 GHz

- **Output Power:** +20 dBm, Max
- **Frequency Band:** 2.4 to 2.4835 GHz
- **Channel Bandwidth:** 40 MHz
- **Intermediate Frequency:** 140 MHz

##### 5.8 GHz

- **Output Power:** +20 dBm, Max
- **Frequency Band:** 5.725 to 5.850 GHz
- **Channel Bandwidth:** 40 MHz
- **Intermediate Frequency:** 140 MHz

#### Receiver

##### 2.4 GHz

- **Receive Level Threshold:** -87 dBm (10-6 BER)
- **Receive Level, Max:** -30 dBm
- **Receive Level, Nominal:** -60 dBm
- **Frequency Range:** 2.4 to 2.4835 GHz
- **Channel Bandwidth:** 40 MHz
- **Intermediate Frequency:** 70 MHz

##### 5.8 GHz

- **Receive Level Threshold:** -85 dBm (10-6 BER)
- **Receive Level, Max:** -30 dBm
- **Receive Level, Nominal:** -60 dBm
- **Frequency Range:** 5.725 to 5.850 GHz
- **Channel Bandwidth:** 40 MHz
- **Intermediate Frequency:** 70 MHz

#### Frequency Plan

##### 2.4 GHz

- A - TX 2.422 GHzRX 2.462 GHz
- B - TX 2.462 GHzRX 2.422 GHz

##### 5.8 GHz

- A - TX 5.747 GHzRX 5.827 GHz
- B - TX 5.827 GHzRX 5.747 GHz

#### Baseband Processor

- **Operating Temperature:** -25° to 65° C
- **Width:** 42.4 cm, (for 19" EIA rack mounting)
- **Height:** 1U (4.4 cm)
- **Depth:** 29.2 cm
- **Humidity:** 95%, non-condensing
- **Weight:** 2.7 kg

#### Rackmounted RFC

- **Operating Temperature:** -40° to 65° C
- **Width:** 42.4 cm, (for 19" EIA rack mounting)
- **Height:** 1U (4.4 cm)
- **Depth:** 29.2 cm
- **Humidity:** 95%, non-condensing
- **Weight:** 4.8 kg

#### Mastmounted RFC

- **Operating Temp:** -40° to 65° C
- **Diameter:** 22.5 cm
- **Height:** 52.5 cm
- **Humidity:** 100%
- **Weight:** 8.1 kg

#### Power

- **Input Voltage:** 21 to 60 vDC  
(either polarity referenced to ground)
- **Power Consumption:** 30 watts  
(amperage=30 watts/voltage)
- **DC Connector:** 3-pin screw clamp
- **AC Adapter Connector:** 3-pin DIN



2xE1 Baseband Processor

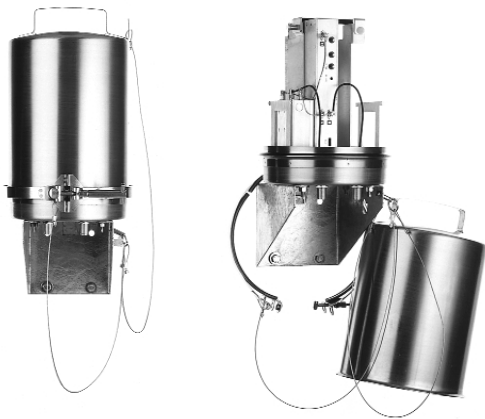


Rackmounted RFC

# Ordering Information

Equipment	2.4 GHz Part #
<b>Mast-mounted</b>	
2xE1, 75 $\Omega$ , Freq Plan A	4280TRACERE1L5-A
2xE1, 75 $\Omega$ , Freq Plan B	4280TRACERE1L5-B
2xE1, 120 $\Omega$ , Freq Plan A	4280TRACERE1L7-A
2xE1, 120 $\Omega$ , Freq Plan B	4280TRACERE1L7-B
<b>Rack-mounted</b>	
2xE1, 75 $\Omega$ , Freq Plan A	4280TRACERE1L6-A
2xE1, 75 $\Omega$ , Freq Plan B	4280TRACERE1L6-B
2xE1, 120 $\Omega$ , Freq Plan A	4280TRACERE1L8-A
2xE1, 120 $\Omega$ , Freq Plan B	4280TRACERE1L8-B

Equipment	5.8 GHz Part #
<b>Mast-mounted</b>	
2xE1, 75 $\Omega$ , Freq Plan A	4280TRC582E75M1A
2xE1, 75 $\Omega$ , Freq Plan B	4280TRC582E75M1B
2xE1, 120 $\Omega$ , Freq Plan A	4280TRC582E12M1A
2xE1, 120 $\Omega$ , Freq Plan B	4280TRC582E12M1B
<b>Rack-mounted</b>	
2xE1, 75 $\Omega$ , Freq Plan A	4280TRC582E75R1A
2xE1, 75 $\Omega$ , Freq Plan B	4280TRC582E75R1B
2xE1, 120 $\Omega$ , Freq Plan A	4280TRC582E12R1A
2xE1, 120 $\Omega$ , Freq Plan B	4280TRC582E12R1B



Mastmounted RFC



AC Adapter



ADTRAN, Inc.  
Corporate Headquarters  
Attention:  
International Department  
901 Explorer Boulevard  
Huntsville, Alabama 35806  
USA  
[www.adtran.com](http://www.adtran.com)

Asia Pacific—Beijing, China  
+86 10 8857-6415 voice  
+86 10 8857-6417 fax  
[sales.china@adtran.com](mailto:sales.china@adtran.com)

Asia Pacific—Hong Kong, China  
+852 2824-8283 voice  
+852 2824-8928 fax  
[sales.asia@adtran.com](mailto:sales.asia@adtran.com)

Asia Pacific—Guangzhou, China  
+86 20 8384-6015 voice  
+86 20 8384-7127 fax  
[sales.china@adtran.com](mailto:sales.china@adtran.com)

Asia Pacific—Melbourne,  
Australia  
+61 3-9658-0500 voice  
+61 3-9658-0599 fax  
[sales.australia@adtran.com](mailto:sales.australia@adtran.com)

European/Middle East/Africa—  
Bad Homburg, Germany  
+49 6172-483-2304 voice  
Germany  
+1 256-963-8695 voice  
Alabama, USA  
+49 6172-483-2305 fax  
Germany  
[sales.europe@adtran.com](mailto:sales.europe@adtran.com)

Latin America/Caribbean  
+1 954-474-4424 voice  
Florida, USA  
+1 256-963-7551 voice  
Alabama, USA  
+1 954-474-1298 fax  
Florida, USA  
[sales.latin@adtran.com](mailto:sales.latin@adtran.com)

Mexico  
+1 954-474-4424 voice  
Florida, USA  
+1 256-963-7551 voice  
Alabama, USA  
+1 954-474-1298 fax  
Florida, USA  
[sales.mexico@adtran.com](mailto:sales.mexico@adtran.com)

U.S. Headquarters  
Huntsville, Alabama USA  
+1 256-963-8000 voice  
+1 256-963-8669 voice  
+1 256-963-6300 fax  
[international@adtran.com](mailto:international@adtran.com)



I.S. EN ISO 9001

ADTRAN is a  
ISO 9001 registered company.



TL 9000

ADTRAN is a  
TL 9000 registered company.

I-64280TRACERE1L5-8F August 2003  
Copyright © 2003 ADTRAN, Inc.  
All rights reserved.

Specifications subject to change without notice. ADTRAN is a trademark of ADTRAN, Inc. and/or its affiliates in the U.S. and certain other countries. TRACER is a registered trademark of ADTRAN, Inc. in the U.S. All other trademarks mentioned in this document are the property of their respective owners.